

LIYC Members Discover Echoes of Lido Along the Rhine

A large group of LIYC Members and Lido residents made the trip to Europe for a seven night cruise beginning in Amsterdam and going up the Rhine River to view the castles along its banks and hear about their history.

Many of us took advantage of the central European location of both Amsterdam and Basel, Switzerland to plan pre-trips and post-trips to at least six different countries besides the ones we visited on the cruise.

From beaches to street signs, reminders of Lido and its streets were seen everywhere along the trip.

Those of us who came a couple of days early started off visiting the sights around Amsterdam. Whether it was a bike tour around the city, a trip to the Heineken Museum or taking a bus to a quaint little village where we saw the cheese making process, traditional wooden shoes being crafted and windmills still being used as saw mills and grain mills and of course a boat tour on the canals that ring the old city center. Many of us also toured the house and tiny attic space in Amsterdam where Anne Frank along with her family and another family were hidden from the Nazi's during WWII.

On the first day of our actual cruise, our ship had to traverse a few locks to reach the Rhine.

At dinner each night a portion of our group attended the Chef's table meal that included 6 unique courses over the evening. Following our evening meal, many of us went into the lounge for entertainment and drinks. On a couple of those evenings LIYC member John Giannone was able to accompany the pianist and rocked the house with his incredible style playing the piano. When John started playing the energy in the room went through the roof and not just from the Lido contingent, everyone on board joined in whether singing or dancing. Even some crew members joined in and began dancing along as well.

Further up the Rhine we all enjoyed activities in each of the cities we stopped at, such as touring an old castle and seeing some amazing cathedrals. Some of us did bicycle tours while others enjoyed walking tours when it was not raining. In Rudesheim we had a wine tasting, then rode in a Gondola up a mountain to see a memorial statue and enjoy the view of the town and Rhine River below.

Continue reading on page 6



Paige & Jenna Roman



David Rhodes & Marion Smith

Commodore Mike & Julie Bullock &
SC Quentin & HSC Barbara Wall

INSIDE THIS ISSUE:

Town Hall Meeting: Marine Facilities	2
Save the Dates: Holiday Events on Lido	3
History of our Lido Isle Clubhouse	5
LITPC Party of Parties – Sunset Saloon.....	13



2025-2026 BOARD OF DIRECTORS:

Alastair Fraser - *President*
acsfraser@yahoo.com
Administrative, City Relations, Communication,
Finance, Marine, Security, Men's Club

Bill Kroener - *Vice President*
kroener.william@gmail.com
Administrative, Communication, Finance, MCIC,
CC&Rs, Men's Club

Camille Rizko - *Treasurer*
camille@rizkocircle.com
Finance, Administrative, Architectural Liaison,
Marine, CC&Rs

Ronda Clark - *Secretary*
rondaclark09@gmail.com
Administrative, Clubhouse, Finance, Landscape

Joyce Boghosian - *Director*
jaboghossian@gmail.com
Landscape, Women's Club, Tennis Club

Sid Crossley - *Director*
sidcrossley@gmail.com
Clubhouse, Marine Facilities, Yacht Club Liaison,
Security, MCIC, ARC, CC&Rs

Catherine O'Hara - *Director*
cbc.ohara@gmail.com
Islander Editor, City Relations, Communications

Jeff Pence - *Director*
jjeffpence@gmail.com
Marine Facilities, Clubhouse, City Relations

Alan Schneider - *Director*
alsmd@att.net
Security

GRANDMANORS:

George Ross, *General Manager*
Rosa Garcia, *Residential Services Coordinator*
Dana Ramirez, *Architectural & Compliance Coordinator*

To contact the Management Office, email:
lidoisle@ciramail.com

SECURITY BY CITIGUARD PATROL:
(949) 991-8473

ISLANDER':

Catherine O'Hara, *Editor*
Jon Flagg, *LITPC*
Diana Miner, *LIYC*
Ken Wirgler, *LIMC*
Claudia Moorehead & Leslie Thompson, *LIWC*
Tiffany Hicks, *Cornerstone Graphic Design*
OCDM Direct Marketing *Printing/Mailing*

OFFICERS - LIDO ISLE CLUBS:

Linda Yardumian, *LITPC President*
Ken Wirgler, *LIMC*
Claudia Moorehead & Leslie Thompson,
LIWC Co-Presidents
Mike Bullock, *LIYC Commodore*

Rate sheets for advertising by local businesses and services of interest to Lido Isle residents are available at the Clubhouse 949.673.6170. Deadline for materials is the 12th of the month prior to publication on a space available basis.

As an island paper for island residents, the Lido Islander is always open for new features of special interest to Lido Isle residents. Articles, photos and artwork concerning island community activities and events, island personalities, history and nostalgia are welcome. Material submitted for publication should be in by the 12th of the month preceding publication. Letters for the Lido Islander on issues of interest to island residents may be submitted to the LICA office for publication. Brevity, clarity and propriety of subject matter will be appreciated. Anonymous letters will not be published.

Lido Islander® is a registered trademark of the Lido Isle Community Association
© 2017 Lido Isle Community Association

LICA OFFICE HOURS:

Monday - Saturday 8:00am - 5:00pm

For non-emergencies on LICA property, call Citiguard Security Patrol on-duty officer directly at (949) 991-8473 for immediate assistance. Citiguard general dispatch is (800) 673-6170. For a Critical Emergency at any hour, requiring police, fire or paramedic response, CALL 911.

LICA Notes

VIEW FROM THE BOARDROOM

LICA Marine Facilities

*Anchored in Transparency:
Lido Isle's Marine Facilities Move
Forward with Marine Advisory Working Group*



Catherine O'Hara
LICA Board Director

Lido Isle's marine facilities– the 29 wet slips, 283 dry storage spaces and 45 on-shore moorings available for rent by resident property owners and its shared launching hoists, ramps and docks– make it a truly exceptional and unique place to live. You will not find these features in any other California community.

LICA owns the physical marine facilities and is responsible for their management, maintenance and repair but it leases the historic tidelands on which they sit via a 25-year agreement with the City. The City doesn't own the land either but is a landlord on behalf of the California State Lands Commission which holds it in public trust. Public trust land may be leased to private parties (LICA) for approved uses such as marinas. However, the land and its revenue cannot be given away as a "gift of public funds." The City's requirement that LICA charge "Fair Market" rent for vessel storage is a direct edict from the state.

The existing City/LICA lease was set to expire last April but was extended for a year. It is anticipated that the City will provide a new lease for review by the Board before the end of 2025. Because it is such a long-term commitment with potential financial and legal liability for LICA, the Board will hold a Town Hall to present the new draft lease to the community before final execution. Appropriate meeting notice will be provided to ensure that all who wish to attend are aware.

Over the past year, as the Board prepared to address the new lease from the City, it undertook a review of its own Wet and Dry Storage Lease Agreement that was last updated in 2017. Around the same time, LICA was sued by heirs of a deceased Lido property owner who were asserting "vested" rights among other things to continue to keep a "family" boat at a rented wet slip at the Antibes Marina in violation of the LICA Wet and Dry Storage Lease Agreement and Directive 11. LICA and its attorneys strongly disagreed with the arguments advanced by the heirs in their lawsuit and has prevailed to date on various motions and on appeal. LICA expects that the lawsuit will be finally dismissed soon. The lawsuit has cost LICA a \$10,000 insurance deductible thus far.

Notwithstanding LICA's early success in the lawsuit, the Board deemed it prudent and appropriate to eliminate any alleged inconsistencies in its 2017 Wet and Dry Storage Lease Agreement. With the assistance of an experienced maritime attorney, a new LICA Wet and Dry Wharfage Agreement was drafted, circulated for a 28-day community review and comment period and formally adopted by the Board on March 19, 2025, after considering community input. The final version included the three revisions requested by wet slip renters.

The new Wharfage Agreement will be applied to all current and future vessel storage renters starting January 1, 2026. However, some residents and current slip renters still have questions and concerns. In response to specific requests made by some residents at LICA's October 8, 2025, Board meeting and in the interest of maximum transparency and collaboration, the Board has formed a Marine Advisory Working Group and will hold a **Town Hall Meeting on November 5 at 6:00 pm** in the Bay Room of the LICA Clubhouse to provide further clarity on the new agreement and Directive 11 update.

All LICA members and Lido residents are invited and encouraged to attend the meeting.

Copies of the new Wharfage Agreement and updated Directive 11 can be found on the LICA member portal at lidoisle.org where they can be reviewed online or downloaded and printed. Residents can also request copies from LICA's onsite management team.

Note from the editor: LICA Board Members have been invited to contribute a monthly article - A View from the Board Room - on a rotating basis. Any opinions expressed in these articles are those of the author's.



LICA Holiday Office Hours:

Wednesday, 11/26 LICA office closes at 3:00 pm
Thursday, 11/27 Office closed for Thanksgiving
Friday, 11/28 Office open for regular hours

LICA Invites All Residents to a TOWN HALL MEETING

Nov. 5th at 6:00pm
LICA Clubhouse Bay Room

Be Informed About
LIDO ISLE MARINE FACILITIES

**SHARED COMMON DOCKS &
LAUNCHING FACILITIES**

WHAT YOU CAN RENT

On Shore Moorings

Wet Slips & Side Ties

Dry Storage Spaces

RENTAL RATES & WAIT LISTS

UPDATES TO RULES AND REGULATIONS

WHERE ARE YOU ON THE BOAT STORAGE WAIT LIST?

Directive 11 Requires LICA to publish
and make available for review

Scan this QR code to access the
LICA Wharfage Wait Lists



— NEW NEIGHBORS —

HJM Associates LLC - 215 Via Ravenna
Craig Holt - 111 Via Koron

Welcome to Lido!

LIDO ISLE COMMUNITY ASSOCIATION

November 2025 CALENDAR OF EVENTS

3	Monday	Security Committee Boardroom	11:00am-Noon
		LICA Architectural Meeting Bay Room	4-6pm
5	Wed	LIWC Book Group Meeting Garden Room	1-2pm
10	Tuesday	Finance Committee Mthg Boardroom	3:30pm -4:30pm
12	Wed	Monthly LICA Board Meeting Bay Room	6-9pm
13	Thursday	LITC Monthly Meeting Boardroom	8-9am
14	Friday	Marine Committee Boardroom	9:00am-10:30am
17	Monday	LICA Architectural Meeting Bay Room	4-6pm
19	Wed	LIYC Monthly Board Meeting Boardroom	6-8pm
Mon & Wed		LIWC Yoga Bay Room, Clubhouse	10:00-11:00am
Tues & Thurs		LIWC Pilates Bay Room, Clubhouse	10:30-11:30am

*Note: Dates & times are subject to change.
All recurring events are posted on specific club pages.*

IT'S A
Wonderful Life
ON LIDO

You are invited to Lido Isle's
28TH ANNIVERSARY OF THE
Grand Tree Lighting

Wednesday, December 3rd
6:00pm

Genoa and Via Lido Soud
(across from Genoa West Boat Storage)

Music, Cookies & Hot Chocolate, and Santa!

Newport Beach Fire Department Appearance
(unless the Fire Department is called away to an emergency)

Toys for Tots Collection
Collection will begin November 1 at the LICA office.
Toys should be unwrapped and still in packages.

At Home on Lido
by Catherine Coberly

Gathering Together

As the days get shorter, the cooler weather and clouds appear, and the occasional rain ushers in a new season, anticipation of the coming holidays has us especially focused on the rituals that lead us to sharing a meal around the table. We tend to make a production out of gathering, but real connection doesn't require ceremony. A shared meal, however ordinary, gives shape to our days and strengthens the ties that sustain us far beyond the year-end festivities.

We know that sharing regular, intentional meals nurtures connection, conversation, and well-being in ways that last far beyond leftovers, but life gets busy and sometimes we forget why that extra effort might just deserve our attention all year long. Did you know that eating meals with others is associated with better diet and mental well-being overall*? The benefits aren't limited to dinnertime; it turns out that taking a few minutes every day to turn off screens and genuinely connect with family or friends over food at any time of day can improve the physical and mental health of all who are gathered around the table.

Even a table set for two can make a difference. Extending an invitation to a neighbor can foster a sense of community that will last long after the plates are cleared and the glasses put away. It doesn't have to be elaborate – an hour or two spent in good company, trading stories or laughter, can bring genuine warmth to an ordinary evening and truly lift our spirits.

As we move into the busy months ahead, it's worth remembering that gathering doesn't need a holiday or special occasion. Sometimes the most ordinary (or even last-minute) get togethers create memories and connection that last well beyond the season, reminding us that what truly matters is available to us around the table all year long.

Here's to the little moments and a very Happy Thanksgiving!

*parents.com

Lido Isle Community Association
Boat Parade Event
at the Clubhouse
Thursday, December 18th, 2025

5:30pm - 8:30pm

Hot Cocoa
& Desserts

To purchase tickets,
scan the QR code with
your phone camera

\$20.00 Per Person
RSVP no later than
December 15th, 2025
NO REFUNDS

CELEBRATE THE
HOLIDAY SEASON
Lido Style

SUNDAY
DEC 7TH!

WIN!!
MOST FESTIVE
GOLF CART!!!

6TH ANNUAL
GOLF CART PARADE

LINE UP: 5 PM CANDY CANE LANE
(938 VIA LIDO SOUD)

CRUISE THE ISLAND & LIDO VILLAGE


END @ CLUBHOUSE PATIO FOR HOT
COCOA AND COOKIES

SEND US YOUR
HALLOWEEN
COSTUME PHOTOS
BY NOVEMBER 12TH
TO PUBLISH IN THE ISLANDER

Email to:
islander@lidoisle.org
Please include your
names and a caption

Send us your photos
from the
*Holiday
Tree Lighting*
By November 12th
to publish in the Islander

Email to: islander@lidoisle.org
Please include your names and a caption



For Thanksgiving Day *and Every Day*

Practicing gratitude holds numerous benefits. It can rewire your brain for happiness, boost mental and spiritual energies, decrease stress, and improve emotional and physical healing. Taking time to appreciate the good in your life, even amid trials, can shift your perspective from wanting to abundance and bring more goodness into your reality.

1. Go on a walk with family
2. Call a family member
3. Donate items you no longer need
4. Write down 5 things for which you are grateful
5. Pay a compliment to each family member

6. Create a gratitude jar for year-round use
7. Go out and appreciate nature
8. Give a hug to someone you love
9. Smile as often as possible today
10. Children can draw a picture for a family member or friend




ADVANCED
REAL ESTATE

XFUND


HOME-TO-INCOME PROGRAM

Save the Taxes on the Sale of your Lido Island House!


Contact Wendy Webb
Today!



wendy@wendywebb.com



(949) 723 - 1470



www.advancedrealestate.com

CA Lic #00768867



Important Update: FinCEN Delays Real Estate Reporting Rule Until March 1, 2026

The U.S. Department of the Treasury’s Financial Crimes Enforcement Network (FinCEN) has announced a postponement of the Anti-Money Laundering Regulations for Residential Real Estate Transfers Rule (RRE Rule) until March 1, 2026.

Initially scheduled to take effect in December, 2025, the rule seeks to increase transparency in residential real estate transactions and help prevent illicit financial activity.

To implement this extension, FinCEN issued a temporary order granting exemptive relief from the reporting requirements. In the interim, any Real Estate Geographic Targeting Orders will remain in effect.

What This Means for Real Estate Professionals and Clients:

- No new federal reporting obligations for residential cash transactions until March 2026.
- Ongoing compliance under existing GTOs still applies.
- The delay gives the industry time to prepare for future requirements.

More information will follow as updates become available. I’m committed to keeping you informed of changes affecting residential real estate.

Contact me for more info or personalized guidance.



Janine Stratton | DRE# 02135122
(949) 214-7489
Janine@StrattonEstates.com
www.StrattonEstates.com

Your Realtor — Elegant in Style, Exceptional in Service, Driven by Results.



THE BEST Fall Chili



Ingredients:
1 Tbsp olive oil. 1 large onion, diced. 5 garlic cloves, minced. 2 poblano peppers, diced. 1 serrano or jalapeño , minced. Kosher salt and black pepper. 1 ¾ lbs. 80/20 ground beef. 2 Tbsp chili powder. 1 Tbsp smoked paprika. 1 Tbsp cumin. 2 tsp coriander. ¼ tsp cayenne pepper, more to taste. 3 Tbsp tomato paste. 1 (12 oz) beer of choice, (Modelo is great in this!). 1cup chicken stock. 1 (28 oz) can crushed tomatoes. 1 Tbsp Worcestershire. 2 bay leaves. 1 (14.5) can black beans or kidney beans, drained and rinsed.

Ingredients:
In large pot, medium heat, add oil and heat until hot. Brown ground beef, seasoning with salt and pepper. Remove from pot and set aside. Add in onion, garlic, poblano and serrano, and season with salt and pepper. Sauté until the veggies are soft and tender. Return meat to pot, add spices, stir to combine. Stir in tomato paste and cook for about 5 minutes, until browned. Deglaze with beer and cook until beer is reduced by half. Add stock, tomatoes, Worcestershire and bay leaves. Bring mixture to a simmer and cook on low, stirring occasionally, for 1 1/2 -2 hours, until thickened and flavors have melded. Stir in beans. Taste chili and add more salt and pepper if needed. Serve with garnishes as desired.


From cafehailee.com

Old Isle

COMINGS AND GOINGS AT THE LIDO CLUBHOUSE

The Lido Isle Clubhouse is a source of endless fascination for Old Isle. The basic bones of the building are still the ones from 1928, although the building has gone through numerous remodels and redecorations. Here’s a select Old Isle tour of some of the changes in the appearance of our Clubhouse over the years.


As we have often discussed in this column, the original Clubhouse was incredibly imaginative, with a strong Moroccan/Moorish style. At the time its construction, this classic style was popular in southern California (see Palos Verdes article of a couple of months ago), and it is still a part of our vernacular (see the Irvine Spectrum for a more modern example). And of course, the original Clubhouse tower was the detail that sealed the Lido Clubhouse architectural deal.




A 1928 view of the Clubhouse from the Sherman Library, with multipurpose shed structure shown to the right. Public Domain.

The tower on the original Clubhouse was the breathtaking centerpiece of the Lido Isle development, with its winding staircase leading to lovely views of the newly built island and the bay. Architectural interest was added to the tower area as small obelisks crowned the corners of the tower viewing platform, and a nicely detailed cupola with painted zig-zag highlights added imposing height to the tower. Painted borders on some of the tower windows was an inexpensive way to add to the Moorish appeal.


Another important architectural element to the early Clubhouse, although not one that really went along with the Moorish styling, was the cabana area situated on the Clubhouse’s eastern side, along the street behind the beach. In the early days of Lido, stretching even into the 1950s, many people who owned land on Lido had not necessarily built on their land. They might come for a visit, and they needed a place to change clothes and rinse off after a day on the beach. In the early days, the cabanas were simply canvas tents. By 1934, the cabanas were permanent structures.



A closeup of the roots of the one of the Clubhouse “Tiburon trees”, possibly an elephant tree, with old cabana roofs in the background.



Early Lido Clubhouse photo showing painted and plasterwork features. Dick Whittington Collection, USC Doheny Library, 1928. Public Domain.



Clubhouse tower staircase view with original canvas cabanas in the background. Dick Whittington Collection, USC Doheny Library, 1928. Public Domain.

Another interesting Clubhouse-adjacent structure built early on was a small square building in front of the cabanas on the east side of the Clubhouse property. With the projecting “tank-like” chimney on the top of the building, it seems like it might have been a trash incinerator, popular in those days before regular garbage pickup service was widespread. A 1950’s Lido Islander article referred to the chimney of this property as resembling a small minaret, which fits in well with the original Moorish intent of the building. However, apparently this little gem of a building served time more prosaically as a lifeguard room, tool shed, snack bar as well as a place where employees of the island developers sometimes lived.

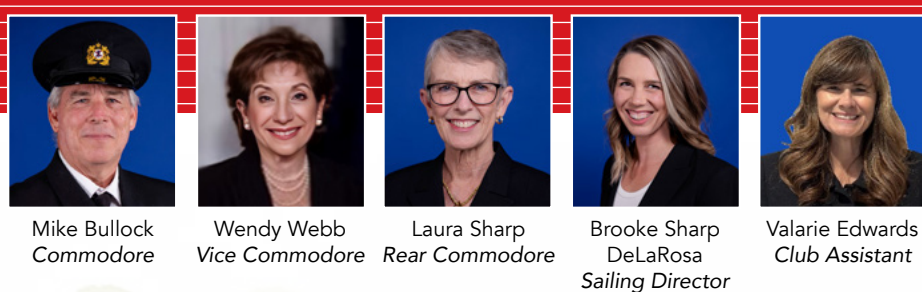
A botanical feature of the Clubhouse property, which appeared sometime after 1934, was something referred to as “Tiburon trees”. There appear to have been several trees, some seeming to block the beach view from what photos show. A little research reveals that there is a Tiburon Island in Mexico which is famous for its ecological diversity. The trees on Lido were the famous Tiburon elephant tree.

Of course, change is a constant on Lido, and early features of the original Clubhouse outlived their usefulness. There were numerous floorplan changes along the way. The original LICA offices were located in the current Board Room area. The entrance area that we now use for the Clubhouse was originally built as an apartment, presumably for a caretaker. In addition, the cabanas were torn down in 1955 as the island became a permanent home for people. Maybe not such a loss! The Clubhouse tower was torn down in 1959 as there seems to have been concern about seismic stability. The Tiburon trees made it until at least the 1960s and then disappeared into the waves of Lido Isle history. If you have any comments or memories to share, please contact Old Isle at masonlido@gmail.com.

The “Tiburon trees” bordering the beach area east of the Lido Clubhouse.

5

LIDO ISLANDER - NOVEMBER 2025



Nancy & Greg Ward



Andrea Denno, Nancy Kris & Maureen Ramer



Cruise Director, Commodore Mike Bullock, Rear Commodore Laura Sharp & Cruise Director



The AMALUCIA
Commodore Mike & Julie Bullock



Paige Roman, Sonja Gray & Jenna Roman



Marion Smith, Mike Potter, Elizabeth Clement, Kirsten Potter & John Clement



Denise Benson, SC Steve & Jan Sutherlen, Andrea Denno



Commodore Mike & Julie Bullock & Sonja Gray



Beth & Pat Lewis, SC Brian & Denise Benson, SC Dave & Pat Lamb, SC Mike & Kim Baginski



Rear Commodore Laura Sharp & Commodore Mike Bullock



Carla & Brett Anderson

LIYC Commodore's Rhine River Cruise

Continued from the front page

After arriving in Basel those of us who chose to continue were treated to stays in the Swiss cities of Lucerne and Zurich. In Lucerne, we stayed in a luxurious hotel at the top of a mountain in the Burgenstock called Wald Hotel where we had a idyllic view of a Swiss valley with the greenest pastures and cows along with a few chalets. To get to Lucerne from the hotel we would ride a funicular down the mountain to a ferry boat for a 20 minute ride across beautiful lake Lucerne to the town of Lucerne for tours and shopping.

From Lucerne, we rode a cog train to the summit of Mount Rigi, where we were greeted with several inches of snow that had turned to slush by the time we got off the train. With a view of the snow covered peaks of the alps and green pastures and a lake below the snow line, you could not help being in awe of the beauty. There were views of several waterfalls as we wound our way down from Mount Rigi to the city of Zurich.

A special Thank You goes out to Marion Smith for all of the work she did arranging this special trip. That was a lot of details to keep track of for such a large group of people. Well done Marion.

Be sure to join us next year as we cruise the Great Lakes and Niagara Falls.

Ring in the New Year with friends and neighbors at the 2025 all-Island New Year's Eve Potluck!

The ball drop will be shown on the big screen TV, Off-Island guests are also invited to join the celebration.

LIDO ISLANDERS & THEIR GUESTS ARE INVITED TO A
**BRING YOUR OWN EVERYTHING
NEW YEAR'S EVE
POTLUCK**
**6-9 PM ON 12/31
LIDO ISLE CLUBHOUSE**
RSVP: Patriciawhite2907@gmail.com by 12/26

Staff Commodore Don Benedict participated in the Sail For The Blind out of American Legion on Oct. 11. He also participated in this last year. Great work, Don!

ANNUAL HOLIDAY DUFFY CRUISE

Friday, December 12, 2025
Bahia Corinthian Yacht Club • 1601 Bayside Drive • Corona Del Mar

6:00 p.m. Rendezvous at Lido Isle Yacht Clubhouse & Holiday Lights Bay Cruise
7:45 p.m. Dinner & Dancing
\$90 Members
\$110 Non-Members
Please contact Wendy Webb
wendy@wendywebb.com

Junior Sailing Wraps Successful Summer Program

The Fall Junior Sailing Program has wrapped up and all have had a great season. The Starfish and Sea Urchins went on a field trip to the Balboa Island candy store, went sailing in a RS Quest and made some very cool artwork! The Novice/Pre-C3 group ranged from completely new sailors to those who had participated in the summer program. All made great strides in their sailing abilities. Being a small group, our Sabot Racing class got some extra attention which was great for working on individual needs. The program culminated with the annual LIYC Halloween Regatta which is always a favorite. Sailors dressed up for a fun event and we had a range of classes participate. Keep an eye out in next month's Islander for pictures. The program will start back up in the spring 2026!

LIYC will be hosting a US Sailing Level 1 course from January 17th-19th, 2026. If anyone is interested, please have them sign up on the US Sailing website or reach out to me at sailingdirector@liyc.net as soon as possible for more information!

Best,
Brooke Sharp DeLaRosa | sailingdirector@liyc.net

December 6th
Annual Meeting
10:00AM
6:30PM Change of Watch
Dinner/Dance
www.liyc.net

Home is LIDO ISLE

Having grown up on Lido, my appreciation for home and community runs deep. With my background in finance and investment advising and roots in Newport Beach and Southern California that span five generations, I am committed to helping you achieve all of your real estate goals.

Sterling Coberly

Luxury Real Estate Agent
DRE 02146070
949.244.2636
sterling.coberly@compass.com

M&A | COMPASS

Compass is a real estate broker licensed by the State of California operating under multiple licenses. License Numbers 0099628, 027275, 027276, 027277, 027278, 027279, 027280, 027281, 027282, 027283, 027284, 027285, 027286, 027287, 027288, 027289, 027290, 027291, 027292, 027293, 027294, 027295, 027296, 027297, 027298, 027299, 027300, 027301, 027302, 027303, 027304, 027305, 027306, 027307, 027308, 027309, 027310, 027311, 027312, 027313, 027314, 027315, 027316, 027317, 027318, 027319, 027320, 027321, 027322, 027323, 027324, 027325, 027326, 027327, 027328, 027329, 027330, 027331, 027332, 027333, 027334, 027335, 027336, 027337, 027338, 027339, 027340, 027341, 027342, 027343, 027344, 027345, 027346, 027347, 027348, 027349, 027350, 027351, 027352, 027353, 027354, 027355, 027356, 027357, 027358, 027359, 027360, 027361, 027362, 027363, 027364, 027365, 027366, 027367, 027368, 027369, 027370, 027371, 027372, 027373, 027374, 027375, 027376, 027377, 027378, 027379, 027380, 027381, 027382, 027383, 027384, 027385, 027386, 027387, 027388, 027389, 027390, 027391, 027392, 027393, 027394, 027395, 027396, 027397, 027398, 027399, 027400, 027401, 027402, 027403, 027404, 027405, 027406, 027407, 027408, 027409, 027410, 027411, 027412, 027413, 027414, 027415, 027416, 027417, 027418, 027419, 027420, 027421, 027422, 027423, 027424, 027425, 027426, 027427, 027428, 027429, 027430, 027431, 027432, 027433, 027434, 027435, 027436, 027437, 027438, 027439, 027440, 027441, 027442, 027443, 027444, 027445, 027446, 027447, 027448, 027449, 027450, 027451, 027452, 027453, 027454, 027455, 027456, 027457, 027458, 027459, 027460, 027461, 027462, 027463, 027464, 027465, 027466, 027467, 027468, 027469, 027470, 027471, 027472, 027473, 027474, 027475, 027476, 027477, 027478, 027479, 027480, 027481, 027482, 027483, 027484, 027485, 027486, 027487, 027488, 027489, 027490, 027491, 027492, 027493, 027494, 027495, 027496, 027497, 027498, 027499, 027500, 027501, 027502, 027503, 027504, 027505, 027506, 027507, 027508, 027509, 027510, 027511, 027512, 027513, 027514, 027515, 027516, 027517, 027518, 027519, 027520, 027521, 027522, 027523, 027524, 027525, 027526, 027527, 027528, 027529, 027530, 027531, 027532, 027533, 027534, 027535, 027536, 027537, 027538, 027539, 027540, 027541, 027542, 027543, 027544, 027545, 027546, 027547, 027548, 027549, 027550, 027551, 027552, 027553, 027554, 027555, 027556, 027557, 027558, 027559, 027560, 027561, 027562, 027563, 027564, 027565, 027566, 027567, 027568, 027569, 027570, 027571, 027572, 027573, 027574, 027575, 027576, 027577, 027578, 027579, 027580, 027581, 027582, 027583, 027584, 027585, 027586, 027587, 027588, 027589, 027590, 027591, 027592, 027593, 027594, 027595, 027596, 027597, 027598, 027599, 027600, 027601, 027602, 027603, 027604, 027605, 027606, 027607, 027608, 027609, 027610, 027611, 027612, 027613, 027614, 027615, 027616, 027617, 027618, 027619, 027620, 027621, 027622, 027623, 027624, 027625, 027626, 027627, 027628, 027629, 027630, 027631, 027632, 027633, 027634, 027635, 027636, 027637, 027638, 027639, 027640, 027641, 027642, 027643, 027644, 027645, 027646, 027647, 027648, 027649, 027650, 027651, 027652, 027653, 027654, 027655, 027656, 027657, 027658, 027659, 027660, 027661, 027662, 027663, 027664, 027665, 027666, 027667, 027668, 027669, 027670, 027671, 027672, 027673, 027674, 027675, 027676, 027677, 027678, 027679, 027680, 027681, 027682, 027683, 027684, 027685, 027686, 027687, 027688, 027689, 027690, 027691, 027692, 027693, 027694, 027695, 027696, 027697, 027698, 027699, 027700, 027701, 027702, 027703, 027704, 027705, 027706, 027707, 027708, 027709, 027710, 027711, 027712, 027713, 027714, 027715, 027716, 027717, 027718, 027719, 027720, 027721, 027722, 027723, 027724, 027725, 027726, 027727, 027728, 027729, 027730, 027731, 027732, 027733, 027734, 027735, 027736, 027737, 027738, 027739, 027740, 027741, 027742, 027743, 027744, 027745, 027746, 027747, 027748, 027749, 027750, 027751, 027752, 027753, 027754, 027755, 027756, 027757, 027758, 027759, 027760, 027761, 027762, 027763, 027764, 027765, 027766, 027767, 027768, 027769, 027770, 027771, 027772, 027773, 027774, 027775, 027776, 027777, 027778, 027779, 027780, 027781, 027782, 027783, 027784, 027785, 027786, 027787, 027788, 027789, 027790, 027791, 027792, 027793, 027794, 027795, 027796, 027797, 027798, 027799, 027800, 027801, 027802, 027803, 027804, 027805, 027806, 027807, 027808, 027809, 027810, 027811, 027812, 027813, 027814, 027815, 027816, 027817, 027818, 027819, 027820, 027821, 027822, 027823, 027824, 027825, 027826, 027827, 027828, 027829, 027830, 027831, 027832, 027833, 027834, 027835, 027836, 027837, 027838, 027839, 027840, 027841, 027842, 027843, 027844, 027845, 027846, 027847, 027848, 027849, 027850, 027851, 027852, 027853, 027854, 027855, 027856, 027857, 027858, 027859, 027860, 027861, 027862, 027863, 027864, 027865, 027866, 027867, 027868, 027869, 027870, 027871, 027872, 027873, 027874, 027875, 027876, 027877, 027878, 027879, 027880, 027881, 027882, 027883, 027884, 027885, 027886, 027887, 027888, 027889, 027890, 027891, 027892, 027893, 027894, 027895, 027896, 027897, 027898, 027899, 027900, 027901, 027902, 027903, 027904, 027905, 027906, 027907, 027908, 027909, 027910, 027911, 027912, 027913, 027914, 027915, 027916, 027917, 027918, 027919, 027920, 027921, 027922, 027923, 027924, 027925, 027926, 027927, 027928, 027929, 027930, 027931, 027932, 027933, 027934, 027935, 027936, 027937, 027938, 027939, 027940, 027941, 027942, 027943, 027944, 027945, 027946, 027947, 027948, 027949, 027950, 027951, 027952, 027953, 027954, 027955, 027956, 027957, 027958, 027959, 027960, 027961, 027962, 027963, 027964, 027965, 027966, 027967, 027968, 027969, 027970, 027971, 027972, 027973, 027974, 027975, 027976, 027977, 027978, 027979, 027980, 027981, 027982, 027983, 027984, 027985, 027986, 027987, 027988, 027989, 027990, 027991, 027992, 027993, 027994, 027995, 027996, 027997, 027998, 027999, 028000, 028001, 028002, 028003, 028004, 028005, 028006, 028007, 028008, 028009, 028010, 028011, 028012, 028013, 028014, 028015, 028016, 028017, 028018, 028019, 028020, 028021, 028022, 028023, 028024, 028025, 028026, 028027, 028028, 028029, 028030, 028031, 028032, 028033, 028034, 028035, 028036, 028037, 028038, 028039, 028040, 028041, 028042, 028043, 028044, 028045, 028046, 028047, 028048, 028049, 028050, 028051, 028052, 028053, 028054, 028055, 028056, 028057, 028058, 028059, 028060, 028061, 028062, 028063, 028064, 028065, 028066, 028067, 028068, 028069, 028070, 028071, 028072, 028073, 028074, 028075, 028076, 028077, 028078, 028079, 028080, 028081, 028082, 028083, 028084, 028085, 028086, 028087, 028088, 028089, 028090, 028091, 028092, 028093, 028094, 028095, 028096, 028097, 028098, 028099, 028100, 028101, 028102, 028103, 028104, 028105, 028106, 028107, 028108, 028109, 028110, 028111, 028112, 028113, 028114, 028115, 028116, 028117, 028118, 028119, 028120, 028121, 028122, 028123, 028124, 028125, 028126, 028127, 028128, 028129, 028130, 028131, 028132, 028133, 028134, 028135, 028136, 028137, 028138, 028139, 028140, 028141, 028142, 028143, 028144, 028145, 028146, 028147, 028148, 028149, 028150, 028151, 028152, 028153, 028154, 028155, 028156, 028157, 028158, 028159, 028160, 028161, 028162, 028163, 028164, 028165, 028166, 028167, 028168, 028169, 028170, 028171, 028172, 028173, 028174, 028175, 028176, 028177, 028178, 028179, 028180, 028181, 028182, 028183, 028184, 028185, 028186, 028187, 028188, 028189, 028190, 028191, 028192, 028193, 028194, 028195, 028196, 028197, 028198, 028199, 028200, 028201, 028202, 028203, 028204, 028205, 028206, 028207, 028208, 028209, 028210, 028211, 028212, 028213, 028214, 028215, 028216, 028217, 028218, 028219, 028220, 028221, 028222, 028223, 028224, 028225, 028226, 028227, 028228, 028229, 028230, 028231, 028232, 028233, 028234, 028235, 028236, 028237, 028238, 028239, 028240, 028241, 028242, 028243, 028244, 028245, 028246, 028247, 028248, 028249, 028250, 028251, 028252, 028253, 028254, 028255, 028256, 028257, 028258, 028259, 028260, 028261, 028262, 028263, 028264, 028265, 028266, 028267, 028268, 028269, 028270, 028271, 028272, 028273, 028274, 028275, 028276, 028277, 028278, 028279, 028280, 028281, 028282, 028283, 028284, 028285, 028286, 028287, 028288, 028289, 028290, 028291, 028292, 028293, 028294, 028295, 028296, 028297, 028298, 028299, 028300, 028301, 028302, 028303, 028304, 028305, 028306, 028307, 028308, 028309, 028310, 028311, 028312, 028313, 028314, 028315, 028316, 028317, 028318, 028319, 028320, 028321, 028322, 028323, 028324, 028325, 028326, 028327, 028328, 028329, 028330, 028331, 028332, 028333, 028334, 028335, 028336, 028337, 028338, 028339, 028340, 028341, 028342, 028343, 028344, 028345, 028346, 028347, 028348, 028349, 028350, 028351, 028352, 028353, 028354, 028355, 028356, 028357, 028358, 028359, 028360, 028361, 028362, 028363, 028364, 028365, 028366, 028367, 028368, 028369, 028370, 028371, 028372, 028373, 028374, 028375, 028376, 028377, 028378, 028379, 028380, 028381, 028382, 028383, 028384, 028385, 028386, 028387, 028388, 028389, 028390, 028391, 028392, 028393, 028394, 028395, 028396, 028397, 028398, 028399, 028400, 028401, 028402, 028403, 028404, 028405, 028406, 028407, 028408, 028409, 028410, 028411, 028412, 028413, 028414, 028415, 028416, 028417, 028418, 028



Oktoberfest Shenanigans and Fine Wine Promises

The Men's Club trades bratwurst and beer for big reds and better stemware.

by Len Davis, Official LIMC Reporter & Resident Wit

And for best costume... Mike Bullock! At the Men's Club Oktoberfest meet, Mike was in full Leiderhausen drag. Everyone else wore normal clothing. The event was coordinated by Gary Gray, as he usually does every year with catering by Ernie Rahm. Ernie prepared the traditional feast of various sausages and mustards with two competing potato salads and sauerkraut. I counted about 60 members present. A few of them even drank beer.

Thanks to the set-up crew (myself, Dave Lamb, Roger Rousset and George Turk) and the cleanup crew (Russ Butcher, Eric Henn, Jim Anderson and Rick DeForimier). Thanks to Brian Benson for provisioning us with wine, beer, sodas and even water. And also thanks to Pete Manno who brought a bottle of really good wine which spoiled us for what we had to then drink when it was gone.

The evening was fun and some of us got to follow the Dodger game once someone finally figured out how to find it on the TV. Another highlight was that our new President, Ken Wirgler, was officially ratified as our president for four more years by acclamation. See if you can wiggle out of it now, Ken! He introduced some new official members: Peter Burton, Fletcher Ewing and Bruce Gulbas. We were going to throw them into the bay for official new member christening but it was too cold and windy outside and nobody was willing to brave the elements. Maybe next month!



Ken Wirgler
LIMC President

MAG Monday, August 2024

Mike Bullock encouraged everyone to attend the Cars and Coffee event the following Saturday promising a selection of motorcycles and openly hoping for more Porsches. Hey, Mike, got something against Jaguars?

The next two events were announced: the traditional prime rib dinner in December and a wine tasting event coming up on November 10. One of Lido's most exclusive wine groups will bring some older wines from their stash and the Men's Club will also sponsor some high end wines with a purchasing budget of \$3,000. Okay, so it won't be Lafite Rothschild because you can only get about three bottles for that amount, but considering that our usual budget is around \$250 (far more than the Lido Isle Yacht Club spent last summer) this means that the wines should be pretty good. I personally promise that I will make certain that Brian makes some good choices. The Men's Club used to have decent stemware but I think they were all smashed against the fireplace during a drunken melee and now we only get plastic cups anymore. That's why I always bring my own glass and I strongly suggest that those who attend the November event do the same. Seriously, a good wine tastes better in a good wine glass. If you read my wine column in that other publication which I dare not mention in this one, you would know that.

See you all in November!

Oops, we all forgot to take pictures at our Oktoberfest event, so enjoy these throwback photos!

UPCOMING LIMC EVENTS

November 10	Fine Wine Night	Clubhouse
December 8	Prime Rib Dinner	Clubhouse

Annual Dinner, December 2024



MAG Monday, September 2024



MAG Monday, May 2025



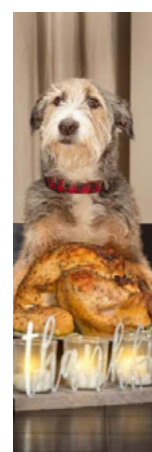
MAG Monday, April 2025



MAG Monday, January 2025



MAG Monday, October 2024



Thanksgiving Pet Safety Tips

From the American Veterinary Medical Association

- Fatty foods, bones, and sweets can harm pets—many holiday dishes are unsafe.
- **Turkey tips:** Plain, boneless, skinless turkey is okay in small amounts. Avoid gravy, sauces, dressing, fat, or skin—can cause pancreatitis or blockages.
- **Toxic foods:** Onions, raisins, grapes, and bones can poison or choke pets.
- **No desserts:** Pumpkin pie, chocolate, and anything with xylitol (sugar-free gum, baked goods) are toxic. Uncooked yeast dough can cause bloating and gas.
- **Trash safely:** Seal and secure turkey carcasses, bones, and scraps in closed containers outdoors.
- **Decor dangers:** Many festive plants (amaryllis, baby's breath, hydrangeas) and decorations (corn cobs, pine cones, gourds) can be toxic or cause choking.



— **POSTIL** —
PROPERTY MANAGEMENT

Property Management | Estate and Personal Security

949.213.9980 ppmser.com

Providing peace of mind for primary, secondary and investment/rental properties

JON FLAGG
JONFLAGG.COM

FEATURED LISTINGS



339 VIA LIDO SOUD | LIDO ISLE
4 Bed | 4 Bath | 2,865 SF | \$11,595,000



5585 E CORSO DI NAPOLI | TREASURE ISLAND
3 Bed | 4 Bath | 2,756 SF | \$6,295,000



211 VIA DIJON | NEWPORT BEACH
3 Bed | 3.5 Bath | 2,108 SF | \$4,200,000



209 NARCISSUS CORONA DEL MAR
4 Bed | 5 Bath | 2,948 SF | \$9,995,000



120 VIA TRIESTE LIDO ISLE
5 Bed | 4 Bath | 3,671 SF | \$5,850,000



3810 CHANNEL PLACE NEWPORT BEACH
3 Bed | 2.5 Bath | 1,701 SF | \$6,450,000

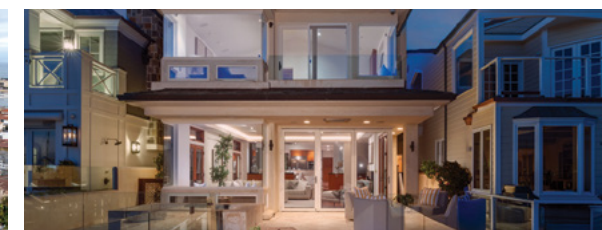


1515 ELECTRIC AVENUE SEAL BEACH
3 Bed | 3 Bath | 2,002 SF | \$2,250,000

2025 LIDO ISLE SALES



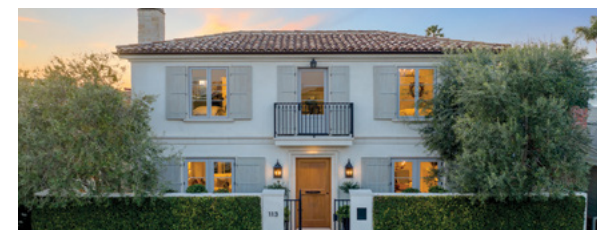
816 VIA LIDO NORD
\$17,995,000 | Represented Buyer



517 VIA LIDO SOUD
\$12,995,000 | Represented Buyer & Seller



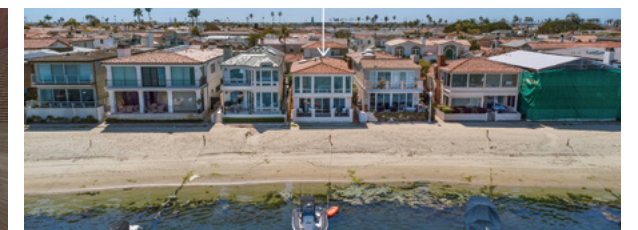
815 VIA LIDO SOUD
\$12,900,000 | Represented Seller



113 VIA SAN REMO
\$8,950,000 | Represented Seller



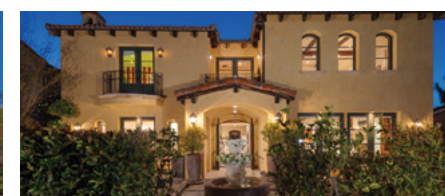
205 VIA EBOLI
\$9,299,000 | Represented Seller



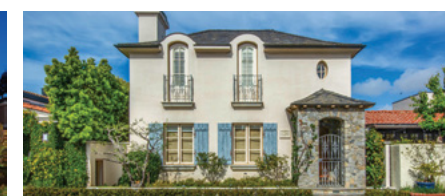
426 VIA LIDO NORD
\$8,850,000 | Represented Seller



207 VIA EBOLI
\$7,995,000 | Represented Seller



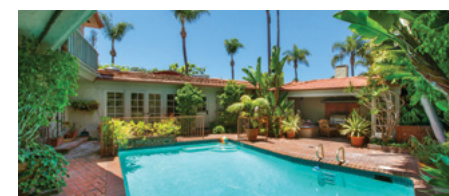
208 VIA PALERMO
\$7,995,000 | Represented Seller



129 VIA WAZIERS
\$4,795,000 | Represented Seller



109 VIA RAVENNA
\$3,995,000 | Represented Seller



200 VIA BARCELONA
Off-Market | Represented Buyer & Seller



107 VIA MENTONE
Off-Market | Represented Seller



111 VIA KORON
Off-Market | Represented Seller



215 VIA RAVENNA
Off-Market | Represented Seller

2025 ADDITIONAL AREA SALES

1732 SKYLARK LANE
Newport Beach | \$6,995,000
Represented Buyer

601 LIDO PARK DRIVE #6D
Newport Beach | \$3,995,000
Represented Buyer

2307 HOLLY LANE
Newport Beach | \$3,900,000
Represented Buyer

119 RIVO ALTO CANAL
Naples | \$3,290,000
Represented Seller

511 SANTA ANA
Newport Beach | \$2,495,000
Represented Seller

363 MONTE VISTA
Eastside Costa Mesa | \$1,999,999
Represented Seller

2008 BAJA
Newport Beach | \$1,995,000
Represented Buyer

1792 KENWOOD
Costa Mesa | \$1,925,000
Represented Buyer

291 FLOWER STREET
Eastside Costa Mesa | \$1,795,000
Represented Seller

2662 SALMON
Los Alamitos | \$1,799,000
Represented Seller

358 E YALE LOOP
Irvine | \$1,490,000
Represented Buyer

2018 ANAHEIM
Costa Mesa | \$1,280,000
Represented Buyer

10251 DELANO
Cypress | \$1,195,000
Represented Seller

4305 HILARIA
Newport Beach | \$1,195,000
Represented Buyer

1100 RUTLAND
Costa Mesa | \$775,000
Represented Seller

17697 BRITTANY LANE
Huntington Beach | \$599,999
Represented Buyer

3119 GIRBALTAR
Costa Mesa
Represented Seller

216 E 16TH PLACE #H
Newport Beach
Represented Buyer

PELICAN PLACE
Costa Mesa | Off-Market Sale
Represented Buyer



JON FLAGG
Luxury Property Specialist
949.533.7878
Jon@FlaggRealEstate.com
jonflagg.com | DRE# 01316048
@JonFlaggRealEstate

Pacific | **Sotheby's**
INTERNATIONAL REALTY

Each Office is independently owned and operated. DRE #01767484



Set Sail Into the Holidays

It's hard to believe the holiday season is here... embrace the crisp chill in the air and get ready for magical moments with friends and family!

Our welcome back Fall Social has set the tone – lively, well attended, and enjoyed by all. Members mixed and mingled, and we set sail under our new theme Grace at the Helm - reflecting the strength, warmth, and spirit of the women who have guided LIWC for 76 years.

Many thanks to Co-VP's, Sue Grant and Suzanne Cardwell for their dedication and planning of events. We have an exciting calendar this season! October 17th, Ciao Bellas featured a delicious 3-course luncheon at Il Barone Restaurant; each course was beautifully presented and narrated by Donatella, wife of Chef Franco. November 5th, enjoy the afternoon Celebrating 25 years of Design with Barclay Butera...learn his latest design tips and enjoy a VIP home tour followed by an afternoon reception.

Our fall Membership drive was a big success! Hats off to Joelle Hamontree, VP Membership, and Nancy Arnold for their hard work assembling the LIWC directory. Be on the lookout, mailbox delivery is scheduled early/mid-November.

Before things get busy, glide into the holidays – enjoy a casual lunch and fun shopping at our **"Merry & Bright" holiday boutique**. Featuring a variety of vendors, you're sure to cross names off the list... and find a treat for yourself! And a big thank you to Lee Warden & Barbara Wall, for handling all the details!

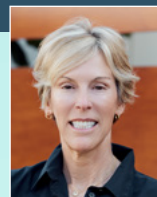
December 9th, head to the clubhouse for our **Holiday Luncheon**. A true tradition, this festive event is a favorite. Note, reservations book up quickly.

Interested in joining LIWC? New members are always welcome! Membership applications are available at the clubhouse...get ready for some fun.

We wish everyone a beautiful holiday season!



Claudia Morehead
Co-President



Leslie Thompson
Co-President



LIWC Upcoming Events

November 5	Barclay Butera – 30 Years of Design
December 4	Merry & Bright Boutique
December 9	Holiday Luncheon
February 12	Galentine's Event
March 10	Rogers Gardens – Spring Flower Workshop
April 30	Fiesta
June 4	Installation Luncheon

Special Interest Groups

Book Club	Contact: Gail Reisman
Pilates	Contact: Sharon Wright
Yoga	Contact: Jan Wirgler
Bridge	Contact: Debbie Benedict
Mahjong	Contact: Susan Crossley

Calling All Bridge Players to join Marathon & Party Bridge!



PLEASE CONTACT DEBBIE BENEDICT
FOR MORE INFORMATION
949-331-7169
BENEDICTDEB@SBCGLOBAL.NET

LIWC Looking Back...

Carol Mason - LIWC member, 20+ years Lido Isle Historian

In the 1950s, LIWC hosted an interesting event called "Reflections of Lido," which celebrated Lido Isle's links with The Lido in Venice, Italy, from which our island takes its name. The semiformal event featured handwritten scroll invitations delivered door by door



AI Enhanced Photo

The highlight of the event was the mixing of sand from the Italian Lido with sand from our own beaches, linking the two lands in perpetuity. The Italian Consul sent a representative to this unique LIWC event!



Original Photo

32 YEARS OF INTERIOR DESIGN WITH BARCLAY BUTERA



Wednesday, November 5th

\$40 MEMBER | \$45 NON-MEMBER

2pm - Meet & Greet and Presentation

701 Via Lido Sound, Newport Beach

4pm - 6pm Cocktail Reception

Barclay Butera Private Residence
700 E 15th Street, Newport Beach

Members will enjoy a meet & greet with Barclay Butera and private tour of his home with a cocktail and hors d'oeuvres reception to follow

This event is limited to 100 guests. Please RSVP by Oct. 31st and deliver check payable to LIWC to the clubhouse or Zelle at LIWCemail@gmail.com. Questions? LIWCemail@gmail.com

Member Name _____

Lido Isle Women's Club
Invites you to a

Merry & Bright

Holiday Boutique

Thursday December 4th
10:30 - 3:30 pm
Lido Isle Clubhouse

Lunch Details to Follow!

Questions? Email
LIWCemail@gmail.com

LIDO MAHJONG PLAYERS

THE CLUBHOUSE IS RESERVED EVERY
WEDNESDAY 1PM-4PM

Bring your set, drop in, and play
Mahjong with your neighbors!

BLACKMAN LTD.
Fine Jewelry and Gifts Est. 1957

3388 Via Lido Newport Beach Tel 949-673-9334
www.blackmanltd.com info@blackmanltd.com

LESLIE THOMPSON

PERSONALIZED SERVICE | PROVEN RESULTS

200 PARIS LANE | NEW LISTING
Villa Balboa | \$1,899,000 List

OFF-MARKET LISTING | IN ESCROW
Lido Isle

260 CAGNEY LANE | SOLD
Villa Balboa | \$850,000 List

105 VIA RAVENNA | LEASED
Lido Isle | \$12,500/month

OFF-MARKET | LEASED
Lido Isle | \$15,500/month

113 TOPAZ | SOLD
Balboa Island | \$6,300,000 List

LESLIE THOMPSON
949-945-8176 | leslie.thompson@compass.com
lesliethompsonhomes.com
DRE No. 01836958

Commitment | Integrity | Service
Providing exceptional results for 17 years.

COMPASS

Compass is a real estate broker licensed by the State of California and abides by Equal Housing Opportunity laws. License Number 01991628. All material presented herein is intended for informational purposes only and is compiled from sources deemed reliable but has not been verified. Changes in price, condition, sale or withdrawal may be made without notice. No statement is made as to accuracy of any description. All measurements and square footages are approximate.

Grace at the Helm

Set your sails...lead with heart, steer with strength, and embrace all adventures with grace.

LIDO ISLE TENNIS & Pickleball CLUB



Suzanne Dunlap, Julie Bullock, Robert Early, Vicky Zimmerman, Catherine & Sterling Coberly, Ed Worth

3rd Annual Oktoberfest PICKLEBALL TOURNAMENT

The 3rd Annual Pickleball Oktoberfest, hosted by Kristina Jubinville, Terri Valder, and Nancy Wimer, was a hit once again! Over thirty members gathered on the San Remo courts under sunny skies for a day of social play, laughter, and festive fun.

This year's event focused on camaraderie rather than competition—no formal tournament, just great company and friendly matches. Instead of prizes, each participant received a raffle ticket for a lively drawing, keeping the spirit light and full of surprises.

The feast, catered by Globe Deli, was a highlight: sausages, pretzel buns, potato salad, coleslaw, sauerkraut, gingerbread cake, and even "looks-like-beer" jello! The courts were decked out in festive German décor, creating the perfect Oktoberfest atmosphere. With cold drinks, brats, and big smiles, the day captured everything we love about Lido Isle—great people, good play, and plenty of island cheer!



Veronica Champion, Ed Worth, Vicky Zimmerman, Elena Ondar, Bill Kaley, Michelle St. Amour

Nancy Muth, Teri Valder, Jen Rogers, Maureen Gautschi, Barbara Wall, Carrie Tidus, Noah Tidus, Heidi, Mike Tidus, Tayler Bullock



Wyatt & Bob Early, Lilach Vrobel, Mike & Carrie Tidus, Catherine Coberly

Linda Yardumian, Jessi Zanderholm, and Nancy Arnold

Member Appreciation Event We Love Our Members!

LITPC members recently gathered on the San Remo tennis court for an evening of pickleball, tennis, games, food, and fun. The evening began with spirited rounds of pickleball—teams paired by arrival time and matches played to seven points—followed by light bites, camaraderie, and laughter.

After a few exciting rounds, members transitioned to tennis activities including "Around the World," "Pass the Racquet," and a 12-point team challenge, where winners earned Starbucks gift cards and bragging rights! This annual event was a wonderful way to show appreciation for our incredible members—fun was truly had by all!



Sterling Coberly, Coach Margie, Donna Martell, Mike Meisenbach, Catherine Coberly, George Gajewski, Linda Yardumian

Joelle Hamontree and Kirsten Ingham enjoying the end of the evening of fun

MARGIE'S CORNER



Student of the Month Callie Barss

Eleven-year-old Callie Barss is a bright new addition to our Lido Isle Junior Tennis Program! Having moved to Lido just six months ago from Newport Shores, Callie and her family of six have quickly embraced island life. A sixth grader at Newport Elementary, Callie brings energy, enthusiasm, and a smile that lights up the court.

Full of personality and always eager to learn, Callie participates in two weekly clinics and continues to make steady progress in her game. Beyond tennis, she keeps busy with Newport cheer, swimming, Junior Guards, and soccer, all while finding time to hang out with her beloved dog. Her favorite food? Sushi—and her favorite spot is Nobu!

We love having Callie as part of our LITPC family—keep up the great work and keep shining, Smiley!

Tennis Lessons on Lido LIDO ISLE TENNIS PROFESSIONAL STAFF

HEAD TENNIS PRO:

Margie Mateljan - NCAA All-American. 30+ years teaching in Newport Beach, 15 years on Lido Isle. RSPA certified and insured, CPR certified, Safe Play approved. \$115 private rate/hour, \$30-40 clinic

ASSISTANT TENNIS PROS:

Robbie Reenan - Intermountain Top Ten Player, 20+ years teaching experience in Newport Beach, RSPA insured, CPR certified, \$115 private rate/hour

Kirk Orahod - Assistant Tennis Professional - 30+ years teaching experience. Boys and Girls High School Coach, Director of Tennis Mesa Verde CC, UCI PE instructor, coach of many highly ranked players. RSPA certified and insured, CPR certified, Safe Play approved. \$115 private rate/hour

For all lesson inquiries, please contact Margie Mateljan at 949-233-5670

ANNUAL PARTY OF PARTIES at the Sunset Saloon

This is the party of the year—and it's coming up fast! Enjoy dinner, drinks, and dancing to live music by Whiskey Hayride. Space is limited, and with the Lido Islander hitting mailboxes just a week before the big night, don't wait—sign up now to secure your spot at the most popular event of the season! See the flyer below for details.

LIDO ISLE TENNIS & Pickleball CLUB PRESENTS...

SUNSET SALOON

SADDLE UP TO BE SERVED SEASIDE

NOVEMBER 7TH 6-10PM

LIDO ISLE CLUBHOUSE

DUST OFF YOUR BOOTS & GRAB YOUR HAT FOR A NIGHT OF

DINNER • DRINKS • DANCING

LIVE MUSIC BY WHISKEY HAYRIDE

SALOON DANCERS

MEMBERS \$50 • GUESTS \$65

ZELLE OR CHECKS TO LIDOISLETENNISCLUB@GMAIL.COM

Tennis Tip

The key to an effective drop shot is making it look like a normal groundstroke until the last moment. Use the same setup and swing path as you would for a regular shot—but at the last second, soften your grip and gently "slice" under the ball with an open racket face.

2026 LITPC CALENDAR OF EVENTS

The Lido Isle Tennis & Pickleball Club has an exciting year ahead with a full lineup of fun and community-filled events. Details and sign-ups will be announced soon—mark your calendars and get ready for another fantastic season on the courts!

Tentative Schedule:

February – Valentine's Pickleball Social
March – Drop-In Pickleball
May – Tennis Social
June – Member-Guest Tournament
July – Drop-In Pickleball
August – Endless Summer Tennis Social
September – Member Appreciation
October – Oktoberfest Pickleball Social
November – Annual Party

Join the Lido Isle Tennis & Pickleball Club 2026 Registration Now Open!

We're gearing up for what promises to be our best year yet in 2026, and now's the perfect time to join or renew your membership! With over 220 members and growing, the Lido Isle Tennis & Pickleball Club welcomes players of all levels who enjoy friendly competition, community connection, and great island fun.

- Annual membership: \$100
- Supports premier adult and junior tennis programs and our vibrant, fast-growing pickleball community.
- Offers spirited tournaments, engaging clinics, and festive social events throughout the year.

Let's make 2026 the best year ever for LITPC! To join or renew, email lidoisletennisclub@gmail.com and be part of the excitement that makes Lido Isle so special.

LIDO ISLE TENNIS & PICKLEBALL CLUB MEMBERSHIP APPLICATION 2026

Name(s) _____
You may include spouse or significant other in your membership

What do you play? ☐ tennis ☐ pickleball

What does your spouse/significant other play? ☐ tennis ☐ pickleball

☐ Check if New Member

☐ Check if no changes from previous year; otherwise, changes below:

Spouse/Significant Other Addition/Change _____

Child(ren) Name(s) and Age(s) (18 and under) _____

Address _____

Cell Phone(s) _____ (indicate whose)

Home Phone _____

Email(s) _____ (indicate whose)

TOTAL ANNUAL MEMBERSHIP DUES ARE \$100
CHECK PAYABLE TO LITC / DELIVER TO LIDO CLUBHOUSE
OR ZELLE TO lidoisletennisclub@gmail.com

Deadline 12.31.25 for inclusion in directory

Membership includes entire household residing on Lido

Free to members events include: Tennis & Pickleball Social Events / Membership Appreciation Night

Dues also go towards: Tennis & Pickleball Tournaments / Annual November Party / Kentucky Derby Party / Lido Jr. Tennis / NHHS Tennis

*YOU ONLY LIVE ONCE, BUT YOU GET TO SERVE TWICE
DRIVE, DROP, DINK, REPEAT*



The
McCormick
Group

RECENT SALES



500 Via Lido Nord, Lido Isle
Sold Price: \$15,000,000 / Rep. Buyer



924 Via Lido Nord, Lido Isle
List Price: \$19,750,000 / Rep. Seller



201 Via Cordova, Lido Isle
List Price: \$6,195,000 / Rep. Seller



711 Via Lido Nord, Lido Isle
Sold Price: \$5,795,000 / Rep. Buyer



65 Sea Island Drive, Newport Beach
List Price: \$1,295,000 / Rep. Seller



270 Cagney Ln #315, Newport Beach
Sold Price: \$1,090,000 / Rep. Buyer



Alison McCormick
Broker Associate / The McCormick Group

949.355.4104
amccormick@arborrealestate.com
McCormickGroupOC.com
DRE No. 00607959

