

The City is evaluating a potential aquatic complex at the Lower Castaways Park site. Photo courtesy of City of Newport Beach.



A rendering of the proposed aquatic center at Lower Castaways Park. Rendering by RJM Design Group/ Courtesy of City of Newport Beach.

MAYOR'S UPDATE

from Newport Beach Mayor Joe Stapleton

Honoring Our History, Community Pride, & Future Leaders

Greetings Lido Islanders!

As your Mayor, I'm honored to share this update with our Lido community as part of my "Celebrate Newport" theme, which honors our history, celebrates our present, and prepares for the future by engaging the next generation of leaders.

I'm especially proud of the efforts to expand youth engagement this year, giving future leaders opportunities to get involved in mentorship programs like the Mayor's Youth Council, learn about city government, and volunteer in ways that build civic pride right here at home.

Public safety is always a top priority, and we've placed a renewed focus on the Oceanfront Boardwalk. In recent months, the Newport Beach Police Department has increased patrols along the boardwalk, balancing enforcement with education. In a focused effort this spring, officers issued hundreds of citations and made thousands of educational contacts. Citations dropped significantly through the summer months, showing real progress in promoting safer conditions for residents and visitors alike.

Closer to the Lido neighborhood, the City has developed a Lower Castaways Ad Hoc Committee to explore future uses of this important historic site. Once proposed as an aquatic center, the site is now being considered for alternatives that could include a launch ramp, open space, interpretive trails, and historical and educational features that would highlight its significance as Newport Beach's birthplace. An upcoming Request for Proposals (RFP) will invite community input and potential partnerships to bring these ideas to life as we explore alternate sites for a potential public aquatic center.

Financial stewardship also remains central to our ability to maintain high quality services for our community. In June, the City Council adopted a balanced \$332 million budget for Fiscal Year 2025-26. The budget reflects strong fiscal discipline, maintains essential services, invests in infrastructure, and projects a \$12.2 million surplus. Highlights include \$40 million toward pension liability paydown and \$5 million for additional capital improvements. These investments help protect the City's AAA credit rating while ensuring long-term stability.

As my term as Mayor enters its final months, I hope you'll continue to Celebrate Newport by honoring where we've come from, taking pride in the community we've built, and inspiring the next generation to carry Newport Beach forward with vision and leadership.

INSIDE THIS ISSUE:	
LICA Election Ballot Response Needed	2
The Lido Clubhouse Design History	5
LIYC and LIMC Cars and Coffee » Oct. 18th	7
Women's Club Ciao Bellas » Oct. 17th	11



2025-2026 BOARD OF DIRECTORS:

Alastair Fraser - *President*
acsfrazer@yahoo.com
Administrative, City Relations, Communication,
Finance, Marine, Security, Men's Club

Bill Kroener - *Vice President*
kroener.william@gmail.com
Administrative, Communication, Finance, MCIC,
CC&Rs, Men's Club

Camille Rizko - *Treasurer*
camille@rizkocircle.com
Finance, Administrative, Architectural Liaison,
Marine, CC&Rs

Ronda Clark - *Secretary*
rondaclark09@gmail.com
Administrative, Clubhouse, Finance, Landscape

Joyce Boghosian - *Director*
jaboghossian@gmail.com
Landscape, Women's Club, Tennis Club

Sid Crossley - *Director*
sidcrossley@gmail.com
Clubhouse, Marine Facilities, Yacht Club Liaison,
Security, MCIC, ARC, CC&Rs

Catherine O'Hara - *Director*
cbc.ohara@gmail.com
Islander Editor, City Relations, Communications

Jeff Pence - *Director*
jjeffpence@gmail.com
Marine Facilities, Clubhouse, City Relations

Alan Schneider - *Director*
alsmd@att.net
Security

GRANDMANORS:

George Ross, *General Manager*
Rosa Garcia, *Residential Services Coordinator*
Dana Ramirez, *Architectural & Compliance Coordinator*

To contact the Management Office, email:
lidoisle@ciramail.com

SECURITY BY CITIGUARD PATROL:

(949) 991-8473

ISLANDER:

Catherine O'Hara, *Editor*
Jon Flagg, *LITPC*
Diana Miner, *LIYC*
Ken Wirgler, *LMC*
Claudia Moorehead & Leslie Thompson, *LIWC*
Tiffany Hicks, *Cornerstone Graphic Design*
OCDM Direct Marketing *Printing/Mailing*

OFFICERS - LIDO ISLE CLUBS:

Linda Yardumian, *LITPC President*
Ken Wirgler, *LMC*
Claudia Moorehead & Leslie Thompson,
LIWC Co-Presidents
Mike Bullock, *LIYC Commodore*

Rate sheets for advertising by local businesses and services of interest to Lido Isle residents are available at the Clubhouse 949.673.6170. Deadline for materials is the 12th of the month prior to publication on a space available basis.

As an island paper for island residents, the Lido Islander is always open for new features of special interest to Lido Isle residents. Articles, photos and artwork concerning island community activities and events, island personalities, history and nostalgia are welcome. Material submitted for publication should be in by the 12th of the month preceding publication. Letters for the Lido Islander on issues of interest to island residents may be submitted to the LICA office for publication. Brevity, clarity and propriety of subject matter will be appreciated. Anonymous letters will not be published.

Lido Islander® is a registered trademark of the Lido Isle Community Association
© 2017 Lido Isle Community Association

LICA OFFICE HOURS:

Monday - Saturday 8:00am - 5:00pm

For non-emergencies on LICA property, call Citiguard Security Patrol on-duty officer directly at (949) 991-8473 for immediate assistance. Citiguard general dispatch is (800) 673-6170. For a Critical Emergency at any hour, requiring police, fire or paramedic response, CALL 911.

LICA Notes

New Windscreens Coming to Lido's Tennis Courts

Great news, Lido residents! The windscreens at Barcelona, Jucar, and San Remo courts will be replaced with brand-new ones in October. This follows the August refinishing of the San Remo and Jucar court surfaces. These upgrades enhance the look and functionality of our beloved community court facilities, enabling all Lido residents to enjoy a top-notch tennis, pickle ball or basketball experience.



Unfortunately, we've seen minor vandalism at the courts recently, including pet urine and feces left on courts, offensive graffiti and evidence of burns which left gaping holes on the windscreens. These acts by a few harm our shared amenities and add significant expense to LICA's annual maintenance budget - which means all residents are impacted.



Let's work together to preserve these newly refurbished facilities for everyone's enjoyment. Please be reminded that pets, bicycles, skateboards, and roller skates are never permitted on the courts and if you see any damage or need for maintenance, please notify the onsite LICA management office.

Thank you, Lido community!

LIDO ISLE COMMUNITY ASSOCIATION

October 2025 CALENDAR OF EVENTS

2	Thu	LITC Monthly Meeting Boardroom	8:00-9:00am
6	Mon	Security Committee Boardroom	10:00-11:00am
		LICA Architectural Meeting Bay Room	4:00-6:00pm
8	Wed	Monthly LICA Board Meeting Bay Room	6:00-9:00pm
10	Fri	Marine Committee Boardroom	9:00-10:30am
15	Wed	LIWC Book Group Meeting Garden Room	7:00-9:00pm
		LIYC Monthly Board Meeting Boardroom	6:00-8:00pm
20	Mon	LICA Architectural Meeting Bay Room	4:00-6:00pm
27	Mon	LICA MCIC Meeting Boardroom	4:00-5:00pm
28	Tues	Finance Committee Meeting	3:00-4:00pm
Mon & Wed		LIWC Yoga Bay Room, Clubhouse	10:00-11:00am
Tues & Thurs		LIWC Pilates Bay Room, Clubhouse	10:30-11:30am

*Note: Dates & times are subject to change.
All recurring events are posted on specific club pages.*



DON'T FORGET TO VOTE! Ballots Have Been Mailed

Keep an eye out for the proposed CC&R amendment election ballot along with the annual audit and communication form should have arrived in your mailbox. If you did not receive your mailer, please contact the LICA management office. We ask that no matter how you intend to vote, please complete and return your postage paid ballot before the deadline.

2026 Wharfage Agreements Attention Current Wet Slip, Side-Tie and Dry Storage Renters

This is a reminder that if you intend to continue renting vessel storage space through LICA, a new Wharfage Agreement, per Directive 11, must be completed, approved by LICA and executed for 2026. If you received an application packet, please be sure to return it before the indicated deadline. If you have not yet received an application packet for renewal, please contact the LICA management office.

Thank you for your attention to this matter.



Welcome to Lido Isle New Neighbors

Bruce & Jacqueline Gulbas 711 Via Lido Nord	Gordon & Mona Jennings 218 Via Lido Nord
Everett Family 816 Via Lido Nord	Collin & Alyssa Green 113 Via Yella



LIDO LITTLES TRICK OR TREATING

Early on Halloween evening, the Lido Littles will enjoy a not-so-scary trick or treating! We will meet at San Remo Park at 5:00 for pictures. From there, at about 5:30 we will visit the following stratas- Quito/Ravenna, Trieste/Undine, Undine/Venezia, Xanthe/Yella, & Yella/Zurich, where neighbors will be waiting to pass out candy.



Questions? Email Jessi Zanderholm at Autumntrendy@icloud.com

Tennis & Pickleball Reminders

Pickleball Hours

All Tennis Courts are open for tennis play daily from 7:00 a.m. to 10:00 p.m.

The designated Jucar Pickleball/Basketball Court is open for pickleball or basketball play daily from 8:00 a.m. to 6:00 p.m. Play may not begin before 8:00 a.m. and must cease by 6:00 p.m.

Wheeled toys and bicycles are prohibited.

Only tennis shoes or other non-marking shoes are allowed on the Court. Skateboards, roller blades, skates, bicycles, scooters, etc. are prohibited. Amplified music is prohibited.

Private instruction by anyone other than the LICA Pro is allowed with restrictions.

Private instructors may instruct no more than one (1) individual at one time (no clinics); such individual must be a LICA Resident.

Private instructors must register with LICA prior to giving instruction.

Register at the onsite office in person at 701 Via Lido Soud, Newport Beach, or by email at lidoisle@ciramail.com.

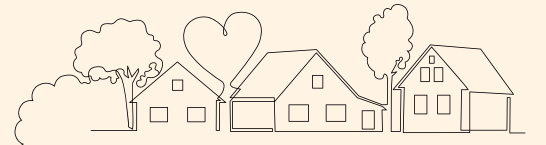
The following are required:

• Proof of professional certification as a Certified Tennis Pro.

A Certified Tennis Pro is defined as a tennis instructor who is a member of the US Professional Tennis Association (USPTA). A Certified Pickleball Pro is defined as a tennis instructor who is a member of the US Professional Tennis Association (USPTA) with additional USPTA approved pickleball certification.

• Proof on insurance.

Private instructors who wish to provide tennis, pickleball or basketball instruction on LICA Courts or facilities must provide LICA with a certificate of general liability insurance with a minimum \$1,000,000 in policy coverage. The policy shall name "Lido Isle Community Association, 701 Via Lido Soud, Newport Beach, CA 92663" as an additional insured and certificate holder.



by Catherine Coberly

The Gift of Order

Finding peace in the chaos of life can be a daily challenge, especially when it comes to things that are out of our control. We never know when our lives might be turned upside down or when an event might mark a day that will be forever remembered. While these are part of the human experience, finding order in the upheaval can bring a sense of calm and contentment when the outside world insists otherwise. October is a natural pivot point - before the holidays descend and our calendars are filled - to slow down and take stock of how we can prepare ourselves and our families for the unexpected while finding joy in the process.



While we often edit a room or refresh a wardrobe, true peace comes when our affairs are in order: the documents gathered, the details written down, the plans made clear. Far from being a task reserved for later years, this is a gift for every stage of life. A well-organized linen or leather household binder can be a beautifully simple place to collect essentials: insurance policies, contact lists, password managers, trusted vendors, even favorite recipes or a hand-written note. Updating wills, trusts, and medical directives is a small act of foresight that bring ease not just to us, but to those we love. There's a quiet grace in knowing that everything is in its place, not just in our homes but in our lives.

To be prepared is to live more freely, with the confidence that what matters most has been thoughtfully cared for. Order is less about paperwork and more about presence. Building a legacy that is not just practical but personal is a kindness extended to our family that will be appreciated for years to come. When our lives are thoughtfully arranged, we make space for beauty, for gathering, and for joy on Lido. It is, in its own way, one of the most lasting gifts we can give.



- Trick-or-treaters need to see and be seen.
 - Use face makeup instead of masks which make seeing difficult.
 - Give trick-or-treaters a flashlight to light their way.
 - Add reflective tape to costumes and trick-or-treat bags.
 - Use flame-resistant costumes.

- A parent or responsible adult should accompany young children door-to-door. Make sure adults know where the older kids are going.
- Walk, don't run!
- Only visit homes that have a porch light on. Accept treats at the door - never go inside.
- Walk only on the sidewalks, not in the street and use extra care when crossing streets.
- Drivers - use extra caution. Kids may forget to look both ways before crossing.
- If you are planning to welcome trick-or-treaters to your home, light the area well so young visitors can see.

Download the free Red Cross First Aid App for instant access to expert first aid advice right at your fingertips.

Have a safe and fun Halloween!



IN LOVING MEMORY

Ora DeAmicis MacFarlane

March 13, 1933 - July 14, 2025

Ora DeAmicis MacFarlane, formerly of 908 Zurich Circle, passed away at her home in Portsmouth, New Hampshire, on July 14, 2025. She was 92.

Born on March 13, 1933, in Leominster, Massachusetts, Ora earned a BA from Skidmore College, where, at a mixer at Rensselaer Polytechnic Institute, she met her beloved husband and lifelong best friend, Neil Lee MacFarlane. They married on October 15th, 1955, and embarked on a 63-year-long adventure, first while Neil served as an officer in the United States Navy, and later during his forty-three-year career with Esso Research and Engineering.

Living, working, and raising two children in over a dozen countries around the world, Ora and Neil reinforced their shared passion for global citizenship and appreciation for cultural difference. Neil and Ora retired to Lido Isle in 1998. Ora served as a ballot official in many federal, state, and local elections—after a lifetime of absentee ballots, she cherished the rituals of representative democracy. She was also a dedicated member of the Lido Isle Community Emergency Response Team, Women's Club and Yacht Club. Neil was her proud and enthusiastic escort at all these events, and she his most loyal fan whether he was sailing his Harbor 20, organizing the Yacht Club lectures, or serving as LICA President.

Neil passed away in 2018. Ora is survived by son Duncan Leo and daughter-in-law Aimee; daughter Lisa; and grandchildren Emma, Duncan Thorpe, Lydia, and Dorothy.

Spiced Pumpkin Latte Chia Seed Pudding Cups

Pack these up in little mason jars for the perfect breakfast on the go!

Ingredients:

1/4 cup chia seeds, 1/2 cup coconut milk (full fat from a can), 1/2 cup almond milk, 2 tb maple syrup, 1/4 cup pumpkin puree, 1 tsp pumpkin pie spice, 1/2 tsp vanilla extract.

Directions: Mix all the chia pudding ingredients together in a bowl for 1-2 minutes until everything is well incorporated. Cover and place in the fridge to firm up for at least 2 hours, or overnight. Top with whipped heavy cream or coconut cream and a sprinkle of cinnamon.

From Jessica Hoffman
choosingchia.com



POSTIL
PROPERTY MANAGEMENT

Property Management | Estate and Personal Security

📞 949.213.9980 🌐 ppmser.com

Providing peace of mind for primary, secondary and investment/rental properties

REPRESENTING EXCEPTIONAL HOMES THROUGHOUT ORANGE COUNTY

"Sterling went above and beyond to help us with everything that needed to happen leading up to the sale of the house. He made this difficult process feel easy and smooth, even when there were roadblocks and frustrations."

- Lido Seller

Sterling Coberly

Luxury Real Estate Agent

DRE 02146070

949.244.2636

sterling.coberly@compass.com

M&A | COMPASS

Compass is a real estate broker licensed by the State of California operating under multiple licenses. License Numbers: 01999608, 027226, 027265, 026762, 043291, 099026, 095619, 094027, 184298, 184507, 184671, 184725, 107909, 127467. All material is intended for informational purposes only and is compiled from sources deemed reliable but is subject to errors, omissions, changes in price, condition, sale, or withdrawal without notice. No statement is made as to the accuracy of any description or measurement (including square footage). This is not intended to be a property listing. No financial or legal advice provided. Equal Housing Opportunity. Photos may be virtually staged or digitally enhanced and may not reflect actual property conditions.

Old Isle

By Carol Mason

The Lido Clubhouse A Star is Born

Old Isle has reflected from time to time on the lovely Los Angeles house pictured in this article from the Old Isle past – September 2019. Architect Harry McAfee made a splash in LA architectural circles with his Andalusian style, which he then imported to the 1928 Clubhouse project on Lido Isle. Here we revisit the Lido Clubhouse design history, with some 2025 embellishments.

The Lido Isle Clubhouse has always had a bit of Hollywood in it, especially in its early years, when the building's strong Moorish roots were there for all to see. MGM designers Harold Grieve and Harry McAfee were the main design talents behind this center of Lido Isle life, with Grieve handling the interior elements and McAfee the exterior. This month, we are exploring the exotic exterior of our Clubhouse.

Harry McAfee (1888-1960) was born in San Francisco, where he met and married Lucy Page-Brown (1892-1923) in 1915. Both eventually worked in set design and art direction at MGM, although their early married life was spent in architecture. An interesting and Lido-irrelevant aside is that Lucy's father was architect A. Page Brown, who designed the San Francisco Ferry Building, which opened in 1898. A. Page Brown did not see the Ferry Building completed, however, since he died from injuries sustained in a runaway horse and buggy accident in 1896. Anyway, one can imagine that it was an interesting time to be in the architectural profession in SF with such luminaries as Bernard Maybeck and Julia Morgan both creating magnificent structures during that period.

But Harry and Lucy had said "good-bye" to the Bay Area for LA, living at one point on Highland Ave. in Hollywood. Unfortunately, tragedy befell the couple once again as Lucy McAfee herself was killed in an auto accident in June 1923, when her Cadillac collided with a Pacific Electric train in Beverly Hills.

Harry, a new widower, threw himself into his work, forming the architectural firm Swasey and McAfee, who were architects for the development of the French Norman-style Lake Arrowhead Village in 1923. But McAfee was particularly inspired by Mediterranean styles. Printed here is an incredible photo from 1925 showing an Andalusian-inspired house that McAfee designed in the Whitley Heights area of Los Angeles, which is a neighborhood close to the Hollywood Bowl, nestled between Highland Ave. and the Hollywood Freeway. The charm of this lovely house at 2059 Watsonia Terrace, which pours itself, with such grace, down one of the Hollywood Hills, is apparent. The house has 15 different floor levels, something that McAfee was not faced with in his Lido Clubhouse design. But the Watsonia Terrace property does share many architectural features with our own Clubhouse, such as the white plasterwork in the walls, the chimney shapes, and the prominence of the open-air patio (long ago replaced in our Clubhouse by the Garden Room).

While much of McAfee's original Lido Clubhouse design is now lost, having been remodeled out of the Clubhouse over the years for various earthquake safety and expansion reasons, we are lucky to have an archive of photos that bring back the unique and inspired atmosphere of the original 1928 Clubhouse building. McAfee designed several other properties in Whitley Heights during his career and went on to be art director in 33 Hollywood films.

Club, the Southern Pacific Association of the Amateur Athletic Union, and the Out Board Motor Boat Association. Guests were welcomed at the new club building, which is a fine example of Mediterranean architecture designed by Harry McAfee of the Lido Isle Architectural board. It has been furnished completely under the personal supervision of McAfee and Harold W. Grieve of Hollywood, who has won fame for his excellent work as the interior decorator for homes belonging to such noted people as Adolf Menjou, Betty Bronson, Lita Gray Chaplin, Marshall Neilan, Elsie Janis and Jack Mulhall. This new club building reflects the architectural standards that will make Lido Isle the foremost beach colony of the West. The Lido Isle Art Jury must pass on all plans for buildings, either private or public, and thus a high standard of architecture is assured and the possibility of having a wooden beach shack set up on the next lot is eliminated. Mr. Elsbach explained, however, that it is their purpose to emphasize attractive appearance rather than high cost in the buildings approved for Lido Isle. "We know," he

A Google Maps screenshot showing the Watsonia Terrace neighborhood today, with the Hollywood sign on the hill in the background.



An excerpt from the Anaheim Gazette, July 5, 1928, reporting on Lido Isle's grand opening, with particulars on the Lido Clubhouse. Public Domain.



McAfee's 1925 Spanish house design at Watsonia Terrace. From House & Garden magazine, December 1925. Public Domain.



McAfee's patio in the 1928 Lido Isle Clubhouse building (Dick Whittington Collection of photos at USC—Doheny Library).

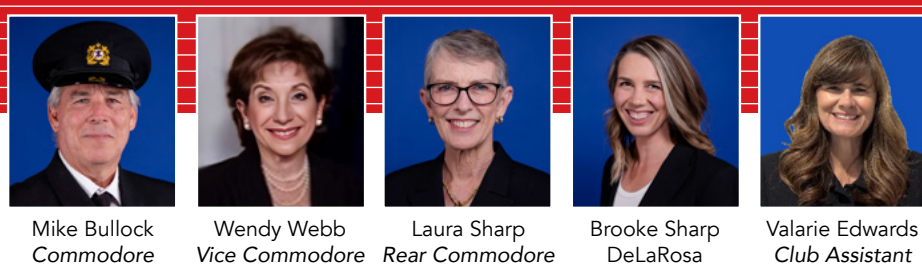
A 1928 opening day view of the Lido Clubhouse. (Dick Whittington Collection of photos at Doheny Library).



A 1928 opening day view of the Lido Clubhouse. (Dick Whittington Collection of photos at Doheny Library).



The view UP the hill at Watsonia Terrace. From House & Garden magazine, December 1925. Public Domain.



Mike Bullock Commodore
Wendy Webb Vice Commodore
Laura Sharp Rear Commodore
Brooke Sharp DeLaRosa Sailing Director
Valarie Edwards Club Assistant

Community, Music, and Memories

End of Summer Concert Benefits Junior Sailing Program

As the sun set on another great season of summer fun, our End of Summer Concert in the Park was merged with the Junior Sailing Program's annual fundraiser for the first time and it turned out to be a great combination. This may become a new Lido Isle tradition.

Our band for the evening was Surf's Up, which featured 3 generations of the Donny Goldberg family and bills itself as a Beach Boys Tribute group. They really knocked it out of the park (pun intended), playing many beloved songs from the Beach Boys, Jan & Dean, Dick Dale and others. Appropriately for a Junior Fundraiser, the youngest band members were teens who are immensely talented. The next day a couple of people mentioned to me that they still had songs from the night before stuck in their head which I thought was a little funny because I did, too.

Things were hoppin' and poppin' at the annual Wine Wall section of the Jr. Fundraiser as happy ticket buyers found highly rated bottles for \$40, far below their retail price. A wide range of wines were featured including bottles of Kistler Chardonnay and Schrader Cabernet Sauvignon. One guest found her favorite Pinot Noir and came back twice for more! We want to thank our generous island donors for opening their cellars to support the LIYC Junior Sailing Program.

We held a silent auction displayed on tables around the edge of the park when the gates opened. During the band's breaks we also held a live auction with a great array of donations. Auctioneer Susie Hyman once again proved how generous the people of Lido can be in bidding on items to support our Junior Sailors.

As they say, "it takes a village"... and you will no doubt agree as you see all those who contributed to making the End of Summer/Jr Sailing Fundraiser a huge success— both in terms of supporting the program and the fun memories that were created! So many people to thank for their hard work and generous support! Our apologies if we missed anybody. And the bidders who participated in the auctions and wine wall are too numerous to name! Thank you all!!



Thank you to our Fundraising Team



SC Ken & Jan Wirgler, VC Wendy Webb & Larry Brown



The Beach Boys Tribute Band



Commodore Mike & Julie Bullock & Family



SC Dave & Pat Lamb, Glennon Gray & SC Mike Baginski



The Wine Wall

Save the Dates: Cars, Cruises, & Holiday Cheer

As the LIYC 2025 calendar rolls on, our next event will be a partnership with the Men's Club for the fourth annual **Cars and Coffee** on **October 18th**. Come on out with the family and get a cup of coffee and a donut (while supplies last), make friends with a new neighbor and take an up close look at some of the coolest and unique cars or motorcycles Lido Islanders have tucked away. Last year, over 50 vehicles and hundreds of Lido Isle residents, grand kids, dogs and cats came out to enjoy Randy's donuts and Starbucks coffee, socialize and to see their neighbors' special vehicles.



Jan Wirgler, Terri Carlson, Shauna Oyler, Patricia White

Be ready to join us for our **Raft Up Cruise to Nowhere** on **October 25th**, 1:00, on the LICA Clubhouse dock. There will be easy accessibility to all the participating boats and plenty of food and beverages. We would love to have your boat on the dock for this fun event. If you would like to have your boat at the party, please RSVP Brian at bbenson@cpa.com. We look forward to seeing you October 25th!

Save the date for our **Annual Electric Boat Holiday Cruise Friday, December 12th** at 6:00pm. Tie your boat dockside and rendezvous with your guests at Lido Isle Yacht Club. Then enjoy dinner and dancing at Bahia Corinthian Yacht Club. The cost is \$95 for members and \$110 for non members. For questions, call Suzanne Cardwell (206) 310-8919 / zanes@comcast.net or Barbara Wall (949) 294-7904 / barbaraonlido@aol.com.

We are looking forward to seeing everyone at all of these gatherings.

Vice Commodore Wendy Webb is planning a cruise to the Great Lakes and Niagara Falls on **October 2nd, 2026**. There is special pricing before October 1st, 2025. Contact Marion Smith for more information.

Keep your eyes peeled for the announcements on our Annual Meeting and Change of Watch, and All Isle New Years Eve party.

—Commodore Mike Bullock, VC Wendy Webb, RC Laura Sharp

Lido Isle Men's Club & Lido Isle Yacht Club

Cars and Coffee

Free **October 18, 2025**

9am – 12pm • Via Lido Soud & Piazza Genoa

FOR MORE INFORMATION OR TO ENTER YOUR CAR, EMAIL: LIDOCARSNCOFFEE@LIDOISLEMENSCLUB.COM

We need your "special" car for our 2025 Cars and Coffee event on October 18th.

Whether you have a rare classic or just a car that's special to you that you would like to show to your neighbors, dust it off, shine it up, and plan to bring it to Cars and Coffee.

If you would like to show your vehicle or would like more information, please email mb92663@yahoo.com.

Please join Vice Commodore Wendy Webb's

2026 COMMODORE CRUISE TO NIAGARA AND THE GREAT LAKES

OCTOBER 2-9, 2026

VIKING OCTANTIS EXPEDITION SHIP Milwaukee to Toronto
Contact **Marion Smith** / Affiliate of TERRAMAR TRAVEL INC SOT# 2053942-40
Email: Terramarworld@gmail.com Phone: 949-701-8286

LIDO ISLE YACHT CLUB
Junior Sailing

Fall Sailing is Underway for JUNIOR SAILING

Halloween Regatta October 19th

The Junior Summer Sailing Program flew by this year! We had a lot of fun family events this summer and it always amazes me to see how much the kids' sailing skills progress during a short six weeks.

Our Fall Sailing Program is off to a great start with about 20 sailors participating in the various classes. Our racers are practicing Wednesdays and our Starfish & Sea Urchin class and Novice & Pre-C3 classes are running on Sunday afternoons. The Fall Program schedule is below.

Starfish & Sea Urchin: Sundays 2pm-5pm
Novice/Pre-C3: Sundays 2pm-5pm
Sabot Racing: Wednesdays 3:30pm-6:30pm

Lido Isle Junior Vice Commodore Vance Khamsi has been having a good year with his C420 campaign. He and his crew placed 2nd at the US Open held by San Diego Yacht Club, and recently returned from the C420 Nationals at Hyannis Yacht Club in Massachusetts, where he qualified for the Gold Fleet, finishing 65th out of 150 in rough conditions- 20 knot winds and 6-foot swells.

LIYC's Annual **Halloween Regatta** is on **October 19th**. Be sure to register your sailors early as late fees go into effect starting a week before the event. You can register your sailor at www.liyc.net/regattas. We can always use help with race committee, check-in, scoring and snacks. If you're interested in getting involved, please reach out to sailingdirector@liyc.net. We're happy to train any volunteers.

Lido Isle Men's Club & Lido Isle Yacht Club

Cruise to Nowhere Raft Up

OCTOBER 25TH
1PM-4PM

JOIN YOUR FELLOW MEMBERS FOR A FUN DOCKSIDE RAFT-UP AT THE LICA DOCKS WITH FOOD AND DRINKS

December 6th
6:30PM

Annual Meeting Change of Watch

10:00AM
Dinner/Dance

www.liyc.net

ANNUAL HOLIDAY DUFFY CRUISE

Friday, December 12, 2025
Bahia Corinthian Yacht Club • 1601 Bayside Drive • Corona Del Mar

6:00 p.m. Rendezvous at Lido Isle Yacht Clubhouse & Holiday Lights Bay Cruise
7:45 p.m. Dinner & Dancing

\$90 Members
\$110 Non-Members

Please contact Wendy Webb
wendy@wendywebb.com

Thank you for supporting Lido Isle Junior Yacht Club!

<p>Cash Donors:</p> <p>Platinum Jon and Melissa Flagg Evan Balis & Charlie Price with Charlie Price Group</p> <p>Gold Tamara & Jeff Current Amanda Donner Georgia Peters Leslie Thompson, Compass</p> <p>Silver Commodore Mike & Julie Bullock RC Laura Sharp Mark Snell Jim & Heather Wade</p> <p>Bronze Gregg & Devon Kelly Patterson Custom Homes Tim & Linda Cronin Dunlap Family Millbourne Finley Barbara Lawler Mendes Call Ranch Elizabeth Norris Steve & Kay Sharbrough</p>	<p>Suzanne & Joseph Spasato HSC Barbara & SC Quentin Wall Nancy Arnold</p> <p>Auction Donors 1923 Restaurant Group 27 Miles Malibu Arc Butcher and Baker Jim Aust Cindy & Abbott Ayloosh Mike Baginski Bluewater Grill Buddha's Favorite Chef Mookie Colors Hair International Melissa Corrigan & Rick Derrfx Driven Bikes Duchess of Pearls Electric Boat Company Roberta Feuerstein Melissa Flagg Glenon & Toni Gray Hair Colors International Eric & Cathy Henn Jim Humpert Susie Hyman Jeffery Alan Salon</p>	<p>Jonathan at Platinum Site Kut from the Cloth SC Dave & Pat Lamb The Lowfers Lido Jr. Sailing Foundation Lido Theatre LIYC Senior Club Lyon Family M Street Scott McMillan Magic Nails Magnolia Consignment Pete & Mary Manno Ilona Martin Alison McCormick Mega & Well Pilates OC SC Diana Miner, Diana Miner Real Estate Molo Gary & Sheri Moore Newport Nails Kim & Ron Nichols Mike & Lori O'Shea Kiki Graham Pacific Rose Palmilla Cocina y Tequila Georgia & Boyd Peters David Rahn Richard at Reyn Spooner</p>	<p>Roman Family SC Roger Rousset Sinclair family Richard Swatt The Camery Seafood of the Pacific The Dock Tupelo Junction Velvet by Graham West Coast Event Productions William Harold & Sons SC Bob Yates Ullman Sails Wine Wall Donors Mike & Ally Andersen Melissa Corrigan Phil & Maureen Gautsch Glenon & Toni Gray Eric & Cathy Henn Susie Hyman Dave & Pat Lamb John & Suzanne Luhrs Pete and Mary Manno Roger Rousset Jim & Nancy Ruprecht Carol Schrader Walt & Carol Straub</p>
---	--	---	---

FEATURED LISTINGS



339 VIA LIDO SOUD | LIDO ISLE
4 Bed | 4 Bath | 2,865 SF | \$11,595,000



3810 CHANNEL PLACE | NEWPORT BEACH
3 Bed | 2.5 Bath | 1,701 SF | \$6,450,000



120 VIA TRIESTE | LIDO ISLE
5 Bed | 4 Bath | 3,671 SF | \$5,850,000



105 VIA WAZIERS | LIDO ISLE
3 Bed | 3 Bath | 2,422 SF | \$4,995,000



2541 POINT DEL MAR | CORONA DEL MAR
5 Bed | 4.5 Bath | 3,179 SF | \$4,695,000



1515 ELECTRIC AVENUE | SEAL BEACH
3 Bed | 3 Bath | 2,002 SF | \$2,250,000

COMING SOON LISTINGS



VIA TRIESTE | LIDO ISLE
70' Wide Lot | Pool Home
5 Bed | 5.5 Bath | 5,507 SF
Presented at \$10,495,000



VIA XANTHE | LIDO ISLE
48' Wide Lot
3 Bed | 3.5 Bath | 3,490 sqft
Presented at \$5,800,000



VIA RAVENNA | LIDO ISLE
45' Wide Lot
5 Bed | 5.5 Bath | 3,552 sqft
Presented at \$5,800,000

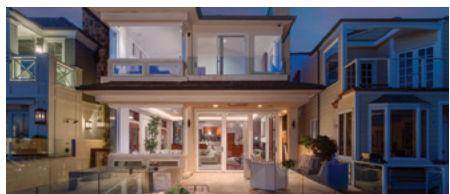


VIA LIDO SOUD | LIDO ISLE
35' Wide Lot
4 Bed | 3.5 Bath | 2,954 sqft
Presented at \$4,700,000

2025 LIDO ISLE SALES



816 VIA LIDO NORD
\$17,995,000 | Represented Buyer



517 VIA LIDO SOUD
\$12,995,000 | Represented Buyer & Seller



815 VIA LIDO SOUD
\$12,900,000 | Represented Seller



113 VIA SAN REMO
\$8,950,000 | Represented Seller



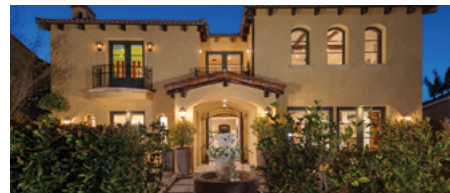
205 VIA EBOLI
\$9,299,000 | Represented Seller



426 VIA LIDO NORD
\$8,850,000 | Represented Seller



207 VIA EBOLI
\$7,995,000 | Represented Seller



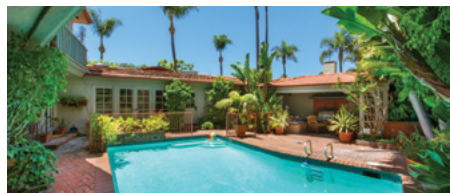
208 VIA PALERMO
\$7,995,000 | Represented Seller



129 VIA WAZIERS
\$4,795,000 | Represented Seller



109 VIA RAVENNA
\$3,995,000 | Represented Seller



200 VIA BARCELONA
Off-Market | Represented Buyer & Seller



107 VIA MENTONE
Off-Market | Represented Seller

2025 ADDITIONAL AREA SALES

1732 SKYLARK LANE
Newport Beach | \$6,995,000
Represented Buyer

601 LIDO PARK DRIVE #6D
Newport Beach | \$3,995,000
Represented Buyer

2307 HOLLY LANE
Newport Beach | \$3,900,000
Represented Buyer

119 RIVO ALTO CANAL
Naples | \$3,290,000
Represented Seller

511 SANTA ANA
Newport Beach | \$2,495,000
Represented Seller

363 MONTE VISTA
Eastside Costa Mesa | \$1,999,999
Represented Seller

2008 BAJA
Newport Beach | \$1,995,000
Represented Buyer

291 FLOWER STREET
Eastside Costa Mesa | \$1,795,000
Represented Seller

2662 SALMON
Los Alamitos | \$1,799,000
Represented Seller

358 E YALE LOOP
Irvine | \$1,490,000
Represented Buyer

2018 ANAHEIM
Costa Mesa | \$1,280,000
Represented Buyer

10251 DELANO
Cypress | \$1,195,000
Represented Seller

17697 BRITTANY LANE
Huntington Beach | \$599,999
Represented Buyer



JON FLAGG
Luxury Property Specialist
949.533.7878
Jon@FlaggRealEstate.com
jonflagg.com | DRE# 01316048
@JonFlaggRealEstate

Pacific | Sotheby's
INTERNATIONAL REALTY

Each Office is independently owned and operated. DRE #01767484



From John's Legacy to Ken's Triple Crown

by Len Davis, Official LIMC Reporter & Resident Wit

The September meeting of the Lido Isle Men's Club turned out to be a final send-off for our late President, John Schlegel. The event was at Molo Restaurant formerly the site of Sabatino's on the Lido Peninsula just over the bridge, one of the rare times any Lido Resident even ventures beyond this fabled Isle. John had actually planned this event a month or two before hand so it was a sad irony that he was not there except in spirit. Among the delicious dishes served was their outstanding flatbread and John's favorite: sausages sauteed with onions and green peppers. Their pizza ain't bad, either! Some nice wines were provided by the restaurant and we were entertained by a near ringer of a singer doing Frank Sinatra numbers.

Of course, the buzz that evening was all about who would be proclaimed as the new LIMC president. The Men's Club does not have any formal by-laws or procedures for election of officers. The defacto method of choosing our leader seems to be scuttlebutt, word of mouth or just plain forced coercion. The end result was announced by Treasurer Phil Ramer who did not proclaim himself as president but, rather, Ken Wirgler. Wirgler has now achieved the Lido Isle Triple Crown as Commodore of the Yacht Club, President of LICA and now President of the Men's Club. Something no-one else has yet achieved. We are in good hands, especially because Ken is one of the few islanders who is actually able to figure out how to open those large glass panels in the Bay Room of the Clubhouse where many of our gatherings are held. (He was the one who had them put there in the first place so maybe that was part of his plan.)

Getting Ken to actually take the job was the result of many of us, myself included, coaxing and cajoling him to accept a job no-one else seemed to want. And he will have large shoes to fill. His past



Ken Wirgler
LIMC President

The Blue Beet AUG 18TH



Offering toasts to our past President John Schlegel were Dave Rhodes, Dave Lamb, John Clement, Phil Ramer, Russ Butcher, and John Oyler.

Brent Anderson, John Clement, Michael Potter, and Dave Lamb



experience will make that task a lot easier than it would have been for one of us peons.

Ken has decided not to rock the Duffy too much by, at least until year's end, continuing to pursue the agenda left by John. There will be a car show this month at Piazza Genoa; contact Mike Bullock for details. There will also be an Oktoberfest Party sponsored by Gary Gray although this time at the clubhouse while Gary goes through some construction work at his home. Gary says that the event will once again be catered by Ernie Rahm who has done such a fabulous job in the past.

November is TBD and in December, Ramer will arrange for our annual Prime Rib affair. At this event, guys are expected to bring a really good bottle of wine to share. I suggest a Magnum as LIMC members can be notoriously thirsty. Please RSVP when you get the emails for these events. This is one rule that we have in the Men's Club although a lot of people don't obey it, which is probably why we don't have any other rules.

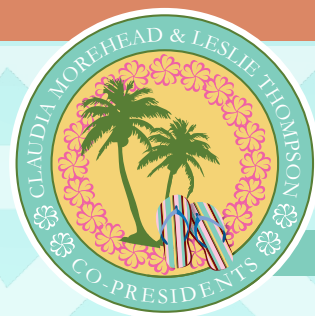
This lack of structure may appeal to new members, some of whom showed up for the Molo dinner. Brian Benson brought two new prospects he rescued from the gutters of Via Quito, Peter Burton and David Godber. We hope they will join us. Kimo McCormick brought Bruce Gulbas who just bought a place on Via Lido Nord and Paul Greubel who bought one on Soud. I think Kimo's wife had something to do with these transactions.

Phil Ramer brought Fletcher Ewing who he has convinced to join us and managed to reclaim George Twist. George was a member until a few years ago until he went astray but he experienced an epiphany, saw the error of his ways and has rejoined the flock.

We didn't throw any of these new guys into the bay as it was not a convenient thing to do at Molo's. When we are back in the clubhouse for the Oktoberfest—where I am hoping for some good German beer—we hope to take care of this matter.

UPCOMING LIMC EVENTS

October 13	Oktoberfest	Clubhouse
November 10	TBA	Clubhouse
December 14	Prime Rib Dinner	Clubhouse



LIWC
LIDO ISLE WOMEN'S CLUB

Fall Social Kicks Off a New LIWC Season

LIWC is off to a great start! Friends old and new, met at the clubhouse September 11th, kicking-off the season with our annual Fall Social. A beautiful summer evening set the tone— we immediately settled in, enjoying the relaxed, festive vibe and reconnecting with friends. It goes without saying, the delicious hors d'oeuvres and beverages were flowing and savored. Between photo-ops and conversations, one thing was clear— LIWC women truly embrace Lido living and are grateful for the deep community connections.

LIWC is busy working on the 2025-2026 Membership Directory. If you haven't paid your dues, it's not too late! Membership forms are available at the LICA office or email: LIWCemail@gmail.com for information.



Tamela Caveney, Valerie Edwards, Evie Woollard



Sitting: Mary Manno, Sally Holt, Nancy Gfroerer
Standing: Diana Miner, Nicole Kofford, Sharon Wright



Alice Brewer, Valerie Cantwell,
Sandi Warneke



Bonnie Chase and Mary Manno
Sonya Gray and Terri Carlson



2025 LIWC Board



Past LIWC Presidents



Peggy Grodach, Nancy Wimer, Debbie Benedict



Claudia Morehead
Co-President

Leslie Thompson
Co-President



2025 LIWC Board
Marsha Ferrall, Sue Grant,
Leslie Thompson,
Claudia Moorhead,
Suzanne Cardwell



Jodi Beck and her
fabulous shoes!



Lori O'Shea, Ilona Martin,
Susie Hyman



Kaye Sharbrough, Ilona
Martin, Roann Turk

LIWC Upcoming Events

October 17 Ciao Bellas!
November 5 Barclay Butera – 30 Years of Design
December 4 Merry & Bright Boutique
December 9 Holiday Luncheon
February 12 Galentine's Event
March 10 Rogers Gardens – Spring Flower Workshop
April 30 Fiesta
June 4 Installation Luncheon

Special Interest Groups

Book Club Contact: Gail Reisman
Pilates Contact: Sharon Wright
Yoga Contact: Jan Wirgler
Bridge Contact: Debbie Benedict
Mahjong Contact: Susan Crossley

Are you a Bridge player or interested in learning how to play Bridge? Now's your chance!
Contact Debbie Benedict for details.

Have you been wanting to learn and play Mahjong? This traditional tile-based game has become all the rage and LIWC Mahjong is seeking all those interested.
Contact Susan Crossley.

OCTOBER 17th - CIAO BELLAS!

Donatella and Franco Barone are delighted to host the Lido Isle Women's Club at their restaurant! Il Barone brings the vibrant, authentic tastes of Italy straight to our members' tables during our October luncheon. Guests will enjoy a thoughtfully curated luncheon featuring a storytelling journey through each specialty dish—complete with recipes and step-by-step cooking instructions. Renowned for their passion for refined cuisine and impeccable hospitality, the Barones now welcome guests at their new location on Coast Highway, formerly home to Cucina Alessa. They look forward to sharing their culinary artistry and creating a memorable dining experience for our women's club. Reservations limited to 60 attendees.

Looking Back... Hats in Bloom



It was June 1970, and LIWC ladies staged a stunning celebration of the age of Flower Power with a "Hats in Bloom" luncheon at the Lido Clubhouse. Using only Lido-grown floral adornments on their "chapeaux", Lido ladies let their creativity shine. Maybe time to bring this lovely event back?

Calling All Bridge Players to join Marathon and Party Bridge!



PLEASE CONTACT DEBBIE BENEDICT
FOR MORE INFORMATION
949-331-7169
BENEDICTDEB@SBCGLOBAL.NET

"Grace at the Helm"

LIDO ISLE WOMEN'S CLUB (LIWC) 2025-26 MEMBERSHIP APPLICATION - JOIN/RENEW TODAY!

A	Member Name: _____ <input type="checkbox"/> CHECK HERE IF NO CHANGES FROM LAST YEAR If no changes, SKIP Section B, and proceed to Sections C and D
B	Spouse/significant other: _____ Home Address: _____ Telephone: (Home) _____ (Cell) _____ Email Address: _____
C	Type of Membership: _____ Note: Carefully read each option below. REGULAR MEMBER \$60: Regular membership is open to all women residing on Lido Isle or women who have moved off the Isle and have continued <i>without interruption</i> to pay their membership dues with an interest in staying affiliated with LIWC. Regular members are notified of social events and receive a LIWC directory. Only LIWC women residing on Lido Isle have full voting privileges and are eligible to serve as elected members of the LIWC Board of Directors. FRIEND OF LIWC \$60: A Friend of LIWC may use this form as the Friend Membership Form pursuant to Article III, Section 1 of the Bylaws of LIWC. A Friend must be sponsored annually by a Regular Member of LIWC. A Friend must demonstrate a sincere interest in participating in an LIWC interest group. Friends shall pay the Non-Member rates for events and shall have no voting privileges. If applying for a Friend Membership, please indicate the following: Name & Address of Sponsor: _____ Interest Group(s) in which you are participating: <input type="checkbox"/> Yoga <input type="checkbox"/> Bridge <input type="checkbox"/> Pilates <input type="checkbox"/> Book Club HONORARY LIFE MEMBER \$0: Honorary Life Members of LIWC are past LIWC Presidents who no longer reside on Lido Isle. Honorary Life Members shall not pay annual dues. They will be included in the membership directory and will receive member reduced rates for events.
D	PAYMENT AMOUNT ENCLOSED: \$60 Check Payable to LIWC or Zelle to liwcemail@gmail.com To be included in the LIWC Directory, return completed application along with payment to Lido clubhouse, 701 Via Lido Soud, no later than August 31, 2025 . Questions? liwcemail@gmail.com

Ciao
BELLAS
Welcoming the Lido Isle Women's Club

il Barone

OCTOBER 17 | LUNCH 11:30 AM

\$60 MEMBER | \$65 NON-MEMBERS

Donatella and Franco Barone graciously invite the Lido Isle Women's Club to partake in an exquisite luncheon, where the timeless and authentic flavors of Italy will be celebrated in true culinary style.

The afternoon will feature a beautifully narrated presentation of three signature courses, each accompanied by detailed recipes and artisanal cooking techniques by our gracious hosts.

This event is limited to 60 guests, so RSVP ASAP! Please deliver check payable to LIWC to the clubhouse or Zelle at LIWCemail@gmail.com. Parking is extremely limited; we suggest carpool. We need your reservation prior to October 14. Questions? LIWCemail@gmail.com.

Member Name _____

6700 WEST COAST HWY. | NEWPORT BEACH


**LIDO MAHJONG
PLAYERS**
THE CLUBHOUSE IS RESERVED EVERY
WEDNESDAY 1PM-4PM
DROP IN AND PLAY MAHJONG
BRING YOUR MAHJONG SET AND PLAY
WITH LIDO NEIGHBORS!!

BLACKMAN LTD.
Fine Jewelry and Gifts Est. 1957

3388 Via Lido Newport Beach Tel 949-673-9334
www.blackmanltd.com info@blackmanltd.com

LIDO ISLE TENNIS & Pickleball CLUB

Annual Member/Guest Tennis Tournament

This year's Member/Guest Tournament brought an exciting mix of team and individual play to all three Lido Isle courts and showcased the lively spirit of our tennis community.

Team Round-Robin - Jucar & Barcelona

Four set teams competed in a spirited round-robin format, with each team facing every other team in its division. Matches were played to seven games, keeping the pace fast and competitive. The top two teams from each division advanced to the finals, where a decisive four-game pro set on San Remo determined the champions.

Rotating Doubles - San Remo

While team matches unfolded on Jucar and Barcelona, San Remo hosted a dynamic rotating doubles draw with eight individual players. Each round paired participants with new partners and opponents, creating constant variety and lively matchups. After two hours of play, the four players with the highest point totals earned their place in a thrilling final.

Celebration on San Remo

As the sun set, players and guests gathered on San Remo for a well-earned celebration featuring festive **El Ranchito** fare, refreshing margaritas, competitive games with prizes, and the excitement of the championship matches. The atmosphere was one of camaraderie and fun—true to the spirit of the Lido Isle Tennis & Pickleball Club.

Once again, our annual Member/Guest Tournament was a resounding success—a full day of spirited tennis, lively fellowship, and great memories for all involved.



Tournament Participants:

Leo Heydorf, Angela Doheny, Karen Littlefair, Frank Martell, Donna Martell, Margie Mateljan, George Hernandez, Jed Halsey, Bill Kaley, Eric Landon, Amanda Donner, Mike Henderson, Inna Beirith, Kim Rodosky, Ed Welbourn, Kelly Rutter, Carey Welbourn, Alen Roof, Char Hubble, Susanne Henderson, Michelle St Amore, Elena Ondar, Jessi Zanderholm, Roey Carone, Michele Mizilo, Lievike Engleking

Save the Dates...

Fall Fun is Coming!

The Lido Isle Tennis & Pickleball Club has a slate of festive fall events you won't want to miss!

Member Appreciation Night

Wednesday, October 1, 2025 | 6:00 - 8:00 PM

Join us as we celebrate YOU - our wonderful community - with light bites, camaraderie, and good vibes. Organized by Lido Pro Margie Mateljan.

Oktoberfest Pickleball Social

Sunday, October 5, 2025 | 10:00 AM - 2:00 PM

Dust off your dirdml or lederhosen and grab your paddle for Oktoberfest-themed treats, friendly matches, and plenty of fun on and off the court.

Annual 'Party of Parties' - Sunset Saloon

Friday, November 7, 2025 | 6:00 - 10:00 PM | Lido Clubhouse

This is the party of the year! Enjoy dinner, drinks, and dancing to live music by *Whiskey Hayride*. Space is limited, so sign up early.



Mike & Susanne Henderson, George Hernandez, Donna Martell



Jessi Zanderholm & Margie Mateljan

Lido Isle Tennis & Pickleball Club
Wants to say....

Thank You

MEMBER APPRECIATION
Tennis & Pickleball Social Play
Organized by Lido Pro Margie Mateljan

OCTOBER 1ST 6-9PM
SAN REMO COURT
DINNER & DRINKS SERVED

RSVP
LidoIsleTennisClub@gmail.com

LIDO ISLE TENNIS & Pickleball CLUB

3RD ANNUAL OKTOBERFEST

PICKLEBALL TOURNAMENT
SAN REMO COURT

OCT 5TH 11-3
MEMBERS FREE • GUESTS \$10
RSVP LIDOISLETENNISCLUB@GMAIL.COM

LIDO ISLE TENNIS & Pickleball CLUB PRESENTS...

SUNSET SALOON

SADDLE UP TO BE SERVED SEASIDE

NOVEMBER 7TH
6-10PM
LIDO ISLE CLUBHOUSE

DUST OFF YOUR BOOTS & GRAB YOUR HAT FOR A NIGHT OF
DINNER • DRINKS • DANCING

LIVE MUSIC BY WHISKEY HAYRIDE
SALOON DANCERS
MEMBERS \$50 • GUESTS \$65
ZELLE OR CHECKS TO LIDOISLETENNISCLUB@GMAIL.COM



Margie's Ladies - Stayika, Winston, Rosey, Apple, Tele, Fave, Rhoda and Crew

Eric Landon, Carey & Ed Welbourn, Karen Littlefair, Amanda Donner, Jed Halsey, Angela Doheny



Eric Landon, Angela Doheny, Karen Littlefair, Allen Roof

Carey Welbourn and Karen Littlefair



Roey Carone, Kim Rodosky, Char Hubble, Lievike Engleking



Ryan Coolidge, Nancy Arnold, Annika Wilson at our Endless Summer Tennis Event

Join the Lido Isle Tennis & Pickleball Club

It's never too late to join the fun! With **over 220 members and growing**, LITPC welcomes players of every level who enjoy friendly competition, social connection, and unforgettable island events.

- **Annual membership: \$100**
- Supports a tradition of top-notch adult and junior tennis and a vibrant, fast-growing pickleball program.
- Offers spirited tournaments, engaging clinics, laid-back socials, and festive gatherings year-round.

Everyone is welcome—no experience required.

To join, email lidoisletennisclub@gmail.com and help us finish the season strong while celebrating what makes Lido Isle so special.



Michelle St. Amour and Bill Kaley

Tennis Lessons on Lido

LIDO ISLE TENNIS PROFESSIONAL STAFF:

HEAD TENNIS PRO:

Margie Mateljan - NCAA All-American. 30+ years teaching in Newport Beach, 15 years on Lido Isle. RSPA certified and insured, CPR certified, Safe Play approved. \$115 private rate/hour, \$30-40 clinic

ASSISTANT TENNIS PROS:

Robbie Reenan - Intermountain Top Ten Player, 20+ years teaching experience in Newport Beach, RSPA insured, CPR certified, \$115 private rate/hour

Kirk Orahoad - Assistant Tennis Professional - 30+ years teaching experience. Boys and Girls High School Coach, Director of Tennis Mesa Verde CC, UCI PE instructor, coach of many highly ranked players. RSPA certified and insured, CPR certified, Safe Play approved. \$115 private rate/hour

For all lesson inquiries, please contact Margie Mateljan at 949-233-5670

Friendly Reminders & FYI

- Courts may be reserved **up to two weeks in advance** at lidoisle.org.
- Pickleball is permitted **only** on the Via Jucar pickleball/basketball court **8:00 AM-6:00 PM**. No pickleball on tennis courts or the Jucar practice wall.
- Music and alcohol are **not permitted** on pickleball courts.
- Courts are first-come/first-serve but must be vacated if a resident with a reservation arrives.
- Keys are for residents only; a resident must be present when their key is used. No "borrowed" keys.
- Security cameras are installed on the sport courts. Please use courts only for their intended purposes.
- If you use rollers to dry courts, hang them properly in the shaded area.
- A portable pickleball net is available on the Via Jucar court—please keep noise to a minimum.

Lido Isle Community Association
Board of Directors Meeting
General Session Meeting Minutes
Rescheduled: August 6, 2025 • 6:00pm

DIRECTORS PRESENT:		DIRECTORS ABSENT:
Alastair Fraser, President	Ronda Clark, Secretary	None
Joyce Boghosian, Director	Jeff Pence, Director	
Alan Schneider, Director	Bill Kroener, Vice President	REALMANAGE:
Camille Rizko Treasurer	Catherine O'Hara, Director	George Ross AMS® CMCA® CCAM-LS®, General Manager
Sid Crossley, Director		

Executive Session Disclosure (Civil Code § 4935 (e)). The Board met in executive session on August 6, 2025, and prior to and following tonight's General Session to consider litigation, matters relating to the formation of contracts with third parties, member discipline, and personnel matters.

I. Call to Order

The Rescheduled General Session of the August 6, 2025, Lido Isle Community Association Board of Directors General Session Meeting was called to order at 6:03 p.m. by President Alastair Fraser.

II. Homeowner Forum

Resident #1: Observer.

Resident #2: Observer.

III. Secretary's Report

Approval of Minutes

Resolution: A motion was made, seconded and carried to approve as amended the Minutes of the July 17, 2025, General Session.

IV. Treasurer's Report

B. Finance Committee Reports and Ratifications:

A motion was made, seconded and unanimously carried to ratify the following bank transfers:

- 7/29/25 – Transfer of \$686 from Chase Reserve Checking to Bank of CA Reserve AP to pay for a board room chair.
- 7/29/25 – Monthly transfer of \$160,000 from Chase Operating Checking to Bank of CA Operating AP to pay operating invoices.
- 7/30/25 - transfer of \$10,550 from Chase Operating Checking to Bank of CA Operating AP to return ARC and Clubhouse reservation deposits to members.
- 7/21/25 - transfer of \$15,000 from Chase Operating Checking to Bank of CA Operating AP to return ARC and Clubhouse reservation deposits to members.

V. Management Reports - No action.

VI. Committee Reports

This agenda section serves as a placeholder for each Board liaison to provide any updates related to their assigned Committee(s) and Board action thereon.

A. Architectural Committee - Matt Maclaren – Chair, Eric Henn, Valerie Fernandez, Camille Rizko – Board Liaison, Sid Crossley, Leslie Thompson.

Minutes: Resolution: A motion was made, seconded and unanimously carried to approve as presented the Minutes of Architectural Committee Meetings held on July 7, 2025, and July 21, 2025.

B. Landscape Committee - Ronda Clark, Joyce Boghosian.
Committee Updates - No Action.

C. Clubhouse/Snack bar/Events - Ronda Clark, Jeff Pence, Sid Crossley.
Committee Updates - No Action.

D. Marine Facilities Committee - Alastair Fraser, Jeff Pence, Camille Rizko, Sid Crossley.
1. Wharfage Agreement Applications - No action.
2. Genoa East Dock - No action.
3. Monthly Walks - No action.

E. CC&Rs Amendment Committee – Sid Crossley, Camille Rizko, William Kroener
Roof Amendment Election Update - No action.

F. Security Committee - Alastair Fraser, Sid Crossley, Alan Schneider
Common Area Security Reports - No action.

G. Tennis Committee - Sid Crossley, Joyce Boghosian.
1. Tennis Facilities Inspection Report - No action.

H. Major Capital Improvement Committee (MCIC) - Alan Schneider, William Kroener, Sid Crossley.
Committee Updates - No update.

I. City Relations Committee - Catherine O'Hara, Alastair Fraser, Jeff Pence
Committee Updates - No update.

J. Islander Newsletter - Catherine O'Hara, Editor
Committee Updates - No update.

VII. Board Business

A. President's Comments – No comments.

B. Directive 7 – proposal to add prohibition of pop-up canopies, beach shelters, tents, etc. to the Directive – Resolution: A motion was made, seconded and unanimously carried to approve the proposed revised Directive 7 for publication to the members for 28-days' comment.

C. San Remo Park unlock hours – consideration of change to unlock hours – Resolution: A motion was made, seconded and unanimously carried to lock the gates at San Remo Park throughout the day beginning this Friday, August 8, 2025. Management shall send an email blast to the community informing residents of this change and that access requires residents to use their LICA card keys.

E. Next Board Meetings – September Regular General Session -- Wednesday, September 10, 2025, at 6:00 PM (5:00 pm Executive Session).

VIII. Adjournment

No further business coming before the Board of Directors, the meeting was adjourned at 7:54PM.

Lido Isle Community Association
Board of Directors Meeting
Executive Session Meeting Minutes
Rescheduled: August 6, 2025 • 5:00pm

DIRECTORS PRESENT:		DIRECTORS ABSENT:
Alastair Fraser, President	Bill Kroener, Vice President	None
Ronda Clark, Secretary	Camille Rizko, Treasurer	
Joyce Boghosian, Director	Catherine O'Hara, Director	REALMANAGE:
Jeff Pence, Director	Sid Crossley, Director	George Ross AMS® CMCA® CCAM-LS®, General Manager
Alan Schneider, Director (arrived 5:41PM; departed 9:22PM)		

Executive Session Items. Per Civil Code § 4935, the board may adjourn to, or meet solely in, executive session to consider litigation, matters relating to the formation of contracts with third parties, member discipline, personnel matters, or to meet with a member, upon the member's request, regarding the member's payment of assessments.

I. Call to Order

The rescheduled August Executive Session of Lido Isle Community Association Board of Directors was called to order by President Alastair Fraser at 5:01PM; temporarily adjourned at 5:55PM and reconvened at 7:57PM.

II. Secretary's Report

Approval of Minutes

Resolution: A motion was made, seconded, and unanimously carried to approve the Minutes of the July 9, 2025, Executive Session as amended.

III. Legal

A. Litigation Management

- O'Brien Vs. Lido Isle Community Association.** - No action.
- Gilberto Howell v. Southwest Patrol, Inc., Citiguard, Inc., and Lido Isle.**
Resolution: A motion was made, seconded and unanimously carried that two weeks prior to the September Board Meeting the General Manager shall follow up with LICA attorney Amy R. Powell, Payne & Fears, for an update on the case and if there is no response the General Manager shall follow up bi-weekly.
- Tisha Sitzter v. LIYC, LICA, & individuals.** - No action.

B. AB130 now law – Fines reduced to a uniform \$100 - Resolution: A motion was made, seconded, and unanimously carried to adopt the California Law revision AB130 that became effective June 30, 2025, and to further discuss with LICA counsel David Cane Mr. Cane's draft revisions to Directive 31 to conform to the new law for publication to the members for 28-day comment prior to sending out to the committee. The City Relations Committee shall schedule a meeting with the appropriate City representatives and or Newport Beach Mayor to review the possible impacts of the law and discuss potential actions that the city is willing to do to address the issue.

Director Alan Schneider joined the Meeting after this motion was completed, at 9:22PM.

C. 761 Via Lido Nord – Complaint re Waziers Park - Resolution: A motion was made, seconded and unanimously carried to approve the selection of a surveyor to survey Waziers Park at a cost not to exceed \$3,000. The Administrative Committee shall coordinate with the General Manager to approve the selection the surveyor.

IV. Compliance:

A. Monthly Compliance Reports - No action.

B. 930 & 932 Via Lido Nord – property line installation of landscape screen causing view obstruction - No action.

C. Other Compliance Correspondence in the Current Period - No action.

V. Committee Reports




A. Tennis Court Windscreen Replacements - Resolution: A motion was made, seconded and unanimously carried to select ProSurface to install new windscreens at Jucar, San Remo and Barcelona courts at a cost not to exceed \$28,500.00.

LESLIE THOMPSON

PERSONALIZED SERVICE | PROVEN RESULTS

A leader in coastal real estate, Leslie Thompson is known for her professional work ethic and exceptional results. A Newport Beach resident for 25 years, Leslie has deep market knowledge and provides accurate market data – the key to a smooth transaction. With strategic positioning, Leslie guides with expertise and offers a pro-active approach, committed to her client’s success.

If you’re buying or selling, contact Leslie for your personalized approach.

 <div>260 CAGNEY LANE JUST SOLD Villa Balboa \$850,000 List Price</div>	 <div>105 VIA RAVENNA LEASED Lido Isle \$12,500 Furnished</div>	 <div>113 TOPAZ SOLD Balboa Island \$6,300,000 List Price</div>
---	---	---

LESLIE THOMPSON

949-945-8176 | leslie.thompson@compass.com
lesliethompsonhomes.com
DRE No. 01836958

Compass is a real estate broker licensed by the State of California and abides by Equal Housing Opportunity laws. License Number 01991620. All material presented herein is intended for informational purposes only and is compiled from sources deemed reliable but has not been verified. Changes in price, condition, sale or withdrawal may be made without notice. No statement is made as to accuracy of any description. All measurements and square footages are approximate.

Commitment | Integrity | Service

Providing exceptional results for 17 years.

COMPASS

B. Replace Clubhouse Rooftop HVAC Unit; Quarterly HVAC Maintenance Program - Resolution: A motion was made, seconded and unanimously carried to approve Marathon Air's proposal to replace the Clubhouse Rooftop HVAC unit situated above the office/Board Room at a cost not to exceed \$12,656.00 and to approve Marathon Air's proposal for quarterly inspections of the four Clubhouse HVAC Units for one year at a cost of \$505.00 per quarter.

C. Genoa East Dock – Replace hinges on launch ramps - Resolution: A motion was made, seconded and unanimously carried to select Swift Slip Dock and Pier Builders, at a cost not to exceed \$15,000.00, to replace two (2) hinges on the launch ramps of the Genoa East Dock.

D. Alternative Approaches to Performing Mass Mailings - Resolution: A motion was made, seconded and unanimously carried to approve the General Manager to select an outside vendor to prepare resident mailings at a cost not to exceed \$3,100.00 per mailing.

E. 3rd Party Use of the Common Area for Commercial Purposes – Resolution: A motion was made, seconded and unanimously carried that effective September 1, 2025, the Tennis Pro will be charged for court reservation fees for hours used for clinics, lessons and other court usage. There will be a review of this contract amendment at the end of the year.

The General Manager will coordinate with Women's Club to ensure that the Pilates and Yoga programs comply with insurance requirements and other use requirements for vendors' use of clubhouse facilities.

F. Security Upgrade proposal by Palmer Luckey - No action.

G. City lease agreements – interim status - No action.

H. 2026 Reserve Study Update Proposal - Resolution: A motion was made, seconded and unanimously carried to approved incumbent LICA reserve analyst Advanced Reserve Solutions' proposal to complete the 2026 Reserve Study update without site visit at a cost of \$2,750.00.

I. 2025 Year End Audit and Tax Services Proposals - Resolution: A motion was made, seconded and unanimously carried to hire Newman CPA to provide fiscal year 2025 audit and tax services at a cost of \$7,000.00.

VI. Delinquencies:

A. Delinquency Reports – No action.

B. Maxine Morrison, 103 Via Barcelona – Collection File Review – No action.

C. Ian Schenkel, 818 Via Lido Soud – Foreclosure Recommendation – No action.

D. Kimberly R. Russell, Rogers Family Trust, 103 Via Antibes – Request for waiver of fine and late fee – Resolution: Upon review of a written request by the owner for waiver of a fine in the amount of \$250 dated 1/30/25 and a late fee in the amount of \$204.37 dated

4/11/25, a motion was made, seconded and unanimously carried to waive the fine and late fee as requested.

VII. The Next Meeting:

The next LICA Board of Directors Executive Session Meeting is scheduled to be held on Wednesday, September 10, 2025, at 5:00PM at the LICA Clubhouse (6:00PM General Session).

VIII. Adjournment:

There being no further business to come before the Board of Directors Executive Session, the meeting is adjourned at 10:00PM.

Become an Advertiser in
The Islander®

The Lido Islander is Lido Isle's very own monthly newspaper. It is an excellent way to cost-effectively reach the exclusive audience of Lido Isle homeowners with your advertising message. First published in 1954, the Lido Islander reports on Lido resident and Club news, activities and Lido Isle Community Association business. The tabloid-sized Lido Islander is a big and bold vehicle for your ad, reaching over 870 households every month in the upscale Lido Isle community via both beautiful, full color print and digitally via email and our website.

AD OPTIONS (dimensions are WIDTH x HEIGHT):
1-sq. - \$50 per issue (Ad Size = 2.31 in x 2.31 in)
2-sq. - \$100 per issue (Ad Size = 4.875 in x 2.31 in)
4-sq. - \$200 per issue (Ad Size 4.875 in x 4.875 in)
6-sq. - \$300 per issue (Ad Size 4.875 in x 6.375 in)
8-sq. (1/4 Page) - \$400 per issue (Ad Size = 4.875 in x 8 in)
1/2 Page - \$600 per issue (Ad Size = 10 in x 8 in)
1/2 Page Vertical - \$600 per issue (Ad Size = 4.875 in x 16 in)
Full Page - \$1,200 per issue (Ad Size = 10 in x 16 in)

For questions, or to receive an Advertising Insertion Authorization form and reserve your ad space, contact the LICA office at islander@lidoisle.org, or call (949) 673-6170.

14

LIDO ISLANDER - OCTOBER 2025

LIDO ISLANDER - OCTOBER 2025

15



The
McCormick
Group

RECENT SALES



711 Via Lido Nord, Lido Isle
List Price: \$6,195,000 / Rep. Buyer



500 Via Lido Nord, Lido Isle
List Price: \$15,995,000 / Rep. Buyer



201 Via Cordova, Lido Isle
List Price: \$6,195,000 / Rep. Seller



924 Via Lido Nord, Lido Isle
List Price: \$19,750,000 / Rep. Seller



270 Cagney Ln #315, Newport Beach
List Price: \$1,095,000 / Rep. Buyer



817 Via Lido Nord, Lido Isle
List Price: \$3,495,000 / Rep. Seller



2113 Westminster Ave, Costa Mesa
Sold Price: \$2,000,000 / Rep. Buyer



Alison McCormick
Broker Associate / The McCormick Group

949.355.4104
amccormick@arborrealestate.com
McCormickGroupOC.com
DRE No. 00607959

