

PUBLISHED BY THE LIDO ISLE COMMUNITY ASSOCIATION

FEBRUARY 2020



It doesn't get much prettier than this...



If you grew up in Orange County like some of us did you have undoubtedly heard many reasons why someone wouldn't want to grow up anywhere else. Weather has to be top of most of our lists and even in a very chilly (for Southern California) winter, the beauty is beyond amazing.

The view of the snowcapped mountains, even our local Saddleback mountain across the bay, is spectacular! Where else in the world can you surf, sail, ski and enjoy the desert all in one weekend if you have the desire to do so? With no longer than a two hour drive you can experience all of the above and for most on less than a tank of gas.

Appreciating the unique lifestyle we all live on Lido, we should focus on the upcoming Board of Directors elections. For the first time, and perhaps the only time most of us can remember, we have more candidates than openings on the board. This is our opportunity to choose who will provide fresh perspective for our community while preserving the legacy we all respect. Who will be dedicated and willing to sacrifice the gift of time? Most importantly, who is the candidate that will choose, every time, what is best for our beautiful community and all 880 homeowners– never choosing personal gain, but instead thinking of the good for all?

*"The pessimist complains about the wind.
The optimist expects it to change.
The leader adjusts the sails."*

-John Maxwell



INSIDE THIS ISSUE:

Meet the Candidates Forum 3

Old Isle: Remembering Gourmet Grocers 3

An Update from Diane Dixon 4

LIWC: Home for the Holidays Recap 9

PRESORTED STANDARD
U.S. POSTAGE
PAID
Permit No. 60
Newport Beach, CA 92660

LIDO ISLE COMMUNITY ASSOCIATION
701 VIA LIDO SOUND
NEWPORT BEACH, CA 92663
CHANGE SERVICE REQUESTED



2019-2020 BOARD OF DIRECTORS:

Eric Henn - President
erichenn@icloud.com
Administrative Committee,
Finance Committee

Shana Conzelman - Vice President
sconzelman@gmail.com
Administrative Committee, Financial
Committee, Aviation Committee,
Communications/Website, Islander Liaison

Scott Obel - Treasurer
sobel@gmail.com
Finance Committee, Administrative
Committee, Insurance, Security,
Traffic Safety

Marion Smith - Secretary
newportmarion@hotmail.com
Administrative Committee, CC&R's &
By-Laws, City Relations, Landscape, LIWC

Leslie Thompson - Director
lmthomp2010@gmail.com
LITC, Clubhouse/snack bar,
Architectural Liaison

Dave Rahn - Director
drahn@att.net
MCIC

Mike O'Shea - Director
oshea17@gmail.com
Disaster Preparedness, Environmental,
Erosion (Beaches), LJM, LIYC

Marsha Ferrall - Director
marshaferrall@gmail.com
City Relations, Landscape, Special Events

Lawrie Cunningham - Director
ljcb123@yahoo.com
Landscape

Officers and Directors may be reached
through the Clubhouse office at 949.673.6170.

GRANDMANORS:

Shelly O'Sullivan, General Manager
Matt Bosma, Assistant Manager
Alanna Anderson, Administrative Assistant
Toni Vega, Weekend Administrative Assistant
Ron Westmark, Maintenance Technician

SECURITY BY PATROL ONE

LIDO ISLANDER® STAFF:

Shana Conzelman, Editor
Diana Miner, LIYC
Taylor Good, LJM
Jon Flagg, LITC
Margo Iverson, LIWC
Tiffany Hicks, Cornerstone Graphic Design
Western Lithographics Printing

OFFICERS - LIDO ISLE CLUBS:

Taylor Good, LJM President
Sid Crossley & Janice Walker, LITC Co-Presidents
Margo Iverson, LIWC President
Brian Benson, LIYC Commodore

Rate sheets for advertising by local businesses
and services of interest to Lido Isle residents
are available at the Clubhouse 949.673.6170.
Deadline for materials is the 12th of the month
prior to publication on a space available basis.

As an island paper for island residents, the
Lido Islander is always open for new features
of special interest to Lido Isle residents.
Articles, photos and artwork concerning
island community activities and events,
island personalities, history and nostalgia are
welcome. Material submitted for publication
should be in by the 12th of the month preceding
publication. Letters for the Lido Islander on
issues of interest to island residents may be
submitted to the LICA office for publication.
Brevity, clarity and propriety of subject matter
will be appreciated. Anonymous letters will not
be published.

Lido Islander® is a registered trademark of the
Lido Isle Community Association
© 2017 Lido Isle Community Association

LICA OFFICE HOURS:

Monday - Friday 8:00am - 5:00pm
Saturday & Sunday 10:00am - 4:00pm

For non-emergencies on LICA property, call
Patrol One at 949.367.8055 (press 6). For a Critical
Emergency at any hour, requiring police, fire or
paramedic response, CALL 911.



by Gail Reisman

Just Do It!

Join Lido's Emergency Response Team

- Volunteer to be a Block Captain.
- If you have medical/first aid training, volunteer to assist your injured neighbors.
- If you own a golf cart, volunteer to transport people and supplies following a disaster.
- If you are able, register for the Fire Department's CERT training.

This spring, there will be two separate CERT class series: Thursday day classes (beginning February 27) and all-day Saturday classes (beginning February 29).

Participants must register to attend one series but may take classes from the other series if they miss classes during their registered series. Attendance on the first day of class is mandatory to participate in the CERT program.

To register, you must complete an online application.

For a complete program schedule and application, www.nbcert.org.

Questions? email nbcert@nbfcd.net or call 949-644-3112.

All classes are held at Newport Beach Fire Station #7 (20401 Acacia). The CERT Program is available free of charge to Newport Beach residents and \$40 for non-residents.

To join our Lido team or for more information, call Gail Reisman at 673-4041 or email thegreisman@gmail.com



LIDO WOULD LIKE TO THANK THE CITY OF NEWPORT BEACH POLICE DEPARTMENT...

for their diligence in apprehending four criminals last month on our Island. They aren't called Newport's finest for nothing!

We salute these brave officers for putting their lives on the line each and every day for our safety.



Meet the Candidates FORUM

Wednesday, February 12, 2020
5:30pm - 6:30pm

As the upcoming Board of Directors Election is approaching, five director seats will be open in April 2020.

This year, there are more candidates than open Director seats.

Come hear what the candidates have to say!

In early February, you will be receiving the slate of candidates information and voting instructions.

Ballots will be mailed in early March.

**Annual Board Meeting
April 11, 2020**

LIDO ISLE SECURITY NEWS

BY MIKE POSTIL



LOCK EVERYTHING!

Hello Neighbors... I am going to keep this month's article brief and to the point. Are you doing the above consistently? If not, why?

It is very important that you lock everything 24/7. It does not matter what time of day it is either. Your home, the valuables inside your home, your vehicle(s), bikes, SUP's, boats, surfboards, etc., all need to be locked. Your garage door needs to be closed as well. This is not a guarantee that thieves will not attempt to take something you value but we all need to harden potential opportunities of interest. Also, it is advised to remove all items from your vehicle or at least hide them properly if you are in transition. Of course, lock your vehicle as well. Another suggestion is to avoid posting your trips on social media until you return home. Do not alert individuals you are out of town. Finally, employ your situational awareness. Pay attention to your surroundings. If something does not seem right, report it.

All the best and be safe. — Mike

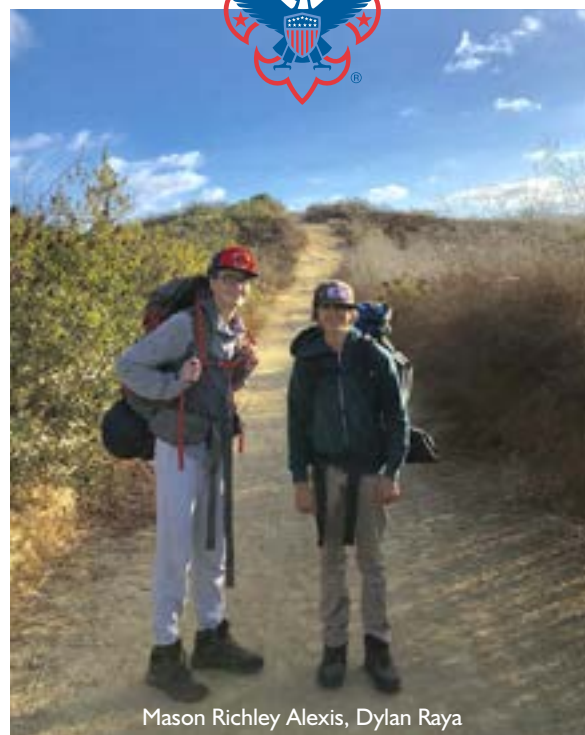
CONSTRUCTION ON LIDO

Please be courteous when expressing your frustration with the neverending construction projects on Lido. Remembering that the homeowners association and property management company, Grand Manors, is not responsible for managing or disciplining issues with inappropriate actions of contractors. The responsibility to control and manage construction should be reported to:

John Murray - Code Enforcement Officer
City of Newport Beach Code Enforcement
949-270-8137 • jmurray@newportbeachca.gov



Death Valley & the Red Rope Challenge



Mason Richley Alexis, Dylan Raya

Hello Lido! This is your Troop 37 columnist, Mason Richley Alexis. The month of January was brimming with exciting adventures and activities alike. Our latest campout in Death Valley was a great success. The two-night campout provided a great opportunity for scouts to learn more about desert survival skills and work on multiple merit badges, including wilderness survival, cooking, and hiking. Furthermore, our troop will be focusing on mastering our knot tying techniques through the Red Rope Challenge. This unique challenge requires scouts to tie 14 knots in less than 1 minute. The knots would include the square knot, the bowline, and the taut-line hitch, which are also used in sailing. Overall, the month of January has been excellent, and we all look forward to more thrilling adventures ahead of us in the coming months. Thank you for your continued support, and we hope you tune in for next month's article.

Old Isle

By Carol Mason

REMEMBERING GOURMET GROCERS

It's hard to believe that up until the 1970s or so, Lido Isle residents had a choice of two unique and upscale grocery stores, right in our own Lido Village. Richard's Market, the superstar market which thrived in the space now occupied by West Marine (and then some) had a comprehensive, unique and stylish selection of goods and services, ranging from a liquor store, gift shop, florist and according to an ad unearthed by Old Isle... ice carvings, ready to go for an impromptu party!!! While we are lucky in the 21st century to have everything just a click away on Amazon, I don't believe that covers ice carvings...yet. And if this isn't enough, in later years, Richard's was joined by the small and chic southern California grocers, Jurgensen's. Located in various upscale locations from Pasadena to Santa Barbara, the store featured a butcher and in-house bakery (and Old Isle has a vague recollection of some great ginger cookies...). The photo of the Lido Village location at 3431 Via Oporto shows that Jurgensen's took up the ground floor of the building where Sweaty Betty and Broken English are currently located. And here's hoping that some great grocery outlet might take the plunge again in serving Lido Isle residents.



You might just be able to make out the Jurgensen's name on the awnings of their former Lido Village location.



A newspaper ad touting Richard's Ice carvings for all occasions.

WELCOME NEW LIDO ISLE NEIGHBORS

Capellini 310 Via Lido Soud	Sumter & Chi-Lin Pendergrast 121 Via Waziers
Brian Scott & Laura Weiss 119 Via Koron	Hafizah Shahryar 317 Via Lido Nord
Roger & Tammy Gaw 447 Via Lido Soud	

WOULD YOU BE my valentine?

An Update From Diane Dixon



Dear Neighbors,

General Plan Update. The City has been preparing to update its General Plan, the document that provides the framework for decision-making regarding the future land management and growth of our community. Our approach was to first spend a good amount of time listening to residents about their vision for Newport Beach and then start the formal, public process for updating the General Plan. On December 12, about 50 residents attended the District I "Listen and Learn" community meeting at Marina Park to participate in this community-wide engagement and learn about recent state mandates that will impact our city. While the community engagement effort will continue into the coming months as planned, the recently proposed state mandates concerning the region's housing needs is impacting the timing and structure of the General Plan Update.

The changes have to do with a section of the General Plan called the Housing Element. Among other things, State law says our Housing Element must identify adequate sites that are zoned and available within the seven-year housing cycle to meet the city's fair share of regional housing needs. So what is our fair share? Much more than we anticipated.

The State determines the housing numbers through the Regional Housing Needs Allocation (RHNA). The RHNA, in turn, is apportioned to cities through a process overseen by the Southern California Association of Governments (SCAG).

We expected Newport Beach's allocation to increase given the statewide shortage of housing, particularly affordable housing. We did not, however, expect it to increase nearly 57 percent. In early November, the County of Riverside proposed an alternative methodology that redistributes regional housing units from inland to coastal areas. SCAG's Regional Council approved the change and with it, Newport Beach's recommended allocation went from 2,751 units to 4,832 units. The California Department of Housing and Community Development (HCD) has the final say and we are awaiting its decision on the methodology and our city's housing allocation.

Planning and zoning for 4,832 units will be an enormous task for Newport Beach. The City's work on updating the Housing Element will now start in advance of the full General Plan Update as the State says it must be completed by mid-October 2021. City staff is currently developing an action plan for addressing Newport Beach's draft RHNA allocation that will be considered by the City Council in January.

Please be on the lookout for continued community engagement opportunities. It is imperative that our residents are fully informed of the state's mandated housing requirements and the impact on our City.

Diane

"Jewelry designed by women for women." - Myriam Gumuchian
Shop local and find it at Blackman Ltd. Jewelers.

BLACKMAN LTD.
FINE JEWELRY AND GIFTS EST. 1957

3388 Via Lido Newport Beach Tel 949-673-9334
www.blackmanltd.com info@blackmanltd.com



530 VIA LIDO NORD, LIDO ISLE | IN ESCROW



121 VIA UNDINE, LIDO ISLE | NEW LISTING
\$2,495,000



224 VIA ITHACA, LIDO ISLE
LEASED



328 POPPY AVE, CORONA DEL MAR
SOLD | \$2,700,000



VIA WAZIERS, LIDO ISLE
COMING SOON
Full Remodel - Amazing Finishes



423 VIA LIDO SOUD, LIDO ISLE
LEASED



MARILYN READ

CalRE#00981786
949.632.2494
marilyn.read@camoves.com
LidoIsleProperties.com



The property information herein is derived from various sources that may include, but not be limited to, county records and the Multiple Listing Service, and it may include approximations. Although the information is believed to be accurate, it is not warranted and you should not rely upon it without personal verification. Real estate agents affiliated with Coldwell Banker Residential Brokerage are independent contractor agents and are not employees of the Company. ©2020 Coldwell Banker Residential Brokerage. All Rights Reserved. Coldwell Banker Residential Brokerage fully supports the principles of the Fair Housing Act and the Equal Opportunity Act. Owned by a subsidiary of NRT LLC. Coldwell Banker, the Coldwell Banker Logo, Coldwell Banker Global Luxury and the Coldwell Banker Global Luxury logo service marks are registered or pending registrations owned by Coldwell Banker Real Estate LLC. (17623765)

What's happening with the San Remo Tennis Courts?

By: Dave Rahn, LICA Board Member and Chair of the MCIC

This is a great well intentioned question I hear frequently. The tennis facility was initially closed to provide for the safety of the tennis players when it was necessary to replace several seriously deteriorated tennis fence posts by the new CERT/Garage building and to allow for the building's construction.

Unfortunately, this relatively simple task has grown in complexity because of major safety hazards discovered during the hand removal of the landscaping along Triste. The discovery was that the metal conduit containing many of the wires for powering San Remo Park and the tennis facility are severely corroded and in places had "turned to dust". This is true for the power coming from the Edison's source vault to our meter, from our meter to the tennis facility and the demolished CERT building and the old park's perimeter electrical system. Essentially, we discovered unprotected 220 and 110 volt power wires buried in the ground. We also found an electrical line providing power to the gate locks was damaged and improperly installed on the ground surface using PVC conduit. It was also identified that LICA's power panel and meter do not meet the City's and Edison's requirements and it was improperly and dangerously attached to the tennis court fence. These findings make it necessary to replace all the combined facilities electrical system conduits and wiring and upgrade, and possibly move, the panel and meter.

The expense for doing this in the park is part of its approved budget. The expense for doing this work at the tennis facility is not part of the current San Remo Park budget, but fortunately, the LICA Board has previously allocated what we believe, at this time, is sufficient reserve funding for these tennis improvements in our 2020 budget.

Fixing these hazards is not simple. It requires close coordination with Edison, the City of Newport Beach, LICA and our San Remo contractor.



Currently Edison is conducting its due diligence to locate which of its power vaults near the facilities contain the power line to LICA's meter, where this meter will be located in the future and how it will be housed. The standard time that Edison allots to this process is 45 days. The Board is committed to making the San Remo Tennis facility a great venue and is using this experience as a model for how to manage needed improvements at our other courts in the future. LICA is in the process of hiring a lighting consultant to advise on the best placement of the new tennis lighting poles, which pole designs are best and which new LED lighting fixtures are best for tennis play and don't bleed light into homes adjacent to the courts. Our contractor is constantly revising his work schedule for San Remo to keep moving forward in light of these conditions.

Never-the-less it is very likely that our initial completion dates will not be achieved. All of the principals mentioned are all working hard to open the park and the tennis facility as soon as possible. Our goal remains to produce two venues that enhance our great Lido Isle lifestyle and incorporating input from the tennis club as possible. Our San Remo MCIC team and contractors takes great comfort in our discovery of these significant hazards before someone got hurt by them on LICA property.

PUT THE PROVEN RESULTS OF THE BRADSHAW RESIDENTIAL GROUP TO WORK FOR YOU.
BRADSHAWRESIDENTIALGROUP.COM/REMODEL



FROM CONCEPT TO REALITY THE BRADSHAW RESIDENTIAL GROUP HAS PROVEN RESULTS WHETHER REMODELING, STAGING OR MARKETING TO GET YOU MORE VALUE FOR YOUR HOME.



CRYSTAL COVE | COMING SOON | \$3,179,000



NEWPORT COAST POOL HOME | COMING SOON | \$3,189,000



1701STARLIGHT.COM, NEWPORT BEACH | \$2,495,000



26 SEABLUFF HIGHEST SOLD IN BONITA CANYON COMMUNITY | \$4,075,000



JASON C. BRADSHAW

CalRE# 01304396
949.433.3001
Jason@BradshawResidential.com



GLOBAL LUXURY

COLDWELL BANKER RESIDENTIAL BROKERAGE



DIANA MINER

CalRE# 01919429
949.394.6212
Diana@BradshawResidential.com

The property information herein is derived from various sources that may include, but not be limited to, county records and the Multiple Listing Service, and it may include approximations. Although the information is believed to be accurate, it is not warranted and you should not rely upon it without personal verification. Real estate agents affiliated with Coldwell Banker Residential Brokerage are independent contractor agents and are not employees of the Company. ©2020 Coldwell Banker Residential Brokerage. All Rights Reserved. Coldwell Banker Residential Brokerage fully supports the principles of the Fair Housing Act and the Equal Opportunity Act. Owned by a subsidiary of NRT LLC. Coldwell Banker, the Coldwell Banker Logo, Coldwell Banker Global Luxury and the Coldwell Banker Global Luxury logo service marks are registered or pending registrations owned by Coldwell Banker Real Estate LLC. (17663840)

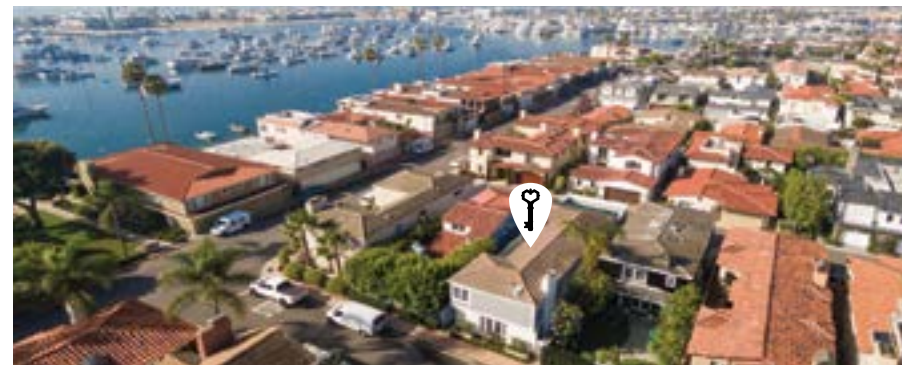
LIVE THE LIDO LIFESTYLE



215 VIA GENOA
Offered at \$3,650,000



107 VIA KORON | NEW LISTING
Offered at \$3,150,000



OLGA MATTHEWS
949 922 5577
OMATTHEWS@VILLAREALESTATE.COM
DRE No. 00483564

*Serving the coastal communities
for the past 30 years.*

LIYC NEWS



Brooke Sharp
Sailing Director, LIYC

A Junior Sailing Director is Arriving Soon!

For those of you who may not know, my husband Jesse and I are expecting a little girl due February 23rd. We are so excited for this next chapter and so grateful for the love and support that Lido Isle Yacht Club has shown us. We are so lucky to have such a great group of people surrounding us as we head into parenthood and can't thank you all enough for the words of advice and encouragement.

I will be taking maternity leave from late February through April but don't worry, I am leaving you in the very capable hands of a long-time Lido sailor Jack Thompson. Jack has agreed to join LIYC as the Assistant Sailing Director and will act as interim director while I'm on leave. He has a long history with LIYC through both participation in the program as a junior sailor and later as a coach. Jack sailed competitively with the College of Charleston and brings a wealth of knowledge to the Junior Program. He will be running the Spring Program which starts March 20th through May 15th – don't forget to sign up today! If you see Jack around, please stop and introduce yourself. In the interim, don't be concerned, we've already started planning Summer 2020 and I plan to be back in time for another great summer at Lido with a baby girl in tow!



BABY ON THE WAY!



Jack Thompson
Interim Sailing Director

Best,

Brooke Sharp
Sailing Director, LIYC
sailingdirector@liyc.net

Commodore's Corner

Brian Benson
Commodore, LIYC

Happy New Year everyone! You have heard from me before, but this is my first time writing the Commodore's Corner, as the actual Commodore. There is no more Vice about it, I am all in; and proud to be your new Commodore.

I would like to take this opportunity to introduce you to two new flag officers. Together they are both my right and left arms. They are, Vice Commodore Alison Witton and Rear Commodore John Clement.

Allison is ideally suited to her new role. She is an accomplished sailor, having competed in many Newport Bermuda Races. I have not done this race myself, but I have made the over 630 mile sail, and I can tell you it is mentally and physically challenging. Her daughter Grace is in our junior sailing program. Allison has also served on the Sailing Committee several years. Allison's husband, Karl serves as our Fleet Captain.

John is a true boater with a lot of Corinthian spirit. He owns and races a Harbor 20. He owns and cruises a very nice Duffy. And, if rumors are correct, he may soon be part of a challenge team to compete in the next TransPac Race. John's wife, Elizabeth serves as our Sr. Treasurer.

Both Allison and John are well-organized, thoughtful individuals that I know will add a great deal to our Club. They are both members of larger yacht clubs, but rather than sit back and let others do the work – they have stepped up to give their time to make Lido Isle Yacht Club the best it can be. I am so lucky to serve with them by my side. Please give them your support and volunteer to help as much as you can. Together we will make 2020 another fun Lido year.

Harbor 20 Adult Sailing Clinics

Presented by LIYC and Fleet 1

- Learn to Sail
- Learn to Race
- Meet New Friends!

Space is limited so sign up early!!!

FINALLY YOU CAN CRUISE THE BAY WITH CONFIDENCE!

CLINIC GOALS:	CLINIC FEES	CLINIC DATES
<ul style="list-style-type: none"> Learn boat handling skills Learn hands on sailing techniques Race competitively in the Bay Improve your current skills 	\$50 per person, per clinic OR \$120 for full series	Saturday, February 8 th Saturday, March 14 th Saturday, April 11 th Saturday, May 23 rd
Experienced sailors from Fleet 1 in their own Harbor 20 sailboats will mentor and lead you through the clinics. Lunches, Snacks, and Drinks Included!! Sign up online at LIYC.net or make checks payable to LIYC and mail to 701 Via Lido Soud, Newport Beach, CA 92663. Space is limited by availability of boats, so please sign up right away! Payments must be received at least one week before the start of each clinic.	CLINIC TIMES: 9am to 4pm each day	

Contact Bob Yates at bob.yates@roadrunner.com for any questions or email info@liyc.net for more information.

Open to all Lido Isle Yacht Club Members and all regional yacht club members.

Viking

Exploring the World in Comfort®

Vice Commodore Brian Benson invites you to join the

LIYC 2020 CRUISE

OCTOBER 3-10, 2020
8 DAY: CHATEAUX, RIVERS & WINE
CRUISE WITH VIKING RIVER CRUISES

ALL-INCLUSIVE LUXURY: 190 passengers

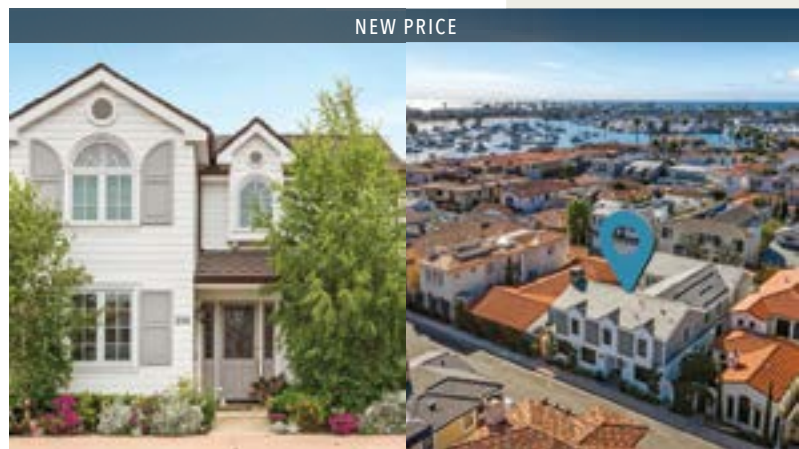
- Fares include river-view staterooms, all port taxes & fees
- All onboard meals including regional specialties, wine, beer, soft drink, specialty coffees, teas & bottled water
- Unlimited free Wi-Fi
- Onboard Enrichment:** wine tasting, lectures, musical performances, craft & cooking demonstrations
- 7 guided tours with audio headset – Visit 3 UNESCO World Heritage Sites
- Scenic cruising along the rivers of Aquitaine
- Culture Curriculum:** Sample Bordeaux wines, Participate in classes from a master sommelier.

CONTACT ME TO BOOK IN OUR GROUP WITH EXCLUSIVE LIYC FARES:
Starting at \$2674 per person
 MARION SMITH 949.701.8286 NewportMarion@GMAIL.com

Fares are cruise only, per guest, based on double occupancy & availability. Prices and itineraries are based on availability and subject to change until deposit is made. Airfare can be arranged. Travel insurance recommended. We welcome all past Viking Cruiser too! CST#2053942-40



LIDO ISLE | 545 VIA LIDO NORD | 4-BR, 4.5-BA | APPROX. 4,069 SF | \$3,575,000



LIDO ISLE | 208 VIA ORVIETO | 4-BR, 4.5-BA | APPROX. 3,000 SF | \$3,595,000



LIDO ISLE | 434 VIA LIDO NORD | 5-BR, 5-BA | APPROX. 2,973 SF | \$9,500/MO



NEWPORT BEACH | 323 VISTA SUERTE | 4-BR, 2.5-BA | APPROX. 2,648 SF | \$1,624,900

THE McCORMICK GROUP

2020



LIDO ISLE | 119 VIA KORON | 5-BR, 4.5-BA | APPROX. 4,634 SF | \$3,750,000

Whether you are buying, selling, relocating, or investing, working with the right real estate professional is crucial to ensuring a smooth and successful transaction. Call me today!



ALISON MCCORMICK
THE MCCORMICK GROUP
Broker Associate
M: 949.355.4104
ALISON.MCCORMICK@ELLIMAN.COM
DRE# 00607959



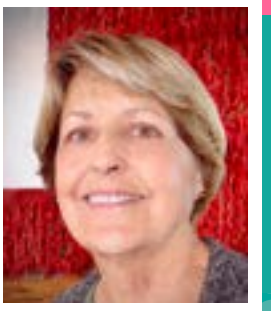
12 CORPORATE PLAZA SUITE 250, NEWPORT BEACH, CA 92660

150 EL CAMINO DRIVE, BEVERLY HILLS, CA 90212. 310.595.3888 © 2020 DOUGLAS ELLIMAN REAL ESTATE. ALL MATERIAL PRESENTED HEREIN IS INTENDED FOR INFORMATION PURPOSES ONLY. WHILE THIS INFORMATION IS BELIEVED TO BE CORRECT, IT IS REPRESENTED SUBJECT TO ERRORS, OMISSIONS, CHANGES OR WITHDRAWAL WITHOUT NOTICE. ALL PROPERTY INFORMATION, INCLUDING, BUT NOT LIMITED TO SQUARE FOOTAGE, ROOM COUNT, NUMBER OF BEDROOMS AND THE SCHOOL DISTRICT IN PROPERTY LISTINGS SHOULD BE VERIFIED BY YOUR OWN ATTORNEY, ARCHITECT OR ZONING EXPERT. IF YOUR PROPERTY IS CURRENTLY LISTED WITH ANOTHER REAL ESTATE BROKER, PLEASE DISREGARD THIS OFFER. IT IS NOT OUR INTENTION TO SOLICIT THE OFFERINGS OF OTHER REAL ESTATE BROKERS. WE COOPERATE WITH THEM FULLY. EQUAL HOUSING OPPORTUNITY.



February 2020

LIWC President:
Margo Iverson



Thank you for making
Home for the Holidays
a wonderful success!

Neither clouds nor rain could stop the more than 300 people from supporting the **15th Annual Home for the Holidays**, honoring Lenore Butcher and benefiting **Hoag Family Cancer Institute**.

Russ Butcher rounded up golf carts and drivers, **Fred Roman, Jerry Hawthorne, Ken Wirgler, Eric Auckerman, Jay Leonard, Michael O'Shea, Dennis O'Hern, Wayne Graveline & Steve Paquette** to shuttle attendees around to 4 featured homes and the Lido Isle Clubhouse. Beautifully decorated in breathtaking holiday style, **The Baileys, The Dobrotts, The Kinnings, and The Littlefairs** graciously opened their homes for all to see!



▲ Karen Littlefair, Diana Miner and Shana Conzelman stand together with appreciation and pride for the amazing volunteers that make this event a success year after year!

The Garden Room was truly transformed into a Winter Wonderland! Once again generously decorated and underwritten by **Shana & Mark Conzelman**, with Chiavari chairs, tables with holidays linens adorned with marble-based tray centerpieces topped with Santa, trees, & reindeers which were all successfully sold! A delectable buffet lunch was prepared & supported by **Annie Morgan of Backstage Affair** and beverage service from **Sabastian Dahbour of Sabastian Service Co.**

The Bay Room had amazing boutique vendors including, **A Perfect Compliment, Bella Leigh, Cason Couture, Chandelier Sheets, Classy Bag Lady, Duchess of Pearls, Jacqueline B, Jules Boutique, IP Garden Works, Lavender Blue, LeVai Chocolat, Lolly Rose Bakery, M Street Artwork, Naked Cashmere, Oh Fudge, Pearls, Towel Trends, and Vintage Pepper.**

Opportunity Chance prizes were donated and many very fortunate Lido residents had winning tickets... Carol Poe, Jerry Hawthorne, Karen Duncan, and Sonja Gray.

It took a tremendous effort and many months of planning and we thank the Lido Isle Women's Charitable Foundation committee consisting of Nancy Arnold, Debbie Benedict, Shana Conzelman, Karen Littlefair, Diana Miner, Jenna Roman & Lee Warden.

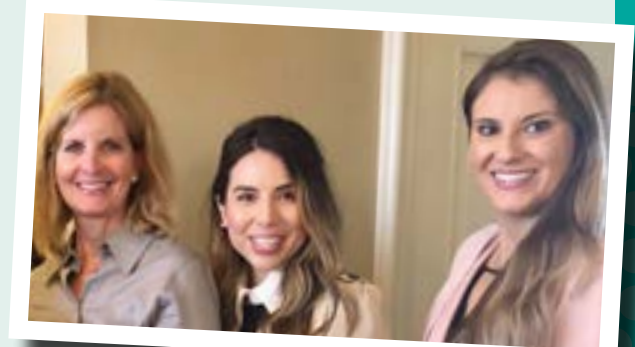


▲ Russ Butcher, Fred Roman, Steve Paquette and Ken Wirgler stand in remembrance of Leonore Butcher



◀ Check it out and Check it in

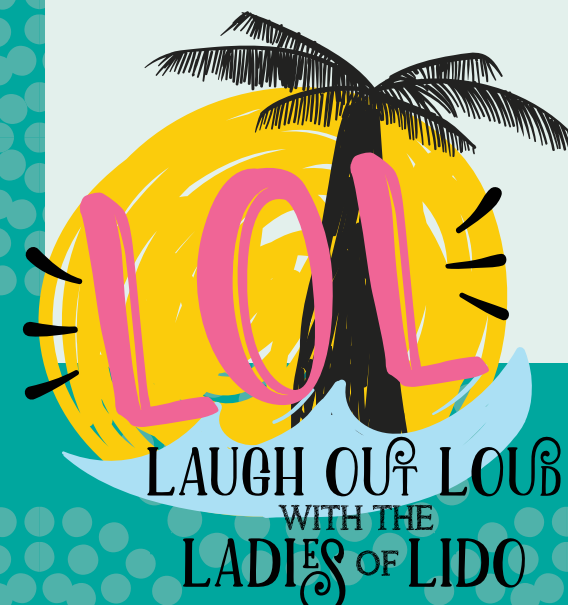
The event would not be possible without the volunteers from the Lido Isle Women's Club members & friends: Andrea Denno, Elizabeth Clement, Delia Delgado, Ilona Martin, Leslie Thompson Kim Nicholas, DeeDee McCutchan, Diana James, Jaime Kitzmiller, Mary Manno, Maureen Ramer, Wendy Stark, Tisha Sitzer, Joelle Hamontree, Eva Simpson, Betsey Decker, Gloria Parker, Sossi Palanjian, Marsha Ferrall, Roann Turk, Kim Cosenza, Stephanie Rados, Corky Winters, Michelle Apramian, Liana Cronin, Ellyne Warsaw, Tammy McKennon, Joyce Pais-Chambers, Denise Benson, Gail Pollard, Kathy Dannis, Lori O'Shea, Sherri Moore, Angie Barrie, Suzie Hyman, Lurline Twist, Margo Iverson, Jan Wirgler, Lisa Johnson, Cathy Henn, Carla Anderson, Cathie O'Neil, Alice Brewer, Juli Ackerman, Donna Shockley, Libby Huyck, Christine Lacy, Johanna Roe, Judy Becker, Alex Chebil, Jane Della Grotta, Sally Holt, Susan Finney, Sandy Abrahamian, Gail Reisman, Varla Knauss, Peggy Grodach, Sally Werlin, Joan Damask, Gail Anderson, Nancy Wimer, Polly Millspaugh, Kathy Sangster, Connie Cunningham, Marion Smith, Sue Binkerd, Debbie Benedict, Shauna Oyler, Kris Mungo, Jen Rodgers, Karen Treaccar, Carol Poe, Barbara Wall, Ida Middlesworth, Sharon Pence, Jan Hawthorne, Susan Lockard, Diane Williams & Sharon Wright.



▲ Gwen, Katherine & Dori from the Hoag Family Cancer Institute

A volunteer party is being coordinated at which time a check will be presented to Katherine Duarte and Gwen Ritter of the Hoag Family Cancer Institute. We are soo thankful to everyone that participated to the great success of the event!

Diana Miner,
Founder of the Lido Isle Women's Charitable Foundation



Calling All Moms & Dads!

The Bunny Party will be here before you know it! We are in need of volunteers to help (organize, check in, set up, clean up, etc) plan this children's event, scheduled for April 5th. This has been a popular event in the past and it takes a lot of hands from start to finish. If you can help, please contact Lee Warden at 949-423-7009.





CAMP LIDO 2020

MORGAN RUN RESORT, APRIL 24 – 26TH

The LITC has another amazing CAMP LIDO planned for 2020 and you will not want to miss. It's a short trek to Morgan Run Resort in beautiful Rancho Santa Fe, so getting there is easy. Tim O'Neil and the rest of the Tennis Club Board has a great weekend of tennis, golf and activities planned. Morgan Run Resort has 11 tennis courts, 27 holes of championship golf, a world-class spa and salon, complete gym and fitness center with yoga and pilates, pool and jacuzzi plus quality restaurants and lounges. The tentative schedule calls for Friday golf and enjoyment, Saturday tennis, pool-time, shopping and, a group awards dinner in the evening and more activities on Sunday. This event does fill-up, so please book your room and reservations now. To reserve your room call 858 756 2471 and tell the resort you are with the LIDO ISLE TENNIS CLUB. Rooms are \$144 plus tax per evening, which includes resort fees, and upgrades to golf course view rooms are available for \$20 additional. For questions, please contact Tim O'Neil at 626 274 9914.

Membership Drive 2020 JOIN THE LITC OR RENEW YOUR MEMBERSHIP

The San Remo tennis court was constructed in 1938, followed shortly thereafter by the Barcelona court with the first known tournament held in 1948. The LIDO ISLE TENNIS CLUB formed in 1953 and has been running strong ever since, promoting tournaments, junior tennis, ladies' teams, the tennis instruction program and various other events in order to ensure a vibrant tennis program for the Lido residents that are fond of the sport. Ultimately, having a thriving, organized club is an asset to the island. The LIDO ISLE TENNIS CLUB is looking to continue to improve and welcomes all residents to support the club, utilize the courts and participate in the programs and events that are offered to all ages and abilities. As you can see by the 2020 calendar of events, the LITC has some great events planned and are hoping you will join in the fun. The MEMBERSHIP FEE FOR THE ENTIRE YEAR IS ONLY \$80, which makes it the best deal in town. You can simply show it to the monthly Social On Sunday to eat and drink your membership dues back. But the club offers so much more and would love to see you as a part of this great tradition. For membership questions, please contact Janice Walker at 949 675-1041 or bwj2@hotmail.com to get any of your questions answered. Get your checks in soon in order to be included in the membership directory.

Tennis Tip:

Throw a football to help your serve. The serve is a lot like a throwing motion. Weight transfer, the proper arm motion and wrist pronation can be learned from throwing the ball up in the air.

PICKLEBALL on Lido Isle

This is the sport, which is an offshoot of tennis, that is sweeping the nation and becoming extremely popular. The LITC now has made this great time available to you. There is a Pickleball court painted on the basketball court at Via Jucar with everything that you need (net, paddles, balls) locked in a small storage box on the on the backboard/hitting area at the Via Jucar tennis court. Contact Sid Crossley for more details – sidcrossley@gmail.com

SOS - "Social on Sunday"

SUNDAY, FEBRUARY 16, 2020

BARCELONA TENNIS COURT, 12-4pm

The first SOS of the decade is here! Come out and enjoy a beautiful afternoon at the BARCELONA tennis court hitting a few balls, relaxing and experiencing the friendship of your neighbors. During the reconstruction of the San Remo park, the SOS will be held on the Barcelona court. The January LITC SOS will be held between 12 and 4pm, so start the year off living up to your resolution of getting outdoors and exercising. Feel free to arrive at any time, work up a sweat after your festive holiday season. The SOCIAL ON SUNDAY will have a lively spirit, wonderful food and fine refreshments. If you have yet to participate in a LITC SOS – the time is now! Eat, drink and socialize while participating in some mildly competitive, friendly tennis with an emphasis on fun. If you don't wish to play in this very social format, no problem, just come out, feast away and enjoy some camaraderie with your neighbors. Simply show up at the court with (or without) your racket, it's an easy way to have a bit of fun. Play as much or as little as you'd like. Please grab a friend or family member on the way over. If you are considering joining the LITC for the first time, this is a great way to give it a test drive. The SOS is a monthly event, held on the third Sunday, hosted by the LITC and all members plus their guests are welcome. Doubles and mixed doubles and even some pickleball may be featured. A special thanks to TAYLOR GOOD, who also doubles and the Lido Isle Men's Club president for hosting a wonderful, intimate December SOS.

TENNIS LESSONS on Lido

Margie Mateljan, Robbie Reenan and Mike Lindsey are available for lessons year-round. Summer may be nearing an end but it's all-year activity on this great island and this great game. Take advantage of one of Lido's best assets, our fantastic tennis facilities and professional instructors. Tennis lessons are available with USPTA certified pro Margie Mateljan and her assistants Robbie Reenan and Mike Lindsey. The staff is available for any type of instruction you are looking for. They teach private and group lessons. Please contact Margie 949-233-5670 if you are interested. Sign you or your child up today. All levels are welcome!

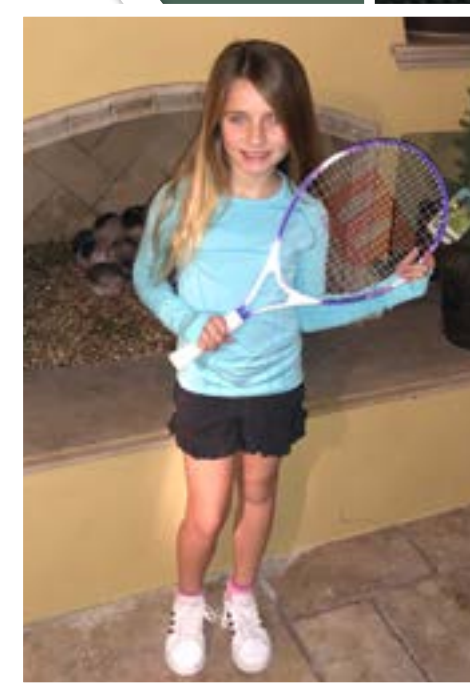
2020 LITC EVENT CALENDAR

Sunday	2/16/20	SOS		12-4pm
Sunday	3/1/20	Tournament		11-3pm
Sunday	3/15/20	SOS		12-4pm
Sunday	4/19/20	SOS		12-4pm
Fri-Sun	4/24-26	Camp Lido		
Sunday	5/17/20	Night SOS		4-8pm
Sunday	6/14/20	Night SOS	San Remo	4-8pm
Sunday	6/28/20	Tournament	All Courts	11-3pm
Saturday	7/4/20	July 4th Parade	Clubhouse	10:00am
Sunday	7/19/20	Night SOS	San Remo	4-8pm
Sunday	8/16/20	Night SOS	San Remo	4-8pm
Sunday	9/20/20	Night SOS	San Remo	4-8pm
Sunday	10/18/20	Night SOS	San Remo	4-8pm
Friday	11/6/20	Tennis Party	Clubhouse	6-10pm
Sunday	11/15/20	SOS	San Remo	12-4pm
Sunday	12/13/20	SOS	San Remo	12-4pm

Margie's Corner:

Junior of the Month: Capri DeAngelo

Capri DeAngelo is a 3rd grader at Mariners Christian School. She loves playing tennis on Lido where she has lived her entire life. Capri is a good little athlete and a lot of fun! She plays soccer and rides quarter horses. She has a horse named Spoons and loves chocolate. Capri is a confident, happy, outgoing girl that is a joy to have on the court. Capri's favorite thing about tennis is her topspin backhand. Way to go Catalina!



JUNIOR TENNIS FUN -
Stone Florie, Barnes Martin, Tovi Polenzani,
Capri DeAngelo, Catherine Jones and
Lucy Meehan hiding from Margie

Taylor Good, LIMC President

LIDO ISLE MEN'S CLUB EST. 1998

WHEN THE TIDE IS LOW, THE MEN WILL GO...

by Mike O'Shea

Keep your eyes open for a low tide Spring day, grab your waders, trash bag, rakes and join the monthly 'Save our Bay' campaign. The Men's Club will be choosing the optimal conditions this Spring and will notify all to join together to clean up our bay.

"Membership in Men's Club is as always welcome and life is no better than knowing our neighbors."

— Mike O'Shea

If you would like to join our Men's Club, please email tg@taylorgood.com.



SAILHOUSE



210 & 210.5 ORANGE STREET | NEWPORT BEACH
UNDER CONSTRUCTION | AVAILABLE EARLY 2020
FOR SALE OR LEASE

info@sailhouse.com
949.281.6044

sailhouse.com

Sailhouse Homes, Inc.
LIC#1007531 - DRE# 01199815

PERSONAL INJURY

Law Offices of John Rapillo
Representing Injury Victims Since 1978

2700 NEWPORT BOULEVARD, SUITE 172
NEWPORT BEACH

(949) 675.5060 • www.rapillolaw.com

CROSS-ISLE PUZZLE

Across	Solution
2. Love	1. Holding Hands
4. Cards	3. Mayor
5. Dates	6. Sweethearts
8. Regatta	7. Strawberries
9. Bouquet	10. Brian Benson
11. Cupid	
12. Secret Admirer	
13. Kiss	
14. One	

Lido Isle Community Association Board of Directors Meeting - December 11, 2019

BOARD MEMBERS PRESENT:

Eric Henn, President
Shana Conzelman, Vice President
Marion Smith, Secretary
Scott Obel, Treasurer
Mike O'Shea, Director
Leslie Thompson, Director
Dave Rahn, Director

NOT PRESENT:

Leland Iverson, Director
Marsha Ferrall, Director

ALSO PRESENT:

Shelly O'Sullivan, General Manager

Call to Order: President, Eric Henn called the meeting to order at 6:15 pm.

Homeowners Forum

Three owners attended. One owner wanted the minutes to be published in draft form and immediately published in the islander vs waiting until the minutes are approved and published 2 months old. It was reiterated that the minutes are available on the web portal immediately after approval and owners can request a copy from management. Owner wants to pay for one of the trees already scheduled for the San Remo landscape design. This tree and plaque will be in loving memory of his wife. One owner is requesting a variance to apply a new non approved roofing material.

Executive Session Summary

Authorization was given to Dave Rahn to discuss with the City of Newport Beach the removal of existing San Remo Park chain link fence and replacing it with a green screen fence. This 12' high green screen fence will allow foliage to grow within the barrier for a pleasing look and will be a safe barrier for the residence bordering the park.

Secretary's Report

November 11, 2019 Board Meeting Minutes

"Be it resolved: To approve the November 11, 2019 Board Meeting minutes as submitted." Moved, Seconded, Carried 7-0

November 11, 2019 Executive Session Board Meeting Minutes

"Be it resolved: To approve the November 11, 2019 Executive Session Board Meeting minutes as submitted." Moved, Seconded, Carried 7-0

Treasurer's Report

#4467 Account

"Be it resolved: To reverse the \$620 balance on owner Account #4467 ledger, due to assessed incorrectly for boat storage." Moved, Seconded Carried 7-0

There are some discrepancies from Diversified Managements financial book keeping. As a result GrandManors is working with the individuals to obtain proof with cancelled check documentation.

"Be it resolved: To grant permission to GrandManors to write off past due balances, only if owner provides proof of payment with front and back of cancelled check." Moved, Seconded, Carried 7-0

Board President moved to New Business

New Business

Appointment of Lawrie Cunningham

"Be it resolved: Due to the resignation of Leland Iverson, I move to appoint Lawrie Cunningham to serve out the term to April 2021." Moved, Seconded, Carried 7-0

Lawrie Cunningham joined the meeting

Nominating Committee

"Be it resolved: To accept the slate of committee members: Jim Aust, Joelle Hamontree, Dave Lamb, Lori O'Shea, Lisa Stanson and Warren Wimmer to serve as the nominating committee with Quentin Wall serving as chair." Moved, Seconded, Carried 8-0

Inspector of Elections Proposal

"Be it resolved: To approve the proposal from Accurate Voting to be the inspector of elections for the April 2020 Election Process for \$2,796.00 plus postage fees. Moved, Seconded, Carried 8-0

Jucar Tennis Court Camera

"Be it resolved: To deny the proposal from Stratex for \$4,640 to install 2 cameras, one on the basketball court and one at the entry by pickleball at this time." Moved, Seconded, Carried 8-0

Lenore Butcher – Tree installation at San Remo Park

"Be it resolved: To honor Russ Butchers request to pay to install a tree at the new San Remo Park nearest the tot lot in honor of his late wife Lenore with a plaque." Moved, Seconded, Carried 8-0

Old Business

Directive 5 – Tennis Court Rules and Regulations

"Be it resolved: To adopt the Tennis Court Rules and Regulations, Directive 5 as approved at the November 13, 2019 Board meeting." Moved, Seconded, Carried 8-0

Boat Launch Key System – Tabled

Park West Proposal to Dethatch the grass at 6 end parks

New Landscape Chair and Board Member Lawrie Cunningham will investigate the need for Dethatching grass at end parks and bring back to the Board at the January meeting.

Park West Proposal to skin palm trees at Genoa Boat garden

Management was requested to get a 2nd proposal from a tree trimming company for January meeting.

Park West Proposal to change backflow irrigation covers – Tabled

Park West 2020 Contract

"Be it resolved: To approve the 2020 Park West Landscape Maintenance contract at \$7,089.00 per month with adding annual 2x per year tree trimming and seasonal flower changes 4x per year to the contract." Moved, Seconded, Carried 8-0

Committee Reports

Directive 6 Architectural fees

"Be it resolved: To approve the new Architectural Schedule of fees and deposits." Moved, Seconded, Carried 8-0

Directive 25 – A Committee was selected to redraft Directive 25: Use of the San Remo Park, and to include the end parks and beach grass area.

Entry CNB/LICA – A committee is being formed to work in conjunction with the City of Newport Beach on design of entry.

Letter to City of Newport Beach- Entry to Island landscaping clean up

"Be it resolved: To send the letter as drafted by Board President, Eric Henn, to the City of Newport Beach, Public Works department outlining the landscaping clean up required at the entry to Lido Isle." Moved, Seconded, Carried 8-0

Newport Beach Dredging

"Be it resolved: To send a letter on behalf of the Board of Directors opposing the Dredging of the bay plans proposed." Moved, Seconded, Carried 8-0

Landscape Committee

"Be it resolved: To obtain a proposal from DMI to conduct a survey on the engineering of the 5 end parks requiring renovation." Moved, Seconded, Carried 8-0

Architectural – Minutes reviewed from 1.18.19 & 12.2.19 Architectural Meeting.

New Roofing Material

Owner is inquiring to obtain approval to use a man-made alternative roofing material, not approved by the architectural committee, Directive 6 and more important the CC&Rs.

"Be it resolved: To obtain an opinion letter from legal counsel, David Cane to address the applicability of the CC & Rs vs Directive 6, to assist Directive 6 in permitting alternative materials for roofing, when the CC & Rs clearly state what is permissible for roofing materials." Moved, Seconded, Carried 8-0

LITC – Closure of San Remo Tennis Court

"Be it resolved: During the remodel of San Remo park, the San Remo Tennis court fencing needs to be removed and repaired, therefore closure of the tennis court has occurred. During the closure the Barcelona court will be available for residents only and private instruction will only be permitted at the Jucar Tennis court. Tennis Court." Moved, Seconded, Carried 8-0

BBQ Countertop at San Remo Park

"Be it resolved: To approve #2 example tile, color 842 for the BBQ countertop at San Remo Park." Moved, Seconded, Carried 8-0

Adjourn The meeting was adjourned at 9:10 pm.

Next Board Meeting:

The next Board meeting will be held on 12/16/19 at 3:30 PM and 1/8/20 at 6:00 PM

Lido Isle Community Association Board of Directors Meeting - December 16, 2019

BOARD MEMBERS PRESENT:

Eric Henn, President
Shana Conzelman, Vice President
Marion Smith, Secretary
Marsha Ferrall, Director
Dave Rahn, Director
Lawrie Cunningham

GUESTS:

Shelly O'Sullivan, General Manager

NOT PRESENT:

Scott Obel, Treasurer
Mike O'Shea, Director
Leslie Thompson, Director

GRANDMANOR PERSONNEL PRESENT:
None

Call to Order: President, Eric Henn called the meeting to order at 3:30 pm.

Homeowners Forum

2 owners attended. One owner wants the communication to be more detailed with explanations on what will be discussed.

New Business

New Election Policy

"Be it resolved: To adopt the new election policy as approved at the November 13, 2019 Board Meeting per the recommendation of David Cane, legal counsel for the association. Moved, Seconded, Carried 6-0

Meeting Adjourned at 3:50 pm.
Next Board Meeting

The next Board meeting will be held on January 8, 2019 at 6:00 PM.

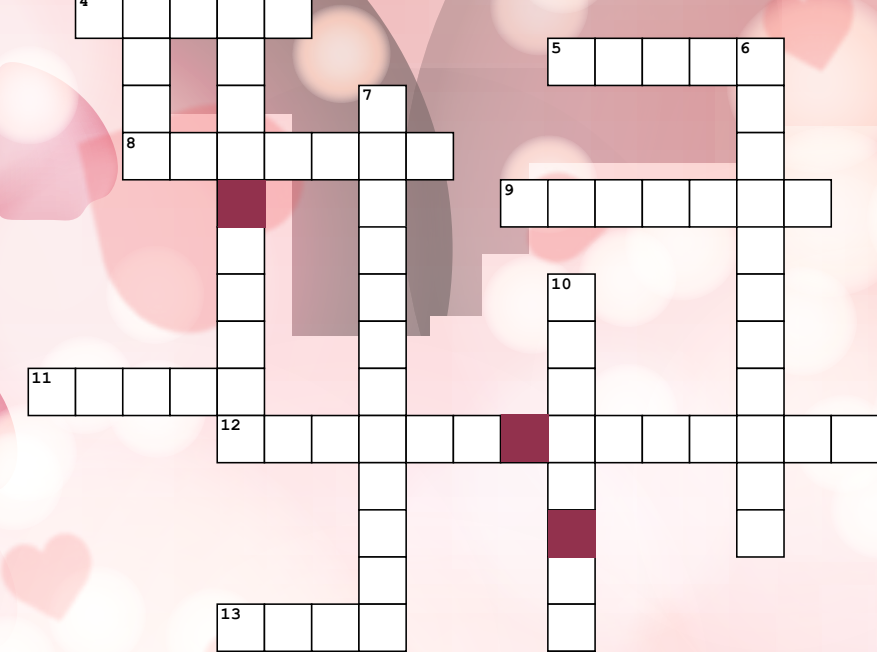
CROSS-ISLE PUZZLE

Created by Harbor 20 Sailor, Ellen Volk

Have an interesting fact about Lido?

Send to: Islander@lidoisle.org

Subject: Cross-Isle Puzzle



Across

- We _____ our Island and not just on February 14.
- Lido Pharmacy has these, with catchy phrases.
- Sweet treats in these particular Lido Isle palm trees.
- Competitive racing of sailboats in our bay
- It will take several flowers from your garden to make one of these.
- He will be flying around shooting arrows—no need to duck.
- If you have one you won't know it!
- Lido Residents live in District _____, represented by Diane Dixon

Down

- This is frequently spotted when two people are walking down the strada together.
- As of December 10, 2019 Will O'Neil is the new _____ of Newport Beach
- Two love birds but also a popular candy.
- A fruit, best dipped in chocolate.
- 2020 Commodore of LIYC

KILLELEA LANDSCAPE & MAINTENANCE (949) 645-4635

www.Killelealandscapeco.com

Brian Killelea Bklandscapeco@Roadrunner.Com

Jack Killelea J.Killelealandscape@Gmail.Com

DIRECTIVE UPDATES



Directive update postings will be available for 28 days on the LICA website and will be posted in the LICA office as well. The current update section will only apply when there is a pending directive update.

Go to: www.lidoisle.org ➤ Member Login ➤ LICA Forms ➤ Directive Updates

This information is also available at www.GrandManors.com

CURRENT UPDATE(S):

DIRECTIVE 19: PREPARATION OF MINUTES OF ALL BOARD OF DIRECTORS MEETINGS POLICY WAS APPROVED UNANIMOUSLY BY THE BOARD OF DIRECTORS AT THE JANUARY 8, 2020 BOARD OF DIRECTORS MEETING.

Comments or suggestions regarding Directives or Minutes should be sent to the Board Secretary—
Contact information is on page two of the Islander.

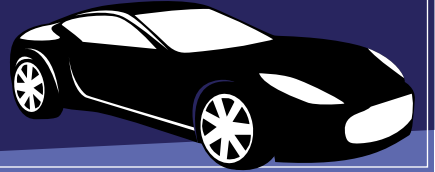
Boat Parade Party? Valet Parking?

Best Valet
PARKING CORPORATION

CALL (800) 708-2538

www.bestvalet.com
Email: mike@bestvalet.com

Since 1984, we have been providing valet parking at country clubs, restaurants and private parties throughout Orange County. You can count on us for your valet parking needs for boat parade parties, weddings, corporate events and all the important occasions in your life!



GENOA WEST DOCK

is now open for a trial period to provide for cleaning and minor-repairs of LICA member vessels. The terms below must be adhered to with the aspiration to make this policy permanent.

Exclusively for
Lido Isle Community Association Members

CLEANING AND MINOR REPAIRS OF VESSELS

Residents have requested use of space at LICA for washing of boats, especially those that are on moorings in the bay. To that end, the LICA board has approved the following **immediately for a 6-month trial period**. Yachtsman should review Policy/Procedure Directive 9: Rules for the use of Clubhouse and all other LICA Docking Facilities on the LICA website or request a copy from LICA so they are familiar with the directive.

During this time Directive 9 (is followed as it stands now) and at the end of 6 months, it will be evaluated for an update with these changes herein.

Guidelines for Trial:

- The use of Genoa West is for LICA members "in good standing" only. No guests/reciprocal privileges may use Genoa West under any circumstances of this trial.
 - Permitted services can only be undertaken at Genoa West and the Yachtsman must make an appointment with LICA and submit a completed *Docking Facility Policy and Agreement Form that is kept on file. The office will schedule your requested time.
 - The Yachtsman is responsible for their third-party vendors whom they allow to have access to the dock for work purposes. In addition, vendors must complete the Docking Facility Policy and Agreement Form and make sure they are familiar with the Directive 9 rules that pertain to "cleaning and minor repairs". The LICA office shall have the authority to prohibit any service vendor from providing further services after one or more warnings for failure to comply with any of the guidelines.
 - Permitted services include vessel cleaning, power washes, complete detailing/waxing and minor repairs. No major repairs shall be conducted on any Lido docking facility that violates LICA/LIYC rules or directives or services, that violate federal, state or local law. No service is allowed that creates unnecessary noise, dust or runoff per discretion of the LICA office.
 - The Yachtsman will make his request for docking time with LICA.
 - Facilities may be used in two (2) hour increments, not to exceed a twenty-four hour total. Regardless of advance registration no docking may occur in inclement weather or in wind conditions above 15 knots. Due to Genoa West Dock capacity maximum yacht size may not exceed fifty-five feet in total length. In rare circumstances or in lieu of major detail of large vessels LICA may allow one overnight stay to allow completion of work which will be counted against the total number of permitted overnight stays on the LICA clubhouse dock (currently 7 per month). At no time may the Yachtsman or guests sleep overnight at the Genoa dock.
 - Should your service complete sooner than expected or need to be rescheduled a courtesy call to the LICA main office is appreciated so other members may enjoy this privilege.
 - Service hours are Monday-Friday 7AM to 6:00 PM. No reservations/services will be permitted on a weekend or major holiday which are: Memorial Day Weekend (Friday through Monday), July 3rd and July 4th, Labor Day, Thanksgiving and the day after, Christmas Eve and Christmas Day, no overnights during Newport Beach Boat Parade week.
 - Authorized users of Genoa West Dock must haul away their own trash and/or drive down and dispose of trash in the large dumpster at east end of the Clubhouse
- *A copy of your valid Marine Certificate or DMV registration and proof of adequate insurance naming LICA additional insured is required for the agreement forms and may be reviewed at any time.
- *All service providers must provide proof of adequate insurance naming LICA additional insured.

FEBRUARY 2020 CALENDAR OF EVENTS



2	Sunday	LIMC Super Bowl Party	12pm-6pm
3	Monday	LICA Architectural Meeting	4pm-6pm
6	Thursday	LITC Board Meeting	7:30am-8:45am
6	Thursday	LIYC Sailing Committee Meeting	10am-12pm
7	Friday	LIWC Wine & Chocolate Around the World (couples)	5:30pm-10pm
8	Saturday	LIYC Harbor 20 Adult Sailing Clinic #1 of 4	9am-6pm
9	Sunday	LIYC All Member Welcome Back Social	6pm-8pm
10	Monday	LICA Architectural Meeting	4pm-6pm
12	Wednesday	Meet the Candidates	5:30pm-6:30pm
12	Wednesday	LICA Board Meeting	6pm-9pm
16	Sunday	LITC SOS	12pm-4pm
17	Monday	LICA Architectural Meeting	4pm-6pm
24	Monday	LICA MCIC Meeting	4pm-5pm

*San Remo Park closed for renovations estimated through April 2020.

Note: Dates and times are subject to change.

All recurring events are posted on specific club pages

February

S	M	T	W	T	F	S
						1
2	3	4	5	6	7	8
9	10	11	12	13	14	15
16	17	18	19	20	21	22
23	24	25	26	27	28	29

IN ESCROW!



84 Turnstone | 4 Bed, 4.5 Baths



122 Via Ithaca, Newport Beach | 3 Bed, 2 Bath | Offered at \$8,200/mo



BERKSHIRE HATHAWAY
HomeServices
California Properties

SHARON GRIMES Realtor®
Call Your Trusted Real Estate Partner
949.466.5756
Sharon@SharonGrimes.com
SharonGrimes.com
DRE 01149249



©2019 Berkshire Hathaway HomeServices California Properties (BHHSCP) is a member of the franchise system of BHH Affiliates LLC.

VILLA

JON FLAGG



408 VIA LIDO NORD

Lido Isle | Offered at \$4,695,000
4 Bed | 4.5 Bath | 2,800 Approx. Sq. Ft.



225 VIA ORVIETO

Lido Isle | Offered at \$3,099,000
3 Bed | 3.5 Bath | 2,671 Approx. Sq. Ft.



116 VIA ITHACA

Lido Isle | Offered at \$2,549,000
2 Bed | 3 Bath | 1,822 Approx. Sq. Ft. | 45' lot



126 VIA KORON | IN ESCROW

Lido Isle | Offered at \$3,495,000
3 Bed | 5 Bath | 3,400 Approx. Sq. Ft.



121 VIA KORON | IN ESCROW

Lido Isle | Offered at \$2,570,000
3 Bed | 3 Bath | 2,322 Approx. Sq. Ft.



219 VIA KORON | IN ESCROW

Lido Isle | Offered at \$2,495,000
3 Bed | 3 Bath | 2,453 Approx. Sq. Ft.



447 VIA LIDO SOUD | JUST SOLD

Lido Isle | Sold for \$4,430,000
4 Bed | 4 Bath | 3,100 Approx. Sq. Ft.



JON FLAGG
949 698 1910
JFLAGG@VILLAREALESTATE.COM
JONFLAGG.COM
DRE No. 01316048

jonflagg.com