

PUBLISHED BY THE LIDO ISLE COMMUNITY ASSOCIATION

OCTOBER 2019

# BEAUTIFUL Southern California

LICA welcomes new Association  
General Manager, Shelly O'Sullivan



*"I enjoy people, the beach and sunshine—  
I always wanted to come back to beautiful Southern  
California and I am thrilled to be back at such an  
amazing place, I pinch myself daily."*

— Shelly O'Sullivan

Please join the Board of Directors in welcoming **Shelly O'Sullivan** to Lido Isle Community Association. Shelly has been at the helm since August 15th, she comes to us with over 12 years of experience in association management. For the past 35 years Shelly has lived in San Rafael, California in Marin County where she and her husband Martin, a General Contractor for the past 30 years raised 2 boys, Connor 26 who lives in Denver, Colorado and Patrick "Patch" 21 who started his Junior year at Chico State in August. As empty nesters, Shelly found this a great opportunity to return to where she was born and raised, Hoag Hospital. She attended Mater Dei High School and then traveled up North to Saint Marys' College. After she graduated college she returned to Southern California and was a part of the endowment firm that built the Orange County Performing Arts Center in 1985. Upon the completion of the Center Shelly obtained a great opportunity to go back up to San Francisco. Up North, Shelly began her career as a leasing agent and moved into the role of management for a high-rise apartment community. Apartment management led her to Association Management where she was a portfolio manager for over eight years. She

left the Association management business to the real estate industry and pursued a career in Sales for American Home Shield, home warranty and Title. Three years ago, Shelly returned back to Association Management with RealManage, an affiliate of GrandManors and managed seven associations from single family homes to Condos and Commercial Properties.

As Vice President of the Lido Isle Community Association I have already experienced Shelly's keen sense of judgement and vast knowledge of the property management business. Her intuitive skills will serve our community well. There is no doubt that Shelly is determined to make us all proud. While transition and change are never easy the board of directors and GrandManors is working hard to provide what this beautiful place we are blessed to call home deserves.

Let's show Shelly how much we appreciate her by giving her our support as we transition into fulfillment.

Shana Conzelman  
Vice President  
Lido Isle Community Association



**GrandManors Resident Portal**  
is now usable.

- ▶ Go to WWW.GRANDMANORS.COM.
- ▶ Go to resident portal for Lido Isle.
- ▶ You will be requested to "create user". You will need your account #. This account # is on the letter sent to you back in July. This account # is specific to your property.

If you need assistance, please do not hesitate to call our Resident Services Group at 855-947-2636.

We apologize for the delay, however, management was waiting for further documents from the previous management company thus causing the delay.

## LICA UPDATES:

**Directive 5** and **Directive 22** have been approved by the Board of Directors.

Membership may view all Directive Information at [www.grandmanors.com](http://www.grandmanors.com) or [www.lidoisle.org](http://www.lidoisle.org) located in the Members Only Tab.



## INSIDE THIS ISSUE:

Town Hall with Mayor Diane Dixon .....	3
Old Isle: All Along the Watchtower .....	5
San Remo Park Beautification Project .....	6
SC Bob Yates Recognized .....	9

PRESORTED STANDARD  
U.S. POSTAGE  
**PAID**  
Permit No. 60  
Newport Beach, CA 92660

**LIDO ISLE COMMUNITY ASSOCIATION**  
701 VIA LIDO SOUND  
NEWPORT BEACH, CA 92663  
**CHANGE SERVICE REQUESTED**

**2019-2020 BOARD OF DIRECTORS:**

**Eric Henn - President**  
erichenn@icloud.com  
Administrative Committee,  
Finance Committee

**Shana Conzelman - Vice President**  
sconzelman@gmail.com  
Administrative Committee, Financial  
Committee, Aviation Committee,  
Communications/Website, Islander Liaison

**Scott Obel - Treasurer**  
srobel@gmail.com  
Finance Committee, Administrative  
Committee, Insurance, Security,  
Traffic Safety

**Marion Smith - Secretary**  
newportmarion@hotmail.com  
CC&R's & By-Laws, City Relations,  
Landscape, LIWC

**Leslie Thompson - Director**  
lmthomp2010@gmail.com  
LITC, Clubhouse/snack bar,  
Architectural Liaison

**Dave Rahn - Director**  
drahn@att.net  
MCIC

**Mike O'Shea - Director**  
oshea17@gmail.com  
Disaster Preparedness, Environmental,  
Erosion (Beaches), LIMC, LIYC

**Marsha Ferrall - Director**  
marshaferrall@gmail.com  
City Relations, Landscape, Special Events

**Leland Iverson - Director**  
lee@ldiarc.com  
LIYC, Marine Facilities, Erosion (Beaches)

Officers and Directors may be reached through the Clubhouse office at 949.673.6170.

**GRANDMANORS:**

Shelly O'Sullivan, *General Manager*  
Matt Bosma, *Assistant Manager*  
Alanna Anderson, *Administrative Assistant*  
Toni Vega, *Weekend Administrative Assistant*  
Ron Westmark, *Maintenance Technician*

**SECURITY BY PATROL ONE**

**LIDO ISLANDER® STAFF:**

Shana Conzelman, *Editor*  
Allison Witton, *LIYC*  
Taylor Good, *LIMC*  
Jon Flagg, *LITC*  
Margo Iverson, *LIWC*  
Tiffany Hicks, *Cornerstone Graphic Design*  
Western Lithographics Printing

**OFFICERS - LIDO ISLE CLUBS:**

Taylor Good, *LIMC President*  
Sid Crossley & Janice Walker, *LITC Co-Presidents*  
Margo Iverson, *LIWC President*  
Betsy Decker, *LIYC Commodore*

Rate sheets for advertising by local businesses and services of interest to Lido Isle residents are available at the Clubhouse 949.673.6170. Deadline for materials is the 12th of the month prior to publication on a space available basis.

As an island paper for island residents, the Lido Islander is always open for new features of special interest to Lido Isle residents. Articles, photos and artwork concerning island community activities and events, island personalities, history and nostalgia are welcome. Material submitted for publication should be in by the 12th of the month preceding publication. Letters for the Lido Islander on issues of interest to island residents may be submitted to the LICA office for publication. Brevity, clarity and propriety of subject matter will be appreciated. Anonymous letters will not be published.

Lido Islander® is a registered trademark of the Lido Isle Community Association  
© 2017 Lido Isle Community Association

**LICA OFFICE HOURS:**

Monday - Thursday 8:00am - 5:00pm  
Friday 8:00am - 8:00pm  
Saturday & Sunday 10:00am - 4:00pm

For non-emergencies on LICA property, call Patrol One at 949.367.8055 (press 6). For a Critical Emergency at any hour, requiring police, fire or paramedic response, CALL 911.

# LIDO ISLE SECURITY NEWS

BY MIKE POSTIL



## Never Let Your Guard Down

### Secure your homes and Trick-or-Treat Tips

Fall is in the air, summer is history and the month ends with a festive night of trick or treat. Yes, October is here and things have settled down from June through September. As I have always stated though, never let your guard down and always be aware of your surroundings.

Even though the crowds and activity around our community have diminished, there is still plenty of things to pay attention to. The constant construction on the Isle brings many people here for work. Most of the construction crews are people working hard and just trying to make a living. Unfortunately, some come on to Lido posing as construction people, trying to blend in, and look for opportunities. So, as a reminder, please close your garage door if you are not present. If the weather is warm and you are airing out your garage area, close your door and only leave a small gap open. Remember to completely close your garage door at a later time. Do not invite unwanted eyes to be aware of your personal belongings. Also, lock your vehicles at all times and remove your items or hide them. Again, do not entice someone to target your vehicle.

Regarding Halloween... Please pay attention to all the kids on the streets and sidewalks. If you are driving during the trick or treat hours, please exercise a large amount of caution. Watch your speed and be prepared for kids to be crossing the streets. Conversely, parents please advise your kids about safety protocols whether you are with them or not. It would be a good idea if you and or your kids have a flashlight as well. That can be used for alerting oncoming vehicles, navigating crowds and watching for potential hazards while walking.

Have a great October, be safe and Happy Halloween!

### Helpful Tips for Taking and Sending PHOTOS & IMAGES



#### SHOOT HIGH QUALITY PHOTOS

If you're using a cell phone to take photos, go into your camera settings and check to make sure you are shooting at maximum resolution and that picture quality is set at the highest setting. This will likely be 8mp-12mp or a resolution of about 3264 x 2448 pixels. Take photos in landscape mode and crop later if needed.

#### CHECKLIST:

- Set Resolution
  - ✓ 8 megapixel +
  - ✓ About 3264 x 2448
  - ✓ 300 dpi
- Shoot in Landscape
  - ✓ Turn Camera Horizontal
- Avoid Blur
  - ✓ Turn off Optical Zoom
  - ✓ Turn ON Image Stabilization
- Lighting
  - ✓ Natural Light
  - ✓ No Flash



## BOY SCOUT TROOP 37

Hello Lido! This is your Troop 37 columnist, Mason Richley Alexis. This month, we are looking forward and back into our rewarding time as scouts. Over this past year, we've matured, thanks to the many trials, tests, and projects we've encountered. We fondly recall our many service projects, including one at St Andrews where we met a World War 2 veteran who had once been a Boy scout (see photo). Looking forward, we anticipate many exciting campouts and backpacking trips, including a night hike without flashlights. Overall, with all these activities ahead of us, we can't wait to explore and grow through upcoming challenges and adventures. Thank you for reading, and we hope you tune in for next month's article!



Welcome Lido Parents, Grandparents, and Caregivers of babies, toddlers, preschoolers and primary graders.

– 7th Annual –

## "Not-So-Scary" Halloween Trick or Treat

THURSDAY, OCTOBER 31st

Meet up @ the Clubhouse flagpole grass area by 5:30pm for a group photo before we all go trick or treating together along nearby stradas.

Lido Littles functions under the auspices of the Lido Isle Community Association (LICA). All Lido Littles events are no charge. For more information please contact: Ann Marie Williams annwilliams24@sbcglobal.net



# TOWN HALL

with

## Mayor Diane Dixon

October 29

5:30pm-7:30pm

Wine & Cheese

Mayor Dixon will be holding a special, Lido Residents Townhall in the LICA clubhouse. This will include:

- ➔ City of Newport Beach Homeless Shelter
- ➔ General Aviation Improvement Plan Update
- ➔ Lido Marina Village
- ➔ General Plan Update

*There will be an Open Microphone question and answer session following her presentation.*



You can hear Diane's five guiding principles as a council member, and how she has put them into action:

- Fiscal discipline and accountability
- Public safety
- Government transparency
- Honoring our residents
- Maintaining and enhancing quality of life



Most importantly, you can communicate your comments, suggestions and concerns to her in person at the Lido Townhall.



September 12, 2019

## September 10 Board of Supervisors Meeting Recap



## Request for Proposals (RFP) for Full and Limited Service Fixed Base Operators

On September 10, the Orange County Board of Supervisors (Board) advanced the John Wayne Airport General Aviation Improvement Program (GAIP) a step further by approving the Request for Proposals (RFP) for Full and Limited Service Fixed Base Operators. The RFP includes the land use restrictions the Board adopted on June 25 to ensure a significant portion of the airport remains for use by light general aviation.

A key part of the Board's decision involved whether to include additional specificity in the RFP regarding what structures will ultimately be built at the airport. The City of Newport Beach (City), the City of Costa Mesa, aviation-focused community groups and the So Cal Pilots asked for the inclusion of more details into the RFP to provide clear direction to potential proposers. The City also examined the legal issues and we believe our request for more detail in the RFP was well within the law. The County, however, holds a different legal opinion, and the Board felt constrained by the law from including the precise facilities and mix of structures that will be built under the GAIP.

We're disappointed that our requested details didn't get included in the RFP, but based upon the Board's discussion, we believe the Supervisors understand the needs and desires of the communities surrounding the airport and the So Cal Pilots. Many of their comments and questions centered on issues Newport Beach raised and also involved maintaining the current mix of general aviation at the airport.

Now that the RFP is finalized, we intend to work directly with the fixed base operators as they develop their proposals and we will continue to communicate with the County. The City of Newport Beach will oppose any proposal that does not support our community's best interests.

### 2020 Plan Year – Airport Capacity Allocations

The Board approved the staff recommendation for the John Wayne Airport Capacity Allocations for the 2020 Plan Year. Under the new plan, JetSuiteX/Delux will only be allowed to continue to operate at ACI Jet if its operations fall within the 2019 Plan Year operations levels, which total about 95,000 passengers. If JetSuiteX/Delux wants to increase its passenger allocation, it must move its entire operation to the Thomas F. Riley Main Terminal. If this occurs, JWA would allow JetSuiteX to provide operations for up to 200,000 passengers in the 2020 Plan Year.

The City was encouraged by the Board's decision and sees this as first step toward moving this commercial operation back to the main terminal, where all other commercial operations are based. We have repeatedly expressed safety, security and accountability concerns over JetSuiteX operating at an FBO, in the general aviation area of the airport.

**LIWC Annual Pumpkin Carving Party**

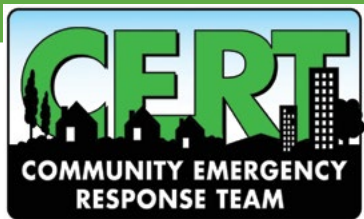
Bring your kids, pumpkins & carving tools for some pre-Halloween fun!

**Sunday, October 27 from 4-6pm**  
Location TBD

LIWC Members: \$10/child  
Non-LIWC Members: \$12/child

**Pizza, drinks & bounce house will be available!**

Questions? Angie Barrie  
949-529-8907 | [angiebarrie4@gmail.com](mailto:angiebarrie4@gmail.com)  
Drop off check (payable to LIWC) or cash to 214 Via San Remo by 10/24



by Bill Kroener

# A Neighbor's Thoughts on DISASTER PREPAREDNESS



*"-there is material risk that there may be a major earthquake, tidal wave or flood that could significantly affect or cut off Lido Isle..."*

Your regular CERT columnist, Gail Reisman, asked me for a contribution for this issue. After some careful thought here is my take. I (together with the rest of us) should pay close (in my case, closer) attention to CERT. Here is why...

Extensive academic literature is devoted to the fact that most folks underestimate the need to prepare for low probability/high impact events. Then they overcompensate if the event actually happens. I think of my many friends in lower Manhattan; none had emergency kits or contingent plans for communications outages before 9/11 but now all do.

Of more direct relevance, California casualty insurers are required to offer assigned risk earthquake insurance, not covered in the standard homeowners policy, in order to do other casualty business lines. Yet that optional coverage--among the largest uninsured risks many of us face--it is purchased by only around 13% of homeowners because it is considered expensive and has a high deductible.

Classic cases of low probability/high impact events of particular relevance to readers of the Islander are earthquakes, tidal waves and floods.

One of the largest and most damaging earthquakes in Southern California history occurred on what seismologists have long identified as the "Inglewood-Newport Beach" fault. The epicenter was underground approximately three miles offshore from the southern end of Huntington Beach. It happened in 1933 and is generally known as the "Long Beach Earthquake" because some 200 people were killed in and around Long Beach, the only nearby developed area at the time. The California legislature promptly (in some 30 days) revised the building code and thereafter schoolchildren, my father among them, were taught to duck under desks rather than run outside and possibly be hit by falling masonry. (The same procedure was multi-purposed

in my own youth to "duck and cover" in case of a nuclear event.)

According to at least one source, the 1933 earthquake caused the collapse of a highway tunnel under construction but never revived from the Newport Peninsula to Corona Del Mar. Who knew?! (I did not though my godfather's dad, Joe Beek, started the ferry years before then).

The development of plate tectonics in my lifetime shows that earthquakes and tidal waves are not randomly distributed. In fact, in recent years, seismologists have extended the Inglewood-Newport Beach fault to San Diego as the Inglewood-Newport Beach Rose Canyon fault.

In short, there is material risk that there may be a major earthquake, tidal wave or flood that could significantly affect or cut off Lido Isle and low lying areas of coastal Newport Beach. We cannot be sure where we might be or our ability to communicate with the family should that happen. So it makes sense to plan ahead even though there is low probability. My grandkids' plan of leaving their backpacks at Newport El and swimming home to Lido (then sailing sabots over to pick up groceries at the market) may need to be supplemented.

CERT (Community Emergency Response Team) developed following the Whittier Narrows earthquake of 1987 as an approach to preparing for future low probability/high impact events like those that may affect Lido Isle and Newport Beach. CERT educates community residents and prepares volunteers to respond to disasters that may impact us.

So thanks to Gail and others that are part of the Lido CERT team. Pay attention and do some advance planning with family and friends. Hopefully it is all unnecessary but you might be happy you did.

NEW LISTING



212 Via Quito  
3 Bed | 3 Bath | 2,556 Sq Ft | 40' Lot

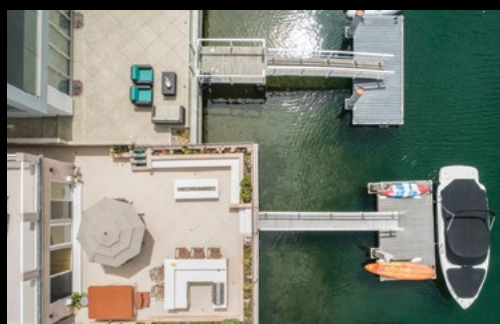
\$2,575,000 | 212ViaQuito.com

REDUCED



53 Cape Andover  
4 Bed | 5 Bath | Elevator | Panorama views  
\$3,825,000 | 53CapeAndover.com

IN ESCROW



506 37th Street  
3 Bed | 3 Bath | Additional Rental Unit & Dock  
\$3,195,000 | 50637th.com

COMPASS



Commitment  
Integrity  
Service

Leslie Thompson  
Realtor  
949.945.8176  
leslie.thompson@compass.com  
lesliethompsonhomes.com  
DRE 01836958

# Old Isle

By Carol Mason



Lido's Clubhouse tower played its part in the war effort.

## All Along the WATCHTOWER

Having spent some time recently in Singapore, delving into the World War II history of that island, Old Isle was intrigued to read a snippet or two about World War II's impact on our own island. A kind Lido neighbor (Thanks, Nancy Arnold!!) dropped off a booklet of old (1980s-vintage) Islander columns written by real estate agent and former Lido resident, Howard Lawson. A historian after Old Isle's own heart, Lawson gave the rundown on what transpired on Lido and in Newport Harbor in response to the Japanese attack on Pearl Harbor on December 7, 1941. Within an hour of the Japanese attack, Newport Harbor was closed to private yachts for the duration of the war (fishing boats were allowed access with ID which was checked by the Coast Guard at the harbor entrance).

Shortly thereafter, Lido residents were given instructions on where to take shelter in case of a local Japanese air attack...under the street! That's right, Lido residents were instructed to lift up the manhole covers in the street and join the cockroaches who so often seem to be resident down there. I expect residents of the time were very glad there were no air raids on Lido!

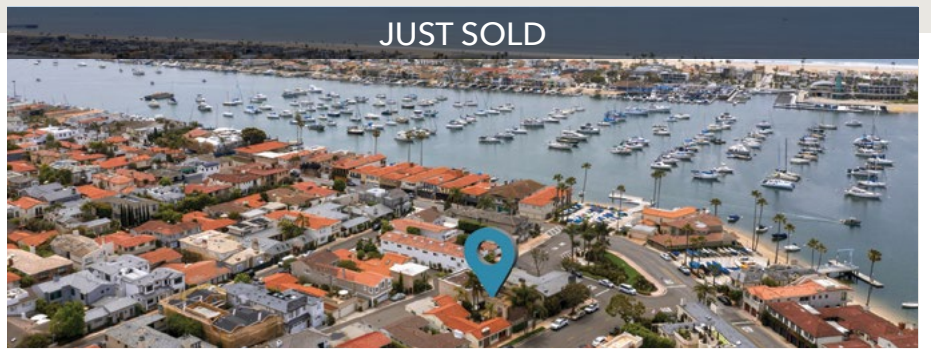
However, there was a report of a two-person Japanese submarine being beached in front of Newport Elementary School. Whether this was true or not remains open to question, but apparently there were locals who swore that they saw this, according to Lawson. The Japanese crew was reportedly dead.

One of Lido Isle's contributions to the war effort was the magnificent tower at the Lido Clubhouse, which became a station for a Ground Observer Corps who scanned the skies for Japanese bombers. In addition, an Army canine patrol scanned the beaches from Huntington to Newport nightly for any ground incursions.

Life in Newport Beach during World War II was not the carefree life that we are fortunate to enjoy. Thank you to Howard Lawson for helping us all to remember this historic time on Lido.

## The McCormick Group

### LIDO ISLE CURRENT ACTIVITY



**106 VIA GENOA | \*\$2,995,000**  
4-BR, 3.5-BA | APPROX. 3,012 SF



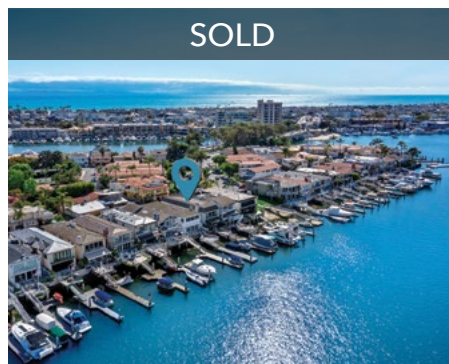
**545 VIA LIDO NORD | \$3,995,000**  
4-BR, 4.5-BA | APPROX. 4,069 SF



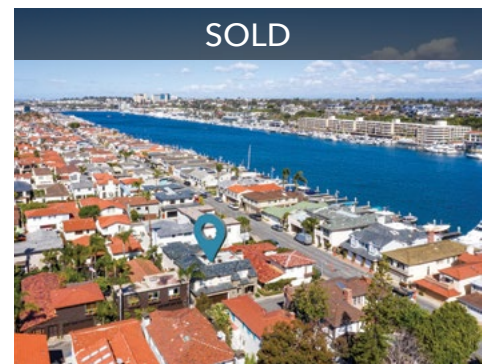
**119 VIA KORON | \$4,200,000**  
5-BR, 4.5-BA | APPROX. 4,634 SF



**208 VIA ORVIETO | \$3,695,000**  
4-BR, 4.5-BA | APPROX. 3,000 SF



**206 VIA LIDO NORD | \*\$4,895,000**  
5-BR, 5-BA | APPROX. 3,119 SF



**225 VIA QUITO | \*\$4,195,000**  
4-BR, 5-BA | APPROX. 3,963 SF

### Boat Parade Party? Valet Parking?

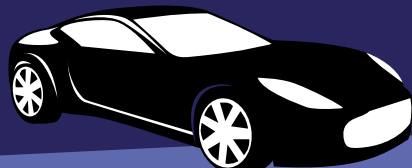
Since 1984, we have been providing valet parking at country clubs, restaurants and private parties throughout Orange County. You can count on us for your valet parking needs for boat parade parties, weddings, corporate events and all the important occasions in your life!

**Best Valet**  
PARKING CORPORATION

CALL (800) 708-2538

www.bestvalet.com

Email: mike@bestvalet.com



**ALISON MCCORMICK**  
THE MCCORMICK GROUP  
Licensed Associate Real Estate Broker

M: 949.355.4104  
Alison.McCormick@elliman.com  
DRE# 00607959

**Douglas Elliman**  
REAL ESTATE  
elliman.com/california

150 EL CAMINO DRIVE, BEVERLY HILLS, CA 90212. 310.595.3888 © 2019 DOUGLAS ELLIMAN REAL ESTATE. ALL MATERIAL PRESENTED HEREIN IS INTENDED FOR INFORMATION PURPOSES ONLY. WHILE THIS INFORMATION IS BELIEVED TO BE CORRECT, IT IS REPRESENTED SUBJECT TO ERRORS, OMISSIONS, CHANGES OR WITHDRAWAL WITHOUT NOTICE. ALL PROPERTY INFORMATION, INCLUDING, BUT NOT LIMITED TO SQUARE FOOTAGE, ROOM COUNT, NUMBER OF BEDROOMS AND THE SCHOOL DISTRICT IN PROPERTY LISTINGS SHOULD BE VERIFIED BY YOUR OWN ATTORNEY, ARCHITECT OR ZONING EXPERT. IF YOUR PROPERTY IS CURRENTLY LISTED WITH ANOTHER REAL ESTATE BROKER, PLEASE DISREGARD THIS OFFER. IT IS NOT OUR INTENTION TO SOLICIT THE OFFERINGS OF OTHER REAL ESTATE BROKERS. WE COOPERATE WITH THEM FULLY. EQUAL HOUSING OPPORTUNITY. \*LIST PRICE



# I Can Hear the Sound of Laughter & Good Times...

*San Remo Park Beautification is just around the corner and the anticipation is in the air!*

After over six years of planning... the Major Capital Improvements Committee (MCIC) received a unanimous vote from the Board of Directors to begin construction on San Remo Park mid-October 2019. Meticulous thought, research and countless hours were spent to provide this plan for a beautiful, safe and functional space for all residents to enjoy.

Under the guidance of Board Director, Dave Rahn and his amazing team this project has entered the 'I can't wait zone'. During the next few months let's all pull together and support the efforts of creating a park we can all be proud of. As always construction will cause some understanding from all and especially on the surrounding neighbors. However, something tells me this is going to be the go-to street to live on upon completion.

Please if you see Dave Rahn, Vicki Barnes, DeeDee McCutchan, Ann Marie Williams, Ken Wirgler, Dennis O'Hearn, Devon Kelly, Marilyn Read, Peter Rabbit or Diane Schmieder let them know how excited we are and appreciative that come late Spring 2019 we will be celebrating yet again another proud moment on this beautiful island!

CERT is our Community Emergency Response Team and along with their expertise and the City of Newport Beach training the expanded emergency equipment and response location will provide a meeting location should there be a major disaster.



Enjoy the open BBQ with family style picnic tables nestled under a state of the art shade coefficient. The fenced playground to the right keeps our Lido children safe, shaded and ready for those hot dogs coming fresh off the barbeque!



This efficient garage will be home for the LICA golf cart. Having this vehicle available during an emergency will serve as transport for the injured and convenience during the work week.

RECENT ACTIVITY ON LIDO



**417 VIA LIDO NORD | SOLD**  
Sold for \$3,120,000 | Represented Seller



**110 VIA TRIESTE | FOR LEASE**  
Offered at \$15,950/month



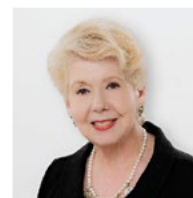
**217 VIA GENOA | FOR LEASE**  
Offered at \$13,550/month



**250 VIA LIDO SUD | FOR LEASE**  
Offered at \$11,550/month

**LIVE THE LIDO LIFESTYLE**

*Serving the coastal communities  
for the past 30 years.*



**OLGA MATTHEWS**  
949 922 5577  
OMATTHEWS@VILLAREALESTATE.COM  
DRE No. 00483564

# CROSS-ISLE Puzzle

**Have an interesting fact about Lido?**  
Send to: [Islander@lidoisle.org](mailto:Islander@lidoisle.org)  
Subject: Cross-Isle Puzzle

**ACROSS**

- Many boaters live on Lido so they can do this, and some live in this type of house
- This historical and interesting article is submitted each month by Carol Mason
- December 4th event with boutique shopping to benefit Hoag Hospital
- There will be a new building built with a golf cart garage for this emergency group
- Parties may hire this to park their cars
- A bright event that reflects on water and dazzles our bay every December
- The LIWC September social sips on \_\_\_\_\_
- Lido's new and extremely gifted new General Manager
- The wine that is gifted to best 'Islander on the Move' submission at the annual LICA all island meeting

**DOWN**

- When you run after someone you do this, but when you are the September Jr. LITC of the month it's your first name
- Updates on these policies can be found on [www.lidoisle.org](http://www.lidoisle.org)
- Editors favorite month of the year on Lido
- From mid October until April 2020 this area will be closed for beautification
- Directional instrument and Leslie Thompsons favorite property specialist

# SAVE THE DATE

## Shopping Wonderland

THE GIFT OF GIVING

15TH ANNUAL

# Lido Isle Home Tour

**Wednesday, December 4<sup>th</sup>**

*Tour exquisite Lido Isle residences  
& enjoy local eclectic shopping, unique and beautiful jewelry, clothing, art and more!*

Watch for more details!

Proceeds will benefit  
Hoag Hospital Cancer Care  
in memory of Leonore Butcher



Brooke Sharp  
Sailing Director, LIYC 2019

## Fall Programming Begins JR. SAILING PROGRAM RETURNS



Penelope Barto (L) & Trevor Johnson (R) warm up for the Fall Gold Cup on their way over to NHYC.

Our Junior Program is back at it after a short break and our fall programming is now under way! The season has had a strong start with our sailors showing promise of great things to come. We have many sailors continuing on from our summer program and so far I am very impressed with our Novices who have made their way up to Pre-C3s. The first day of fall sailing was windier than expected and they hopped in their boats without complaint and made the most of the difficult conditions. The fall and spring sailing programs are a great way to get more out of your sailor's time at LIYC with smaller numbers and more individualized attention.

The Fall Gold Cup hosted by NHYC kicked off the first regatta of the fall season and though the Lido participation was light post-summer, it was nice to see our most eager sailors back out on the water. The first day of sailing was light air with the breeze picking up a bit for the second day of racing. Overall, it was a fun weekend of racing in the bay. I'd like to recognize our sailors that came out and represented LIYC:

### Fall Gold Cup

- Reade Decker – FJ 2nd Place
- Maxwell Kleha – FJ 19th Place (Raced 1 Day Only)
- Ethan Simpson – FJ 7th Place
- Chase Decker – A 3rd Place
- Will Ingham – C1 11th Place
- Trevor Johnson – C2 20th Place
- Vance Khamsi – C2 9th Place
- Penelope Barto – C3 9th Place
- Preston Decker – C3 25th Place (Raced 1 Day Only)



Don't forget to sign your sailor up for the Halloween Regatta

Registration is online at [www.liyc.net](http://www.liyc.net).

Costumes are strongly encouraged for parents, coaches and sailors!

Vice Commodore Brian Benson invites you to join the

# LIYC 2020 CRUISE



**VIKING**  
Exploring the World in Comfort®

**OCTOBER 3-10, 2020**  
**8 DAY: CHATEAUX, RIVERS & WINE CRUISE WITH VIKING RIVER CRUISES**

**ALL-INCLUSIVE LUXURY:** 190 passengers

- ◆ Fares include river-view staterooms, all port taxes & fees
- ◆ All onboard meals including regional specialties, wine, beer, soft drink, specialty coffees, teas & bottled water
- ◆ Unlimited free Wi-Fi
- ◆ **Onboard Enrichment:** wine tasting, lectures, musical performances, craft & cooking demonstrations
- ◆ 7 guided tours with audio headset  
- Visit 3 UNESCO World Heritage Sites
- ◆ Scenic cruising along the rivers of Aquitaine
- ◆ **Culture Curriculum:** Sample Bordeaux wines, Participate in classes from a master sommelier.





CONTACT ME TO BOOK IN OUR GROUP WITH EXCLUSIVE LIYC FARES:  
**Starting at \$2674 per person**  
MARION SMITH    949.701.8286    NewportMarion@GMAIL.com



Fares are cruise only, per guest, based on double occupancy & availability. Prices and itineraries are based on availability and subject to change until deposit is made. Airfare can be arranged. Travel insurance recommended. We welcome all past Viking Cruiser too! CST#2053942-40





## SC BOB YATES RECOGNIZED *for service to the Sabot Fleet*

On Sunday, September 8, SC Bob Yates was given the *Jeanne Lynch Appreciation Award* by *International Naples Sabot Association* for all his support and contribution to Junior Sabot sailors over decades. Bob has been a constant for Junior Sailors and their families at Lido and beyond making sure that Sabots are ready to go and in good repair. As Bob says, "First, it was 25 years of fixing sabots so every kid could sail every day, no excuses. During the summer sailing at Lido, I was on station... During Regattas, I found myself helping every kid from every club... There was never a shortage of repairs to be done. Usually they were minor but necessary repairs. Fortunately, I had every part in the back of my SUV. Occasionally, we had to completely rebuild a boat to make it seaworthy. The boats were almost always ready to go by the next morning. This work was very satisfying to me. The kids and the parents really appreciated the results."

Congratulations to SC Bob Yates. We gratefully appreciate your dedication to our sailing community.

## Pies for Preschool



Once the Holidays come along, you are going to want Dutch Apple Crumb Pie, right? So, you might as well order yourself one or two now. They arrive frozen, will last 6 months in the freezer, and come out of the oven tasting better than any apple pie you have ever baked.

Even better, the proceeds go directly to one of two new local preschools. Choose between supporting the newly opened Environmental Nature Center Preschool or St. James Episcopal Preschool, opening in 2020.

Your delicious Dutch Apple Crumb Pies will arrive frozen from the Julian Pie Company and will be available for pickup on Tuesday, November 5th, at the Environmental Nature Center between 11:30 and 12:30 pm.

## Blessing OF THE Animals!

St. James Episcopal Church is hosting the "Blessing of the Animals" on **Sunday, Oct. 6th, at 10 a.m.** Bring your pets for a special blessing. All are welcome!



The Rev. Canon Cindy Evans Voorhees  
3209 Via Lido, Newport Beach, CA 92663-3973  
949.675.0210 • [www.stjamesnewport.org](http://www.stjamesnewport.org)  
**Regular services are at 10 a.m. every Sunday**

## A Shipwrecked Holiday!



### LIDO ISLE YACHT CLUB'S ANNUAL ELECTRIC BOAT HOLIDAY CRUISE

FRIDAY, DECEMBER 13, 2019.  
BAHIA CORINTHIAN YACHT CLUB

Cost: \$65.00 for members • \$75.00 for non-members  
6:00 p.m. Cocktail Toast  
7:45 p.m. Dinner & No-Host Bar  
Dancing to the sounds of DJ "Eddie"

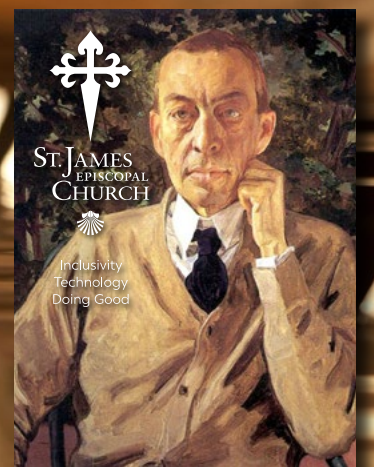
QUESTIONS? Please contact Suzanne Cardwell (206) 310-8919 • [zanes@comcast.net](mailto:zanes@comcast.net)  
Or Brian Benson at (203)355-3884 - [bbenson@cpa.com](mailto:bbenson@cpa.com)

Order your tickets online at [LIYC.net](http://LIYC.net)  
OR Please make checks payable to **LIYC**  
and deliver to:  
**Barbara Wall**  
201 Via Orvieto  
Newport Beach, CA 92663

## Sergei Rachmaninoff PIANO CONCERTO No. 3

Sunday,  
Oct. 27th  
at 5 p.m.

**\$20 suggested donation**  
**Michael Denison, pianist**  
**Daniel Resch, organist**



The Rev. Canon Cindy Evans Voorhees  
3209 Via Lido, Newport Beach, CA 92663-3973  
949.675.0210 • [www.stjamesnewport.org](http://www.stjamesnewport.org)  
**Regular services are at 10 a.m. every Sunday**

### PERSONAL INJURY

Law Offices of John Rapillo  
*Representing Injury Victims Since 1978*

2700 NEWPORT BOULEVARD, SUITE 172  
NEWPORT BEACH

(949) 675.5060 • [www.rapillolaw.com](http://www.rapillolaw.com)



*Magical Evenings*  
**DECEMBER 18-22**



On behalf of the LICA Board of Directors, we request your consideration in assisting entire community with the parking issues we all experience at times on Lido Isle.

Please be respectful and courteous to your neighbors and please park on your own property, in front of your own garage and allow your neighbors to enter and exit from their front doors and garages.

Please be patient with public parking and the many construction vehicles visiting.

When permitted, we kindly ask you to PLEASE PARK YOUR CARS IN YOUR GARAGE: The City of Newport Beach requires that your garage be available for parking at all times specifically, subsection B:  
<https://www.codepublishing.com/CA/NewportBeach/?NewportBeach20/NewportBeach2040.html#20.40.030>.

If your garage is no longer accessible for parking vehicles, please note that the City will/can follow up with a letter requesting to inspect your garage.

**PLEASE DO NOT PAINT ANY CURBS RED:** The City may issue a violation to anyone who selectively paints any portion of their curb red without City authorization. By Municipal Code, the City can authorize painting of curbs.

12.20.080 Unauthorized Painting of Curbs. No person, unless authorized by this City, shall paint any street or curb surface; provided, however, that this section shall not apply to the painting of numbers on a curb surface by a person who has complied with the provisions of any resolution or ordinance of this City pertaining thereto. (Ord. 1069 (part), 1963: 1949 Code § 3244.1)

If you should have any questions, please do not hesitate to contact Management.

Sincerely,  
Shelly O'Sullivan, CCAM  
General Manager



## YOU'RE INVITED!

Orange Coast Crew has shared Newport Harbor with Lido Island Residents for over 60 years, and we would like to invite all Lido Island Residents to our Boathouse, as a "Thank You" for all of their support over that time. May this also serve as our apology for early morning wake-ups throughout the school year!

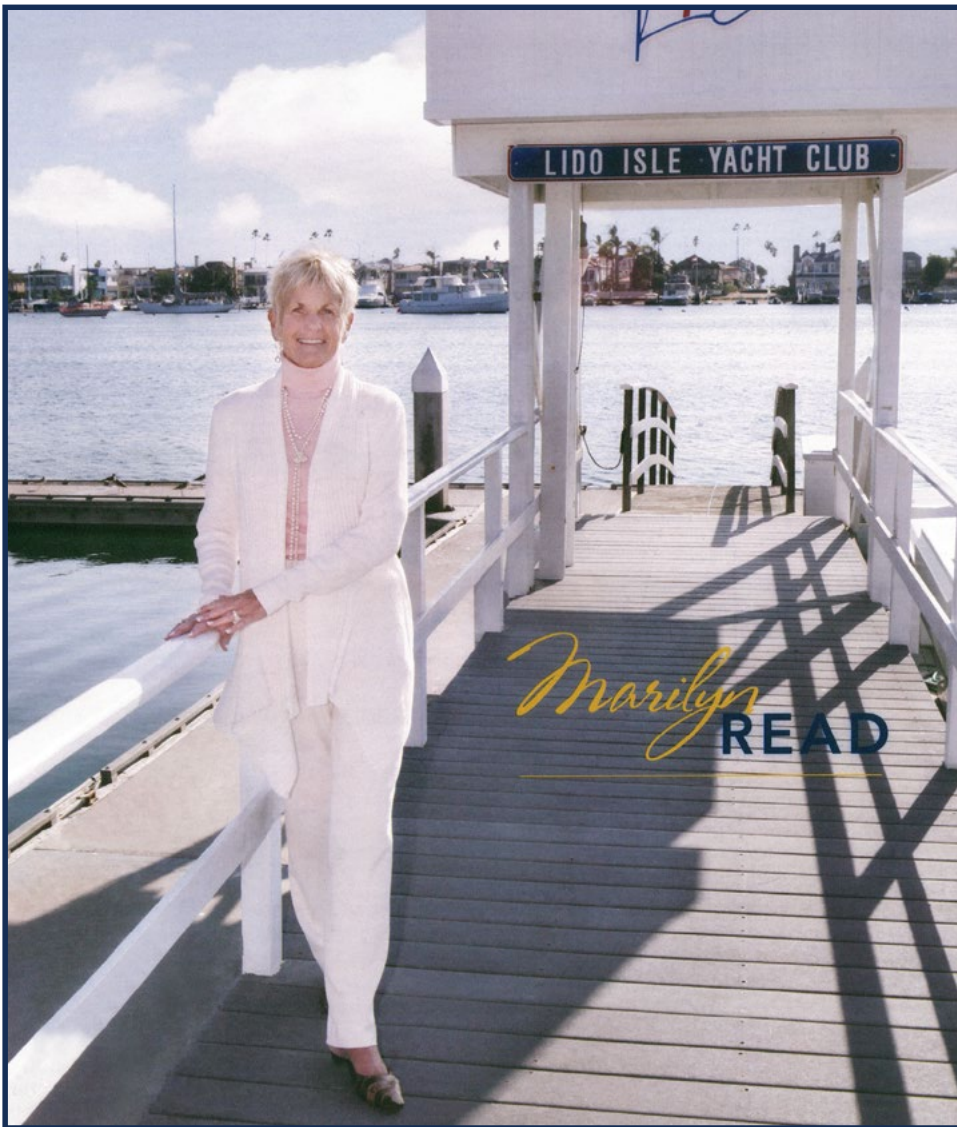
We hope all residents will join us on the evening of **Saturday, November 2nd from 4:00-6:00pm** for drinks and snacks as we express our appreciation to our neighbors. This is not a fundraising event for us. We will have a 55' ferry to meet residents at the Genoa Park Private Dock at 4:00pm to transport attendees to our boathouse directly across the Lido Channel, and return them to the dock before 6:00pm. Our oarsmen will be on hand to assist people on and off the ferry.

At our boathouse we will serve beer, wine, and hors d'oeuvres, have boats on display, as well as information on the history of our program and the impact we have had on the lives and careers of the young who have come through Coast Crew.

RSVP to Men's Crew Head Coach, Cam Brown at  
Tel: 405-761-9932  
cbrown164@occ.cccd.edu.

We hope to see you all on November 2nd.

Sincerely,  
Cameron Brown  
MEN'S HEAD CREW COACH  
ORANGE COAST COLLEGE



## LET'S WORK TOGETHER!

- 1 Rates are low and buying power has increased.
- 2 Looking to downsize, find a vacation home or exchange a property?
- 3 Need updates on new loan programs?
- 4 Incredible details – call soon.  
**949-632-2494**



MARILYN READ  
CalRE#00981786  
949.632.2494  
Marilyn.Read@camoves.com  
LidoIsleProperties.com



RESIDENTIAL BROKERAGE



## LIYC Adult Sailing Clinic Develops Outstanding Sailors

Five all day sailing clinics were held over the spring months to teach beginning and intermediate sailors the fundamentals of sailing and racing the Harbor 20 sailboats. Each Clinic was led by Champion Harbor 20 A Level sailors, and covered all facets of sailing a Harbor 20, including setting up the boat, sail shape, rigging adjustment, boat handling skills upwind and down wind, docking, dealing with tide and wind velocity, crewing, sailing around marks, starting techniques, tactics, and racing. The students achieved competency in these skills, and proved it in a very competitive series of races held at Lido on Father's Day. The races were followed by an Awards Ceremony and Father's Day tribute. Everyone raved about the fun times that we all had on the water and at the celebration that followed.

The final Clinic proved the effectiveness of the training, as five Harbor 20 boats, each with two students and a champion Mentor from Harbor 20, Fleet I, raced four races to determine which students had best mastered

the instruction. After four hotly contested races, the winners were Ralph Simmons and Burt McChesney, accompanied by mentor Bill Menninger. They were closely followed by Gary and Cindy Allen who were mentored by Peter Haynes. The winners were awarded the book "Notable Boats" in History as trophies for their accomplishments. This was followed by barbecued burgers and plenty of libations which is traditional among our sailors.

The Clinics were put on by Lido Isle Yacht Club, where the effort was led by VC Brian Benson and Administrator, Donna Kleha. They were joined by the Harbor 20 Fleet One sailors, including Bob Yates, Phil Thompson, Ed Kimball, Judy Weightman, Bill Menninger, Peter Haynes, Mark Conzelman and Gary Thorne. For more information, go to the Harbor 20 website or contact Bob Yates, Fleet Captain.





**117 - 127 VIA ANTIBES**  
Lido Isle | Offered at \$7,995,000  
Six Unit Condo Complex



**408 VIA LIDO NORD**  
Lido Isle | Offered at \$4,795,000



**207 VIA ITHACA**  
Lido Isle | Offered at \$4,695,000



**447 VIA LIDO SOUD**  
Lido Isle | Offered at \$4,695,000



**126 VIA KORON**  
Lido Isle | Offered at \$3,895,000



**204 VIA QUITO**  
Lido Isle | Offered at \$3,695,000



**648 VIA LIDO SOUD**  
Lido Isle | Offered at \$3,100,000



**219 VIA KORON | NEW LISTING**  
Lido Isle | Offered at \$2,595,000



**120 VIA QUITO**  
Lido Isle | Offered at \$2,495,000



**323 VIA LIDO SOUD | FOR LEASE**  
Lido Isle | Offered at \$17,995/month



**732 VIA LIDO NORD | SOLD IN 2019**  
Lido Isle | Represented Seller



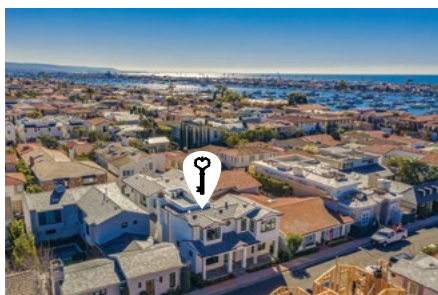
**704 VIA LIDO NORD | SOLD IN 2019**  
Lido Isle | Represented Seller



**202 VIA CORDOVA | SOLD IN 2019**  
Lido Isle | Represented Buyer



**207 VIA FIRENZE | SOLD IN 2019**  
Lido Isle | Represented Seller



**132 VIA HAVRE | SOLD IN 2019**  
Lido Isle | Represented Seller



**125 VIA MENTONE | SOLD IN 2019**  
Lido Isle | Represented Seller



**117 VIA RAVENNA | SOLD IN 2019**  
Lido Isle | Represented Seller



**441 VIA LIDO NORD | SOLD IN 2019**  
Lido Isle | Represented Seller



**433 PIAZZA LIDO | SOLD IN 2019**  
Lido Isle | Represented Seller



**805 VIA LIDO NORD | SOLD IN 2019**  
Lido Isle | Represented Seller



**JON FLAGG**  
949 698 1910  
JFLAGG@VILLAREALESTATE.COM  
JONFLAGG.COM  
DRE No. 01316048



# LIWC

LIDO ISLE WOMEN'S CLUB

October 2019

LIWC President:  
Margo Iverson



Since it is now officially Fall and your summer outdoor activities may have slowed, you may be wanting to look into participating in one of the Interest Groups featured here that are sponsored by the Lido Isle Women's Club.

## Yoga by Jan Wirgler

If you are you feeling stressed, overwhelmed and stiff, you might like to try our Lido Yoga group. We practice yoga three times a week at our Lido Clubhouse overlooking the bay. Practicing yoga will tone your muscles, help your flexibility, increases blood oxygen levels, strengthen your immune system, and reduces your levels of tension and anxiety. Using breath and movement, yoga will enhance your physical health and mental tranquility, lowering your heart rate in everything you do.

Come and try a class taught by our teacher, Robin Thomas. Realizing our individual strengths and weaknesses, she will customize your yoga practice just for you. Introducing yoga to your life may be the best gift you can give yourself, a more peaceful, flexible you.

Our yoga classes are Monday, Wednesday and Friday at 9 am

## Pilates by Sharon Wright

The best thing you can do for yourselves is to have some kind of an exercise program. Keep Moving! I've found Pilates to be a great boon to my health, and we have a good class in Matt Pilates right here on Lido. Tuesdays and Thursdays at 10:30-11:30. Deborah is a good teacher and helps us keep our bodies working. She helps us learn what is causing our aches and pains and what we can do to help ourselves. \$8.00 per class, paid when you can come. You don't have to sign up for a specific time. Just have to be a member of the LIWC. Bring a foam roller, stretch band (we use green level) not too stiff or thick. A large soft ball (approx 10") and a tennis ball or racket ball. and of course, a mat. Deborah is a Cancer Survivor herself and works with children and adults on post-cancer care, she has her own non-profit. You can start and continue on your own level and learn as you go.

## Marathon Bridge

by Barbara Wall



The ladies of Lido have been playing Marathon Bridge matches for a number of years. This group is sponsored by Lido Isle Women's Club. There are 20 teams in this club with Marathon Bridge season starting in September and ending in May. Shauna Oyler has been kind enough to organize the teams and set a schedule for who plays who each month.

The matches consist of two teams playing at one of the member's homes. Shauna also collects all our scorecards through the year and tallies up our scores after our season closes. The announcement of first, second and third place happens at our annual bridge luncheon in June at Santa Ana Country Club where we gather to play more bridge and enjoy the wonderful food. We are a social bridge club so even though we are serious about bridge the main focus is about building friendships and having fun. If you are new to Bridge or think you would like to try Bridge please let us know. The Bridge ladies love meeting new members and are willing to set up practice times to teach or just help someone get involved in the wonderful game of Bridge. You can contact me, Barbara Wall at 949-723-1274. Wishing all the Marathon Bridge players good card hands this year.

### SAVE THE DATE

# Chick Flick is Back!

OCTOBER 17th • 7pm  
San Remo Park\*

Bring your beach chair and your beverage of choice!  
Watch for flyers/email for details.

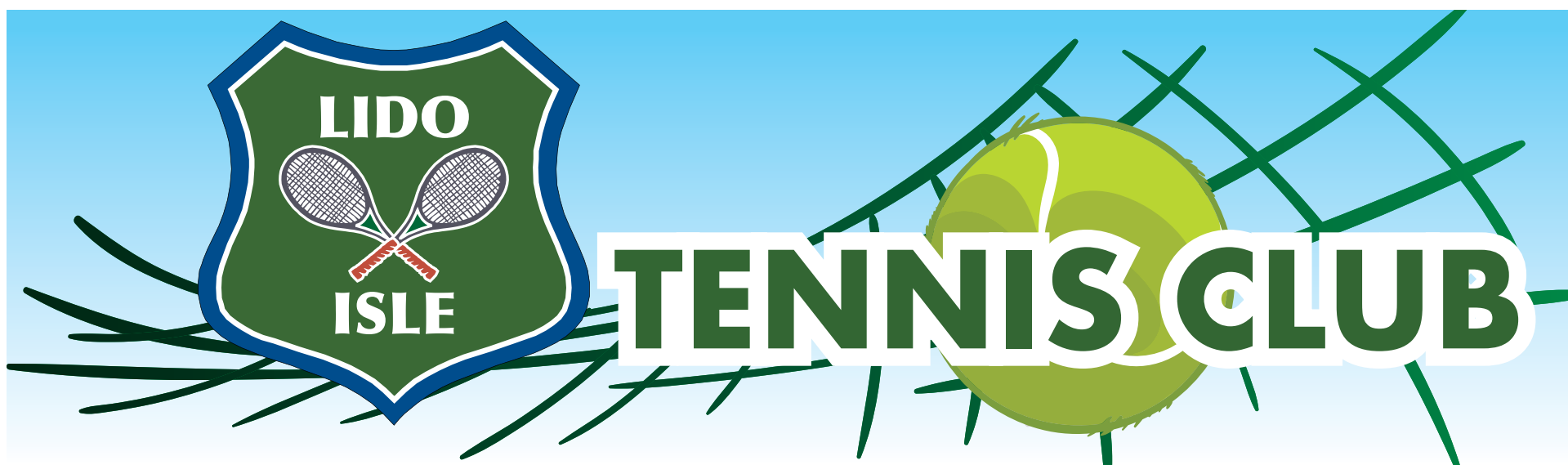
\* If the park is under construction, we will move to the beach.

## Event Calendar

Events/details are subject to change. Please watch for emails/flyers verifying details for each event.

DATE	EVENT	TIME	LOCATION
October 17 (Thurs)	Mixology Class	7:00	Clubhouse
October 27 (Sun)	Pumpkin Carving	4:00 – 6:00	TBD
November 14 (Thurs)	Paint the Night (Timree Paint Party)	TBD	Clubhouse
December 4 (Weds)	Home for the Holidays	11:00 – 3:00	Clubhouse
December 7 or 14 (Sat)	Gingerbread Houses	TBD	
December 18 (Weds)	Boat Parade Party	5:00 – 8:00	Clubhouse
January 23 ((Thurs)	PJ Bingo - PM Breakfast Re-gifting Party	Evening	Clubhouse
February 7 (Fri)	Wine & Chocolate Around the World (Couples)	Evening	Clubhouse
March 19 (Thurs)	March Madness	TBD	
April 5 (Sun)	Bunny Party	TBD	
April 18 (Sat)	Chillin' on Lido - Reggae Party	Evening	Clubhouse
May 7 (Thurs)	Chick Flick	7:00	San Remo Park
June 3 (Weds)	Installation Luncheon	TBD	
June 6 (Sat)	Saturday in the Park Concert	4:30	San Remo Park
July 4 (Sat)	Parade and Beach Party	10:30– 3:00	Clubhouse





## LITC “CLUB LIDO” ANNUAL PARTY

**Friday, November 8th**

Our annual fall party is set for Friday, November 8th at 6PM at the clubhouse which will become CLUB LIDO with cocktails and appetizers being served prior to the performance of magician Johnny Ace Palmer on the ‘main stage’. You will not want to miss this event.

Johnny is a regular at Hollywood’s Magic Castle where he won the Parlor Magician of The Year in 2017. He is also the only magician to receive both the International Brotherhood of Magicians Gold Cups Award of Excellence and the Society of American Magicians Gold Medal Award of Honor. Johnny puts on a full show that leaves everyone asking ‘how did he do that?!’

Dessert and dancing to the music of DJ KWEST Productions will end the evening at the CLUB. The Club opens at 6 p.m. and closes at 10 p.m. Attending members are asked to bring a favorite appetizer to share during the cocktail hour. Attire as always can be Lido casual, but we suggest a little Club Lido upgrade to BLACK, WHITE, and a little GLITZ...which is always appropriate at the CLUB LIDO.

The cost is \$10 to LITC members and \$25 for non-members and guests, who are encouraged to join the fun. Reservation forms will be distributed during the first of October via home delivery to members and Constant Contact to the entire island. Reservations can be made by check through Donna Martell or by Venmo through Susan Crossley.

For immediate questions call John Oyler @ 949. 673. 1212. It promises to be a great evening.

**FRIDAY, NOVEMBER 8<sup>TH</sup> → CLUBHOUSE → 6 P.M.**

**Lido Isle Tennis Club Fall Party**  
An Evening of Music and Magic

- ★ Cocktails & Appetizers at the CLUB LIDO
- ★ Entertainment by Magician JOHNNY ACE PALMER
- ★ Dancing to the Music of KWEST PRODUCTIONS

Attire: Black, White, and Glitz

→ \$10 FOR MEMBERS/\$20 AT DOOR → \$25 FOR NON MEMBERS/\$30 AT DOOR

Questions? Call John Oyler 949. 673. 1212

## SOS - “SOCIAL ON SUNDAY”

**SUNDAY, October 20th, 4-8PM**

**SAN REMO TENNIS COURT**

THE LITC NIGHT SOS series concludes on October 20th! Come down to the San Remo tennis court on Sunday, October 20TH at any time between 4pm and 8PM, enjoy the balmy weather and the always festive, SOCIAL ON SUNDAY. While you are at the court, savor some wonderful food and fine refreshments. If you have yet to participate in a LITC SOS – the time is now! There is not a better way to finish your weekend enjoying the great people and tennis players of this island. Eat, drink and socialize while participating in some mildly competitive, friendly tennis with an emphasis on fun. If you don’t wish to play in this very social format, no problem, just come out, feast away and enjoy some camaraderie with your neighbors. Simply show up at San Remo between 4 and 8pm, it’s an easy way to have a bit of fun, get some exercise, participate and battle it out on the court. Play as much or as little as you’d like. Please grab a friend or family member on the way over. The SOS is a monthly event hosted by the LITC and all members plus their guests are welcome. Doubles and mixed doubles and even some pickleball may be featured. A special thanks, once again, to Tim and Allison O’Neil for hosting the August SOS.



LITC AUGUST SOS - HOSTED BY TIM AND ALLISON O’NEIL

### TENNIS TIP:

One Two Punch- Serve out wide and follow it to the net.  
Hit the next ball into the open court for a winner!

### 2019 LITC EVENT CALENDAR

Saturday 10/6	Tennis Party	Clubhouse	6-10pm
Sunday 10/20	Night SOS	San Remo	4-8pm
Sunday 11/17	SOS	San Remo	12-4pm
Sunday 12/15	SOS	San Remo	12-4pm

### PROPER USE OF TENNIS COURTS & RECREATIONAL FACILITIES

It is extremely important that all residents are vigilant in assuring that our tennis courts, basketball courts and recreation areas are used properly. Improper use such as scooters and skateboards, have resulted in significant damage to the recently resurfaced Via Jucar tennis and adjacent sport courts. Parents may be held responsible for any damage done to the courts by their children. Please ensure that Lido’s wonderful assets are treated appropriately and report any improper use to LICA at 949 673-6170.

## PICKLEBALL ON LIDO

This is the sport, which is an offshoot of tennis, that is sweeping the nation and becoming extremely popular. The LITC now has made this great time available to you. There is a Pickleball court painted on the basketball court at Via Jucar with everything that you need (net, paddles, balls) locked in a small storage box on the on the backboard/hitting area at the Via Jucar tennis court. Contact Sid Crossley for more details—sidcrossley@gmail.com

## TENNIS LESSONS

Margie Mateljan, Robbie Reenan and Mike Lindsey are available for lessons year-round. Summer may be nearing an end but it's all-year activity on this great island and this great game. Take advantage of one of Lido's best assets, our fantastic tennis facilities and professional instructors. Tennis lessons are available with USPTA certified pro Margie Mateljan and her assistants Robbie Reenan and Mike Lindsey. The staff is available for any type of instruction you are looking for. They teach private and group lessons. Please contact Margie 949-233-5670 if you are interested. Sign you or your child up today. All levels are welcome!

## Margie's Corner

### LITC Jr. Student of the Month Rhett Rutter

Rhett Rutter is 5 years old and in kindergarten at Newport El. He enjoys going to the beach with his friends and family, skateboarding, waterskiing and of course tennis! Caboose is one of the funniest kids I teach. He knows he can make me laugh with the simplest comment. He is a good listener and his tennis has improved so much in the short amount of time he has been playing. His favorite game is dungeon. Rhett has lived on lido for 3 years and his grandparents have been on the island for 35 years.



# Halloween Extravaganza!

OCTOBER 31 4-5:30 PM

## Trick-or-treat at Newport Beach Public Library!

Central Library Children's Room  
1000 Avocado Ave. → Newport Beach

Calling all little ghouls and goblins for a fun-filled Halloween extravaganza. At the library, they'll have not-so-scary stories, Halloween crafts and yummy treats. Finish the evening with trick-or-treating around the library. Don't forget to wear your costume! Children must be accompanied by an adult. No registration required.

## Date Oatmeal Yummies

1 8oz package pitted dates	1 ½ cups quick rolled oats, uncooked
¾ cup water	1 ¼ cups sifted all-purpose flour
½ tablespoon all-purpose flour	1 teaspoon baking soda
¾ cup light brown sugar	¾ cup butter or margarine
unsweetened whipped cream, optional	

In saucepan, combine first three ingredients and 1/4 cup sugar. Bring to boil, stirring; simmer 10 minutes, or until thickened. Set aside, In medium bowl place rolled oats, flour, baking soda and remaining sugar. Cut in butter or margarine as for pie crust. Press two thirds of mixture evenly on bottom of a 9-inch square pan; spread with date mixture. Crumble remaining oatmeal mixture over dates. Bake in a preheated oven (375° F) about 30 minutes, or until top is browned. Cool, cut into squares. Serve with unsweetened whipped cream, if desired. Makes 16 squares.

Editor's Favorite

## IN ESCROW IN 10 DAYS!

15 Castaways N., Newport Beach

Bedrooms 4 | 3 Car Garage | Pool & Spa  
Offered at \$2,838,000

**BERKSHIRE HATHAWAY**  
HomeServices  
California Properties

**SHARON GRIMES** Realtor®  
Call Your Trusted Real Estate Partner  
949.466.5756  
Sharon@SharonGrimes.com  
SharonGrimes.com  
DRE 01149249

©2019 Berkshire Hathaway HomeServices California Properties (BHHS CP) is a member of the franchise system of BHH Affiliates LLC.

FROM CONCEPT TO REALITY **THE BRADSHAW RESIDENTIAL GROUP** HAS PROVEN RESULTS  
 WHETHER **REMODELING, STAGING OR MARKETING** TO GET YOU **MORE VALUE FOR YOUR HOME.**



92 SIDRA COVE | CRYSTAL COVE | BEFORE



92 SIDRA COVE | CRYSTAL COVE | AFTER



25 LANDPORT, NEWPORT BEACH | \$3,300,000 [25LANDPORT.COM](http://25LANDPORT.COM)



SINGLE LEVEL | IRVINE TERRACE \$3,995,000 [630RAMONADRIVE.COM](http://630RAMONADRIVE.COM)



**JASON C. BRADSHAW**  
 FOUNDING PARTNER | BRADSHAW RESIDENTIAL GROUP  
 CalRE# 01304396  
 949.433.3001  
[Jason@BradshawResidential.com](mailto:Jason@BradshawResidential.com)



**GLOBAL LUXURY**

**DIANA MINER**  
 SALES PARTNER | BRADSHAW RESIDENTIAL GROUP  
 CalRE# 01919429  
 949.394.6212  
[Diana@BradshawResidential.com](mailto:Diana@BradshawResidential.com)



**COLDWELL BANKER RESIDENTIAL BROKERAGE**

The property information herein is derived from various sources that may include, but not be limited to, county records and the Multiple Listing Service, and it may include approximations. Although the information is believed to be accurate, it is not warranted and you should not rely upon it without personal verification. Real estate agents affiliated with Coldwell Banker Residential Brokerage are independent contractor agents and are not employees of the Company. ©2019 Coldwell Banker Residential Brokerage. All Rights Reserved. Coldwell Banker Residential Brokerage fully supports the principles of the Fair Housing Act and the Equal Opportunity Act. Owned by a subsidiary of NRT LLC. Coldwell Banker, the Coldwell Banker Logo, Coldwell Banker Global Luxury and the Coldwell Banker Global Luxury logo service marks are registered or pending registrations owned by Coldwell Banker Real Estate LLC. (16072321)



**62 Linda Isle**  
 Sold at \$7,700,000  
 Represented Seller



**137 Via Havre**  
 Leased at \$12,500  
 Represented Leasee



**79 Blue Lagoon**  
 Leased at \$8,000  
 Represented Lessor and Leasee



**210 Via Dijon**  
 Leased at \$5,500  
 Represented Lessor

**Sharon McKinnon**  
 949.683.4016  
[sharon.mckinnon@compass.com](mailto:sharon.mckinnon@compass.com)  
 DRE 00828100

**Jamie McKinnon**  
 949.677.1021  
[jamie.mckinnon@compass.com](mailto:jamie.mckinnon@compass.com)  
 DRE 01869698



Compass is a real estate broker licensed by the State of California and abides by Equal Housing Opportunity laws. License Number 01919429. All material presented herein is intended for informational purposes only and is compiled from sources deemed reliable but has not been verified. Changes in price, condition, sale or withdrawal may be made without notice. No statement is made as to accuracy of any description. All measurements and square footages are approximate.

**COMPASS**



# Lido Isle Community Association Board of Directors' Meeting Open Session - August 14, 2019

**BOARD MEMBERS PRESENT:**

Eric Henn, President  
 Shana Conzelman, Vice President  
 Scott Obel, Treasurer  
 Marion Smith, Secretary  
 Marsha Ferrall, Director  
 Leland Iverson, Director  
 Dave Rahn, Director  
 Leslie Thompson, Director

**NOT PRESENT:**

Mike O'Shea, Director

**GRANDMANOR**

**PERSONNEL PRESENT:**

Shelly O'Sullivan, General Manager  
 Yen Tran, GrandManors, Transition  
 Caitlyn Berry, GrandManors, Transition

**Homeowners Forum**

Residents are interested in knowing what the plans are for the 12' fence at Remo Park. Residents inquiring if they can do landscape enhancements to leased Newport Beach City park next to their home.

**Secretary's Report**

June 12, 2019 Minutes

The June 12, 2019 Minutes will be included at next board meeting.

July 10, 2019 Minutes

"Be it resolved: To approve the July 10, 2019 minutes as submitted."  
 Moved, Seconded, Carried 8-0

**Managers Report**

Introduction of Shelly O'Sullivan as the new General Manager. Shelly will start on Monday, August 19, 2019.

**Treasurers Report**

Due to the management company transition, no financials to review at this time.

**New Business**

**Transfer of funds**

"Be it resolved: To bring the operating account to \$300,000 a transfer of funds from operating accounts #5351 \$77,929.10, Account #1879 \$100,000 and Account 8109 \$53,059.20."

Moved, Seconded, Carried 8-0

**Holiday Lighting Proposal**

"Be it resolved: To approve the Holiday Harbor Lighting Proposal for the entry monument median for \$3,776.79 and the Genoa Park and Clubhouse Lighting proposal with Steven Villari for \$5,250.00 with the acknowledgement that the lights will be installed by November 10, 2019 and the appropriate Insurance coverage is in place."

Moved, Seconded, Carried 8-0

**LICA Porter**

Further discussion will be held after manager meets with janitorial service.

**Directive 22**

"Be it resolved: To adopt the changes to Directive 22 and post in the islander newsletter."  
 Moved, Seconded, Carried 8-0

**Committee Reports**

**Aviation/Communications/Website/Islander**

Shana Conzelman updated the Board that Alan Guenther was chosen by Mayor Dixon to represent District one for the Aviation. Michelle Barto handles all website postings for Directives and Minutes.

**CC&RS/Directives/City Relations/Landscaping/LIWC:**

Marion Smith updated the Board that she and Eric held a meeting with Newport Beach regarding entry island maintenance. The city wants the Association to present a proposal on what they would like to have done. The clubhouse gutters are being

removed and new ones installed. The hanging wires on clubhouse wall will need to be encased alongside the gutter, not within the gutter. Painting of the wood will occur after removal of gutters and the roof will be inspected by contractor for dry rot. The City has all the official documents of the 2002 supervote to change the hedge height on the

Stradas from 42" to 60". We are waiting for the City to accept our supervote.

**Insurance/Security/Traffic Safety:**

Scott Obel updated the Board that the Insurance was renewed in June. Residents are concerned about the safety pertaining to illegal parking especially by Park West Landscapers, residential landscapers and contractor vehicles. Scott would like to add security service to the September Agenda for potential going out to bid.

**Architectural/Clubhouse/Snackbar/LITC:**

Leslie Thompson updated the Board that Directive 6 is continuing with the review process. The tennis club hours should be evaluated. The Friday night bay dining will continue from August 30th through September 27th under the direction of Jennifer Teisan.

**MCIC**

San Remo Park Project – The owners next to the park have requested to keep the 12' chain-link fence to keep privacy and balls out of yard. Removal of fence may require cutting tree roots and potentially damaging 2 trees. Dave and management will meet with structural engineer to insure fence is structurally safe.

**Marine Facilities/Erosion:**

Sabot storage on the lawn damaged LICA lawn at the boat garden. Leland will discuss options with the LIYC for new turf and/or replacing with artificial turf. The trial boat wash at Genoa West approved in June can be utilized by making a reservation through the LICA office. Leland will work with LICA on tracking detailed reservations, monitoring dock use, and reporting back to LICA.

**Presidents Report**

Eric Henn reported that he met with the City to discuss the entry North side enhancements needed and the Antibes median and Piazza Lido median. The Treasurer is working with Diversified Management for finalization of accounting.

Meeting Adjourned 8:27PM to Executive Session

The next Board meeting will be held on September 11, 2019 at 6:00 PM.

Comments or suggestions regarding Directives or Minutes should be sent to the Board Secretary—  
 Contact information is on page two of the Islander.

## DIRECTIVE UPDATES

Directive update postings will be available for 30 days on the LICA website and will be posted in the LICA office as well. The current update section will only apply when there is a pending directive update.

Go to: [www.lidoisle.org](http://www.lidoisle.org) > Member Login > LICA Forms > Directive Updates

This information is also available at [www.GrandManors.com](http://www.GrandManors.com)



**CURRENT UPDATE(S):**

**DIRECTIVE 5** – Tennis Rules have been updated and approved by the LICA Board of Directors at the September 11, 2019 meeting.

**DIRECTIVE 22** – Real Estate Signage has been updated and approved, with verbiage clarification and a second round of approval at the June 12, 2019 LICA Board of Directors meeting, an addendum map included as a courtesy for a visual and has been reposted.

## CROSS-ISLE

### Puzzle

**DOWN**

1. Chase
3. Directive
5. October
9. San Remo Park
10. Compass

**ACROSS**

2. Sail
4. Old Isle
6. Home Tour
7. CERT
8. Best Valet
11. Boat Parade
12. Lemon Drops
13. Shelly O'Sullivan
14. Duckhorn

SOLUTIONS

## Jennifer Teisan

### CATERING

Thanksgiving Dinner

Private Parties

Christmas Parties

Boat Parade Parties

Memorial Celebrations

(949) 290-2282

# OCTOBER 2019 CALENDAR OF EVENTS



2	Wednesday	LIWC Board Meeting	10:15am-12pm
3	Thursday	LITC Board Meeting	7:30am-9:30am
3	Thursday	LIJYC Sailing Committee Meeting	10am-12pm
4	Friday	LIYC Fall Sailing Program	3:30pm-6:30pm
7	Monday	LICA Architectural Meeting	4pm-6pm
9	Wednesday	LICA Board Meeting	6pm-10pm
11	Friday	LIYC Fall Sailing Program	3:30pm-6:30pm
14	Monday	LIMC Mag Monday	6pm-9pm
18	Friday	LIYC Fall Sailing Program	3:30pm-6:30pm
20	Sunday	LITC SOS	4pm-8pm
21	Monday	LICA Architectural Meeting	4pm-6pm
25	Friday	LIYC Fall Sailing Program	3:30pm-6:30pm
26	Saturday	LIYC Halloween Regatta	9am-4pm
27	Sunday	LIYC Halloween Regatta	9am-4pm
28	Monday	LICA MCIC Meeting	4pm-6pm
29	Tuesday	Town Hall Meeting w/ Diane Dixon	5:30pm-8pm

**\*\*San Remo Park Closed for Renovations estimated through April 2020\*\***

Note: Dates and times are subject to change.  
All recurring events are posted on specific club pages

*October -  
Proof that change can  
be a beautiful thing.*



**BLACKMAN LTD.**

Custom Design · Unique Gifts · Jewelry Repairs  
Rolex Watch Service · Estate Appraisals  
Hand Engraving · Bead Stringing

3388 Via Lido Newport Beach, CA Tel 949-673-9334

## SAILHOUSE



207 VIA ITHACA - LIDO ISLE | AVAILABLE | \$4,695,000

Contact us today to discover luxury with your very own Sailhouse Custom Home.

info@sailhouse.com  
949.281.6044

sailhouse.com

Sailhouse Homes, Inc.  
Lic# 1007531 - DRE#: 01199815